



17th Medical Group Goodfellow Volume II

Table of Contents

Part	Page
A. MTF Data Call	3
B. DHA TRICARE Health Plan Assessment Summary	7
C. Independent Government Network Assessment	12
D. P4I Measures	28
E. MTF Mission Brief	45
F. MTF Portfolio (Full)	55

17th MEDGRP Data Call (1 of 4)

Mission Readiness

MTF Name	MTF DMIS ID	Assigned Deployable Capability	Officer	Enlisted	ARC	Civ
GAFB/17 MDG/Ross Clinic	0364	9AFS2 - SGT FIRST SERGEANT* (enlisted)	0	1	0	0
GAFB/17 MDG/Ross Clinic	0364	FFBH5 - BEHAV HLTH RAPID RESP ENL (enlisted)	0	2	0	0
GAFB/17 MDG/Ross Clinic	0364	FFFPS - ERPSS – 50 (officer)	1	0	0	0

Medical Hold

# Medical hold beds	Line or medical funded?	How do you execute medical hold?	What is your definition of medical hold?
None. OP care provided to/coordinated for students residing in dorms while in SOTS	N/A	Coordinate Outpatient Care. No housing challenges noted.	Students Out of Training Status (SOTS)

17th MEDGRP Data Call (2 of 4)

Installation

Installation Name	MTF DMIS ID	Affiliated Location Name	Affiliated Location DMIS ID	Installation Mission	Medical Units assigned to mission
Goodfellow AFB	0364	17 MDG	0364	Aircraft Mishap Response	17 MDOS
Goodfellow AFB	0364	17 MDG	0364	Base Fire EMS (pgrm to be rolled out w/in months)	17 MDOS w/ SGP as Medical Director
Goodfellow AFB	0364	17 MDG	0364	Warrior Ancillary Specialized Trng Program (WASP)	17 MDOS
Goodfellow AFB	0364	17 MDG	0364	Installation Occ/Env Health Prgm	17 MDG
Goodfellow AFB	0364	17 MDG	0364	Food Safety Program	17 MDG
Goodfellow AFB	0364	17 MDG	0364	PAD Program	17 MDG
Goodfellow AFB	0364	17 MDG	0364	Pandemic (DCP) EX w/ installation & civ. entities	17 MDG
Goodfellow AFB	0364	17 MDG	0364	Active Shooter EX w/ insciv. entities & "LifeLight" helicopter	17 MDG
Goodfellow AFB	0364	17 MDG	0364	Angelo State University Field Trng EX	17 MDG

17thMEDGRP Data Call (3 of 4)

Line Mission Elements

Line Units Served	Unit Mission	Personnel Assigned		
		Officer	Enlisted	CIV
17 th Training Wing and Staff Agencies	Train, develop and inspire ISR and Fire Protection Pros	18	37	42
344 Mil Intel Battalion	Train signals intel soldiers in x4 MOSs	5	500	0
Ctr for Warfare Trng Det.	Develops Naval info force sailors	2	50	0
Marine Corps Det	Trains signals intel and fire/rescue Marines	5	365	0
Coast Guard Det.	N/A	1	10	0
17 th Training Group	Trains Fire Protection and ISR Warriors	3	6	17
17 TSS	Provides Training Support	4	45	98
312 TRS	Trains DoD's Fire Emerg. & Scientific Apps Specialists	3	228	37
313 TRS	Trains ISR warriors for DoD & int'l partners	9	32	1
315 TRS	Trains ISR warriors	293	482	31
316 TRS	Trains ISR Crypto warriors	6	600	27
517th Training Group	Trains linguists in 24 dif. Languages; integ'd w/ DLIFLC	13	22	14
311 TRS	Trains basic & advanced foreign languages	59	752	0
314 TRS	Trains crypto linguists	21	655	1
17th Mission Support Group	Provides installation support	2	1	3
17 CES	Provides installation support	3	7	147
17 CMNS	Provides installation support	4	124	18
17 CONS	Provides installation support	5	31	22
17 FSS	Provides installation support	2	41	67
17 LRS	Provides installation support	1	4	46
17 SFS	Provides installation support	2	97	26

17thMEDGRP Data Call (4 of 4)

Exceptional Family Member Program Summary Report

Cases Summary

MTF Medical Specialties Supporting EMF	Network Specialties Supporting EMF	Number of EFM Supported*
Family Practice		123
Pediatrics		185
	Pediatrics	
	Pediatrics-Psych	
	Pediatrics-Developmental	
	Physical Therapy	
	Occupational Therapy	
	Speech Therapy	
	Applied Behavior Analysis (ABA)	
	Neurology	
	Cardiology	
	Allergy	

*

- Reflects count of active cases, i.e. permanent population. GAFB features a joint training environment and hosts students, as well as permanent party members, from all services. However, we are only notified of AF dependents in EFMP program and we are uninformed about/unaware of sister services dependents' EFMP needs and/or clearances and whether they even receive the medical care they need. We are pursuing a standardized/uniform Family Member Transition Screening (FMTS) process for all and we anticipate receiving DHA's approval within ~2 months.
- Add'l workload in EFMP realm consists of Family Member Relocation Clearances (FMRCs) and related Facility Determination Inquiries (FDIs) that add up to another ~300 cases/yr in addition to the ones listed above.
- Regarding Network Specialties supporting EMF, there is currently no mechanism to query & track referrals for EFMP PT population although an HER flag was implemented beg. CY19(?) and there ought to be more data avail. moving forward

Information Briefing Network Capabilities 17th Med Grp - Goodfellow

31 May 2019



"Medically Ready Force...Ready Medical Force"

Problem Statement



Request by NDAA 703 Workgroup to provide an assessment of the capability of the purchased care network to absorb clinic workload and enrollment currently being provided at **17th Med Grp - Goodfellow, TX.**

"Medically Ready Force...Ready Medical Force"

Methodology Overview



- Using M2/DHA Portfolios workload data, THP quantifies MTF capabilities /capacity/enrollment projected to shift to Purchased Sector Care (PSC) Market
 - Specialty care is defined as a 60-minute drive from physical address to specialist location. Assuming most beneficiaries live on post that are enrolled to the MTF, the network assessments will use 40 miles (urban) and 55 miles (rural) to approximate drive-time.
 - Primary care is defined as a 30-minute drive from physical address to address of PCM location. Assuming most beneficiaries live on post that are enrolled to the MTF, the network assessments will use 15 miles (urban) and 30 miles (rural) to approximate drive-time. PCPs generally have relatively full panels. Assuming the MCSC could contract 50% of the community non-network PCMs within the respective mile radius, an additional empanelment per provider is calculated.
- Utilizing workload data provided by THP, MCSC identifies/quantifies current PSC capabilities/capacity to absorb MTF workload
- THP summarizes ability of PSC to meet the new demand for services projected to shift from the MTF to PSC

Specialty Legend:

- **Green:** No anticipated problems meeting workload with ATC standards.
- **Yellow:** Current or Potential for increased appointment wait time and/or drive time.
- **Red:** Anticipate exceeding appointment wait time and/or drive time standards.

Primary Care Legend:

- **Green:** Up to 2.5% more enrollees (<49) easily
- **Yellow:** 2.5% - 5% (50-99) with moderate difficulty
- **Red:** > 5% (100+) with great difficulty

“Medically Ready Force...Ready Medical Force”

PSC Assessment

17th Med Grp – Goodfellow PSA

Civilian Network Capabilities



MCSC ASSESSMENT OF CIVILIAN NETWORK CAPABILITIES

- **Primary Care:** Current capabilities: (**green**). Capabilities with absorbed workload: (**red**)
- **Mental Health:** Current capabilities: (**yellow**). Capabilities with absorbed workload: (**yellow**)
- **Psychiatry:** Current capabilities: (**yellow**). Capabilities with absorbed workload: (**yellow**)
- **OB/GYN:** Current capabilities: (**green**). Capabilities with absorbed workload: (**green**)

Considerations:

- Within a 15-mile radius of 17th Med Grp – Goodfellow, 37 TRICARE Primary Care Managers (PCMs) are currently accepting new patients, each PCM would have to empanel 103 beneficiaries. There are no additional providers in this location to contract.
- There are 57 network facilities within drive time of 17th Med Grp – Goodfellow that offer like services currently provided by the MTF with more than adequate access to care.
- There are four urgent care centers within 25 miles of the 17th Med Grp – Goodfellow.
- When shifting workload to the network, a phased approach should be developed.
- Even though there are an adequate number of providers contracted, access to care is over 28 days for Psychiatry/Psychology.
- Case managed enrollees should have a warm hand-off to the MCSC.

“Medically Ready Force...Ready Medical Force”

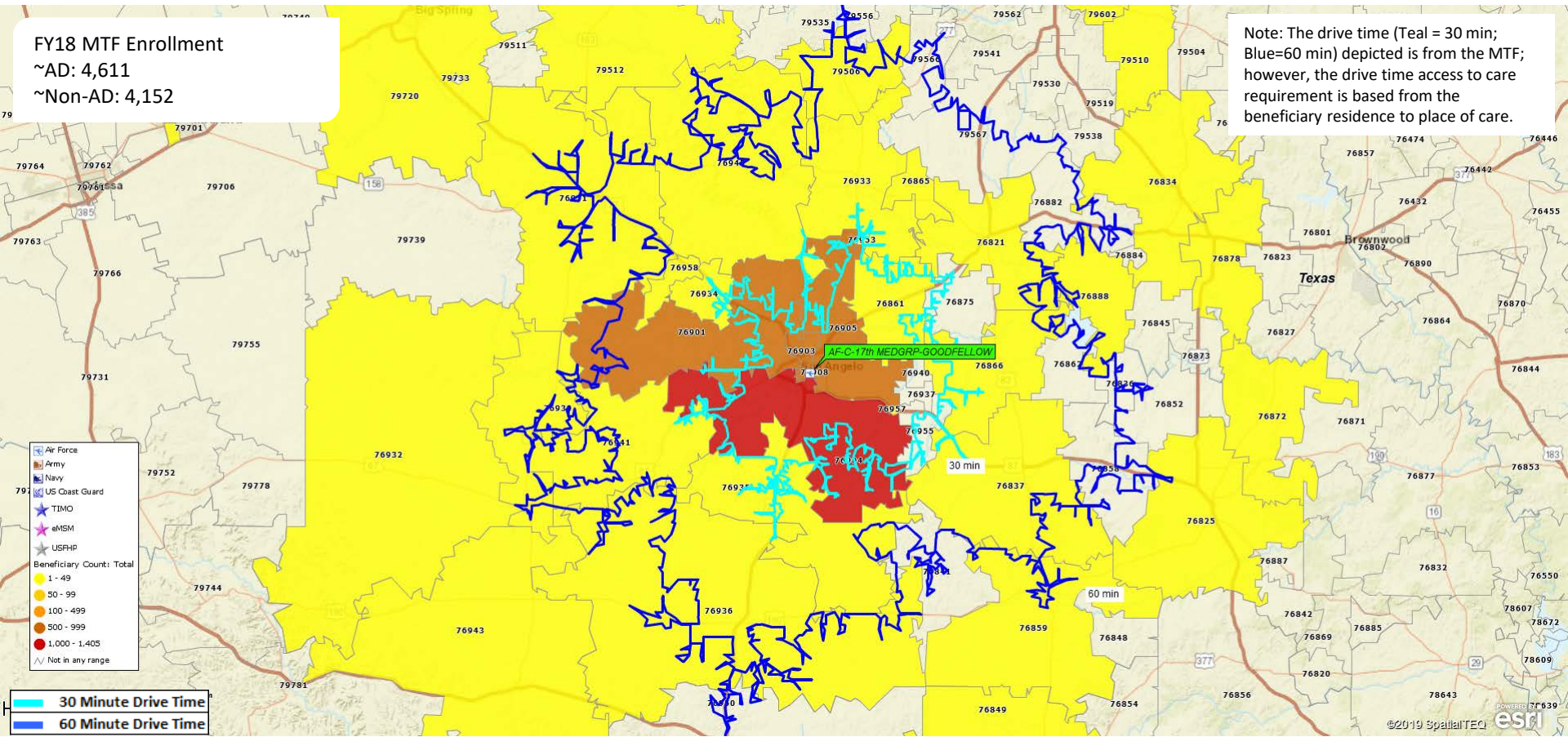
17th Med Grp - Goodfellow

TRICARE Non-ADSM MTF Enrollees



FY18 MTF Enrollment
 ~AD: 4,611
 ~Non-AD: 4,152

Note: The drive time (Teal = 30 min; Blue=60 min) depicted is from the MTF; however, the drive time access to care requirement is based from the beneficiary residence to place of care.





MHS Section 703 Workgroup

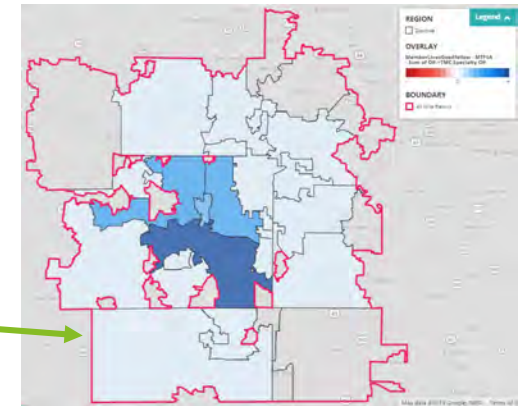
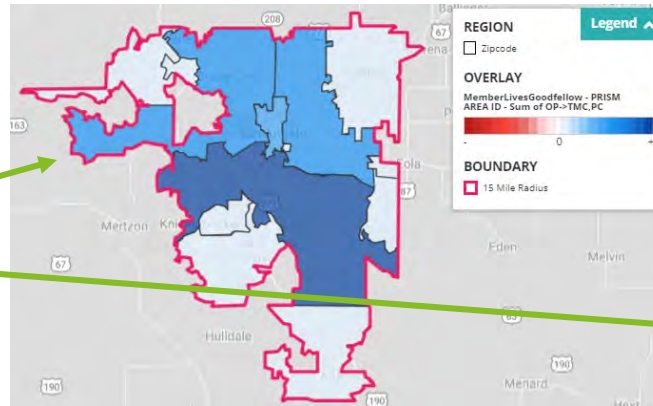
Goodfellow Network Assessment

Discussion

26 April 2019

Network Assessment: Goodfellow (1 of 2)

Scenario: AF-C-17th MEDGRP-GOODFELLOW is an outpatient facility being evaluated for conversion to a Service Member and Occupational Health Clinic



Shading is based on population within the zip code and map scale

- 100% of non-AD MTF Prime & Plus beneficiaries are living within the 30-minute drive-time boundary for Primary Care, concentrated around the MTF location

- 98% of MTF Prime, Reliant & Medicare Eligible beneficiaries are living within the 60-minute drive-time boundary for Specialty Care, concentrated around the MTF location

Primary Care Beneficiary Category	Within 30-min	Within 60-min	Outside 60-min*
Non-AD MTF Prime ¹	3,804	1	0
Plus	151	0	0
Total	3,955	1	0

1: Includes 30 Medicare Eligible MTF Prime beneficiaries

Specialty OP Beneficiary Category	Within 30-min	Within 60-min	Outside 60-min*
MTF Prime ²	6,949	70	0
Reliant	199	0	0
Medicare Eligible	1,541	92	0
Total	8,689	162	0

2: Includes 34 Medicare Eligible MTF Prime beneficiaries

Impacted Beneficiaries:

Specialty OP (if applicable): MTF Prime + Reliant + Medicare Eligible (OP Workload) (MTF Service Area ID)

PC: Non-AD MTF Prime + Plus (PRISM Area ID)

Note: To estimate the geographic market within a 30-minute drive time of the MTF, an average driving speed of 30 MPH was assumed, and thus a 15-mile radius around the zip code of the MTF was determined as the geographic market

* The 7 member lives outside the 30-minute drive time are attributed to zip code 36100 in the MHS Beneficiary Data, which does not exist, and were thus removed from the analysis

Network Assessment: Goodfellow (2 of 2)

The potential impact of new MHS Beneficiaries on the total population is well below the 10% threshold for both population groups and thus will not materially impact supply and demand of services in the market

Age Group	MHS Impacted Population	% of Total MHS Impacted Population	Population Total	% of Population Total	Impacted Population Introduced
0 to 4	556	14.1%	7,873	6.6%	7.1%
5 to 14	891	22.5%	14,626	12.2%	6.1%
15 to 17	168	4.3%	4,115	3.4%	4.1%
18 to 24	349	8.8%	15,844	13.2%	2.2%
25 to 34	475	12.0%	16,763	14.0%	2.8%
35 to 44	359	9.1%	12,116	10.1%	3.0%
45 to 64	1,006	25.4%	28,674	23.9%	3.5%
65 and over	152	3.8%	19,800	16.5%	0.8%
Total	3,956	100.0%	119,811	100.0%	3.3%

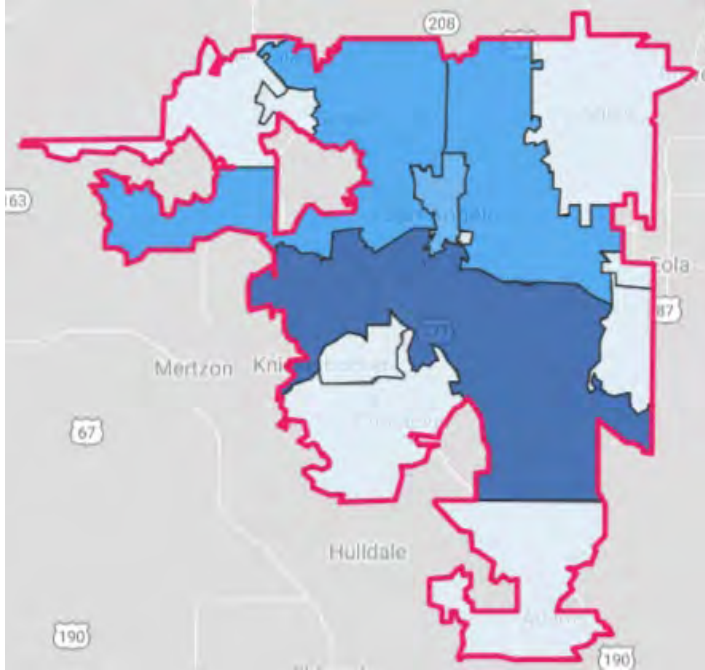
Primary Care:
Non-AD MTF
Prime, and Plus
Population

Age Group	MHS Impacted Population	% of Total MHS Impacted Population	Population Total	% of Population Total	Impacted Population Introduced
0 to 4	561	6.3%	9,236	6.5%	6.1%
5 to 14	911	10.3%	17,464	12.3%	5.2%
15 to 17	180	2.0%	4,973	3.5%	3.6%
18 to 24	2,212	25.0%	17,266	12.2%	12.8%
25 to 34	1,536	17.4%	19,046	13.4%	8.1%
35 to 44	721	8.1%	14,378	10.1%	5.0%
45 to 64	1,131	12.8%	34,746	24.5%	3.3%
65 and over	1,599	18.1%	24,862	17.5%	6.4%
Total	8,851	100.0%	141,971	100.0%	6.2%

Specialty OP:
MTF Prime,
Reliant, and
Medicare Eligible
Population

Goodfellow: Network Adequacy Analysis (1 of 4)

Primary Care



Key

- = 15-mile (30-minute) boundary
- = Density of beneficiaries by zip code

- The above geography represents a 15-mile radius, which was used due to this geography being an **urban area**
- The identified drive time **includes 17 zip codes and four partial counties** (*Runnels, Tom Green, Irion, and Schleicher*)
- **Of the 3,956 impacted primary care beneficiaries** attributed to Goodfellow, **100% are represented within the 15-mile radius boundary around the MTF**

Specialty	Number of Practice Sites	Number of Physicians
Family Practice	4	6
General Practice	1	1
Internal Medicine	10	18
Pediatrics	1	8
Grand Total	16	33

Goodfellow: Network Adequacy Analysis (2 of 4)

The **commercial primary care network** within the 30-minute drive-time standard **should be capable** of accepting the specific demand from the **3,956** impacted beneficiaries

Supply
Low High

Specialty Rollup	Specialty	Total	Irion	Runnels	Schleicher	Tom Green*
Primary Care	General/Family Practice	53	0	6	3	44
Primary Care	Internal Medicine	37	0	0	0	37
Primary Care	Pediatrics	20	0	0	0	20

Current Supply (Not Limited to TRICARE)

- The majority of primary care providers are located in Tom Green County, where ~100% of impacted beneficiaries reside, and the MTF is located

Demand
Low High

Specialty Rollup	Specialty	Total	Irion	Runnels	Schleicher	Tom Green*
Primary Care	General/Family Practice	56	1	4	1	50
Primary Care	Internal Medicine	41	1	3	1	36
Primary Care	Pediatrics	22	0	2	0	20

Forecasted Demand

- Population growth has averaged 7.5% over the last five years (2014 to 2018), but it is projected to only grow 2.3% over the next five years
- Impacted beneficiaries account for 3.3% of the population, and should not drastically affect demand

Shortage High Low Surplus Low High

Specialty Rollup	Specialty	Total	Irion	Runnels	Schleicher	Tom Green*
Primary Care	General/Family Practice	(3)	(1)	2	2	(6)
Primary Care	Internal Medicine	(4)	(1)	(3)	(1)	1
Primary Care	Pediatrics	(2)	0	(2)	0	0

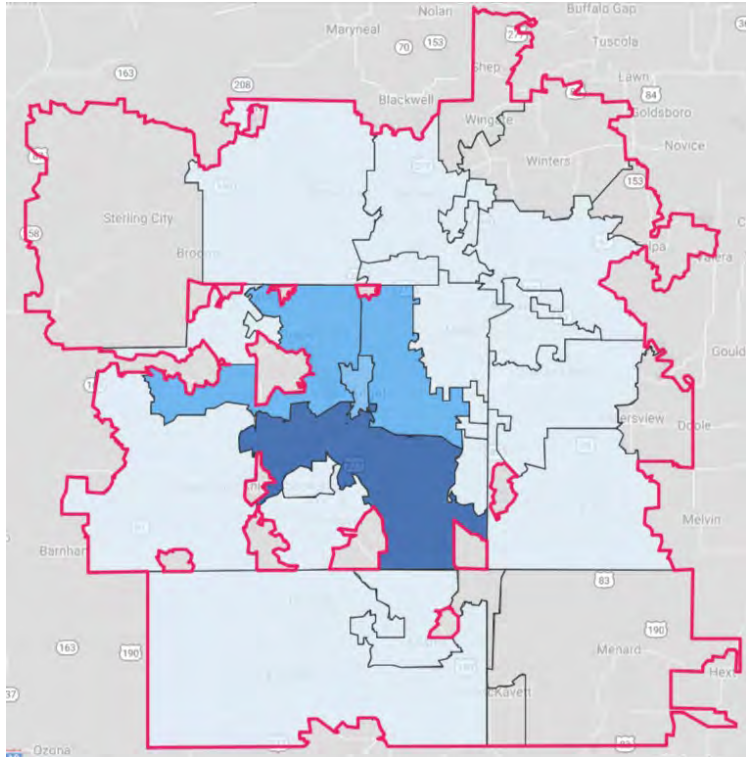
Resulting Shortage/Surplus

- There is a slight shortage of PCPs within the drive time radius across all Primary Care specialties
- However, given the slight shortage and small percent of impacted beneficiaries relative to overall population, **the network should be may be capable of absorbing incremental demand from impacted beneficiaries, however, network should be monitored over time to ensure adequacy**

*County in which MTF is located

Goodfellow: Network Adequacy Analysis (3 of 4)

Specialty Care



Key

- = 40-mile (60-minute) boundary
- = Density of beneficiaries by zip code

- The above geography represents a 40-mile radius, which was used due to this geography being an **urban area**
- The identified drive time **includes 36 zip codes, and 10 partial counties** (*Taylor, Coleman, Runnels, Coke, Sterling, Concho, Tom Green, Irion, Schleicher, Menard*)
- **Of the 8,851 impacted Specialty care beneficiaries** attributed to Goodfellow, **100% are represented within the 40-mile radius boundary around the MTF**

Specialty	Number of Practice Sites	Number of Physicians
Obstetrics/Gynecology	3	2
Psychiatric	3	3
Grand Total	6	5

Goodfellow: Network Adequacy Analysis (4 of 4)

The **commercial specialty care network** within the **60-minute drive-time** standard **may not be capable** of accepting the specific demand from the **8,851** impacted beneficiaries in Psychiatry, however, **should be capable of accepting** Obstetric/Gynecology demand

Supply
Low High

Specialty Rollup	Specialty	Total	Coke	Coleman	Concho	Irion	Menard	Runnels	Schleicher	Sterling	Taylor	Tom Green*
Medical Specialist	Psychiatry	19	0	0	0	0	0	0	0	0	8	11
Surgical Specialist	Obstetrics/Gynecology	41	0	0	0	0	0	0	0	0	21	20

Current Supply (Not Limited to TRICARE)

- The majority of primary care providers are located in Tom Green, where ~98% of impacted beneficiaries reside and where the MTF is located

Demand
Low High

Specialty Rollup	Specialty	Total	Coke	Coleman	Concho	Irion	Menard	Runnels	Schleicher	Sterling	Taylor	Tom Green*
Medical Specialist	Psychiatry	45	0	1	0	0	0	1	0	0	25	18
Surgical Specialist	Obstetrics/Gynecology	34	0	1	0	0	0	1	0	0	18	14

Forecasted Demand

- Population growth has averaged 5.3% over the last five years (2014 to 2018), but it is projected to only grow 2.1% over the next five years
- Impacted beneficiaries account for 6.2% of the population, and should not drastically affect demand

Shortage High Low Surplus Low High

Specialty Rollup	Specialty	Total	Coke	Coleman	Concho	Irion	Menard	Runnels	Schleicher	Sterling	Taylor	Tom Green*
Medical Specialist	Psychiatry	(26)	0	(1)	0	0	0	(1)	0	0	(17)	(7)
Surgical Specialist	Obstetrics/Gynecology	7	0	(1)	0	0	0	(1)	0	0	3	6

Resulting Shortage/Surplus

- An overall shortage of psychiatry providers is projected in the market area, however a slight surplus of OB/GYN providers is projected in the market area
- The Psychiatry market may be not capable of accepting the incremental demand of impacted TRICARE beneficiaries, however the OB/GYN market should be capable of accepting the incremental demand**

*County in which MTF is located

Goodfellow: Targeted Practice Profiles (1 of 5)

Based on the number of primary care practices accepting TRICARE or other government-sponsored insurance and offering extended hours of care, a large number of providers should meet MHS access standards

Primary Care Practice Profiles

Practice Site Size	Number of Practice Sites	Average Physicians per Site
Small (1-4)	14	1.4
Medium (5-9)	1	8.0
Large (10+)	1	12.0
Grand Total	16	3.0

Practice Name	Monthly Extended Hours
Shannon Medical Center Hospitalists	105.0
Shannon Clinic Urgent Care West	15.0
John D Hunt MD	3.0
Grand Total	123.0

Health System Alignment	Number of Practice Sites	Number of Physicians
Other	8	30
(Aligned to Multiple Health Systems)	6	1
Community Health Systems, Inc	2	2
Grand Total	16	33

Hospital Alignment	Number of Practice Sites	Number of Physicians
Shannon Medical Center	6	27
(Aligned to Multiple Hospitals)	3	3
San Angelo Community Medical Center	5	2
Baptist Retirement Community	1	1
Heart Of Texas Memorial Hospital	1	
Grand Total	16	33

Practices without a physician count have either opted to not participate in data.medicare.gov or have declined not to answer survey questions

Goodfellow: Targeted Practice Profiles (2 of 5)

Based on the number of Obstetrics/Gynecology Practice accepting TRICARE or other government-sponsored insurance, only a few providers should meet MHS access standards

Obstetrics/Gynecology Practice Profiles

Practice Site Size	Number of Practice Sites	Average Physicians per Site
Small (1-4)	3	1.0
Grand Total	3	1.0

Practice Name	Monthly Extended Hours
Shannon Clinic Pediatrics & OBGYN	0.0
Regional Employee Assistance Program Inc.	0.0
Shannon Medical Center Obstetric & Gynecology	0.0
Grand Total	0.0

Health System Alignment	Number of Practice Sites	Number of Physicians
Other	2	2
(Aligned to Multiple Health Systems)	1	
Grand Total	3	2

Hospital Alignment	Number of Practice Sites	Number of Physicians
(Aligned to Multiple Hospitals)	1	1
Shannon Medical Center	1	1
San Angelo Community Medical Center	1	
Grand Total	3	2

Practices without a physician count have either opted to not participate in data.medicare.gov or have declined not to answer survey questions

Goodfellow: Targeted Practice Profiles (3 of 5)

Based on the number of Psychiatry practices accepting TRICARE or other government-sponsored insurance and offering extended hours of care, only a few providers should meet MHS access standards

Psychiatry Practice Profiles

Practice Site Size	Number of Practice Sites	Average Physicians per Site
Small (1-4)	3	1.5
Grand Total	3	1.5

Practice Name	Monthly Extended Hours
River Crest Hospital Psychiatry	105.0
Shannon Clinic	
John H Snuggs MD	0.0
Grand Total	105.0

Health System Alignment	Number of Practice Sites	Number of Physicians
(Aligned to Multiple Health Systems)	2	1
Universal Health Services, Inc	1	2
Grand Total	3	3

Hospital Alignment	Number of Practice Sites	Number of Physicians
San Angelo Community Medical Center	1	2
(Aligned to Multiple Hospitals)	1	1
Shannon Medical Center	1	
Grand Total	3	3

Practices without a physician count have either opted to not participate in data.medicare.gov or have declined not to answer survey questions

While ability and willingness to accept TRICARE patients must be confirmed, the vast majority of providers in the Goodfellow market are accepting government-sponsored insurance, and many are already contracted to provide services to TRICARE beneficiaries

Primary Care Providers

Likelihood of offering services to TRICARE members	Number of Practice Sites	Number of Physicians
Contracted with TRICARE	13	31
High Likelihood*	1	
Medium Likelihood	1	1
Low Likelihood	1	1
Grand Total	16	33

Contracted Practice Sample	Specialty
Shannon Medical Center Hospitalists	Internal Medicine
Shannon Clinic - Pediatrics	Pediatrics
Shannon Clinic	Family Practice
Shannon Clinic Urgent Care West	Family Practice
John D Hunt MD	Internal Medicine
Shannon Clinic Adult & Senior Health	Family Practice
Shannon Clinic Internal Medicine	Internal Medicine
Regional Employee Assistance Program, Inc.	Family Practice
Cardiology Associates Of West Texas	Internal Medicine
River Crest Hospital, Inc.	Internal Medicine

Currently Contracted - The provider organization has a history of submitting In-Network claims to TRICARE
High Likelihood* - The provider organization has a history of submitting Out-of-Network claims to TRICARE
Medium Likelihood - Providers are accepting Medicare and/or Medicaid
Low Likelihood - The provider organization has a history of not accepting Government Sponsored Health Plan patients

*Note: The current TPA providing claims processing services for the TRICARE FOR LIFE beneficiary designation do not provide an “In-Network” designation during the claims process. These provider claims are marked as Out-of-Network by default

While ability and willingness to accept TRICARE patients must be confirmed, the vast majority of providers in the Goodfellow market are accepting government-sponsored insurance, and many are already contracted to provide services to TRICARE beneficiaries

Obstetrics/Gynecology Care Providers

Likelihood of offering services to TRICARE members	Number of Practice Sites	Number of Physicians
Contracted with TRICARE	3	2
Grand Total	3	2

Psychiatric Care Providers

Likelihood of offering services to TRICARE members	Number of Practice Sites	Number of Physicians
Contracted with TRICARE	2	2
Medium Likelihood	1	1
Grand Total	3	3

Contracted Practice Sample	Specialty
River Crest Hospital Psychiatry	Psychiatric
Shannon Medical Center Obstetric & Gynecology	Obstetrics/Gynecology
Shannon Clinic Pediatrics & OBGYN	Obstetrics/Gynecology
Regional Employee Assistance Program, Inc.	Obstetrics/Gynecology
Shannon Clinic	Psychiatric

Currently Contracted - The provider organization has a history of submitting In-Network claims to TRICARE
High Likelihood* - The provider organization has a history of submitting Out-of-Network claims to TRICARE
Medium Likelihood - Providers are accepting Medicare and/or Medicaid
Low Likelihood - The provider organization has a history of not accepting Government Sponsored Health Plan patients

*Note: The current TPA providing claims processing services for the TRICARE FOR LIFE beneficiary designation do not provide an "In-Network" designation during the claims process. These provider claims are marked as Out-of-Network by default

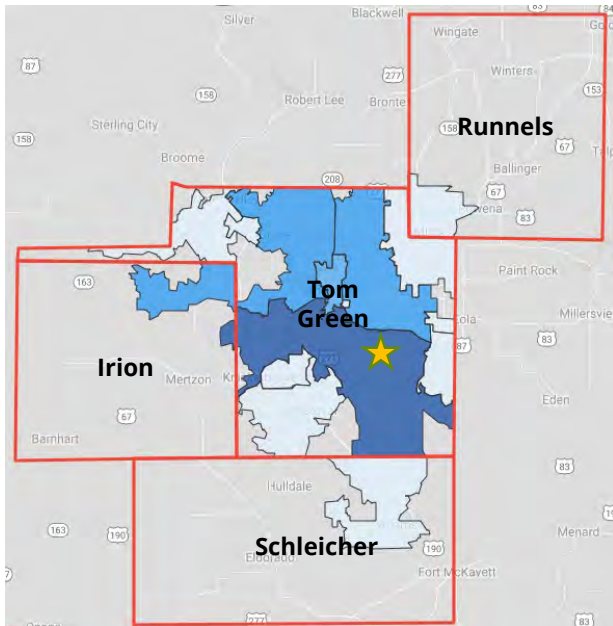
Appendix A

1. Alternate Slides

Network Assessment: Goodfellow

The table below breaks out the potentially impacted TRICARE beneficiaries by county of residence that could potentially be impacted by facility closure

County	Texas					
	Coke	Concho	Irion	Runnels	Schleicher	Tom Green
Primary Care (Non-AD MTF Prime, Plus)	0	0	0	0	0	3,956
	0%	0%	0%	0%	0%	100%
Specialty OP (MTF Prime, Reliant, Medicare Eligible)	39	23	19	95	17	8,658
	0%	0%	0%	1%	0%	98%



Primary Geography for Evaluation:

Primary Care Services:

- Tom Green

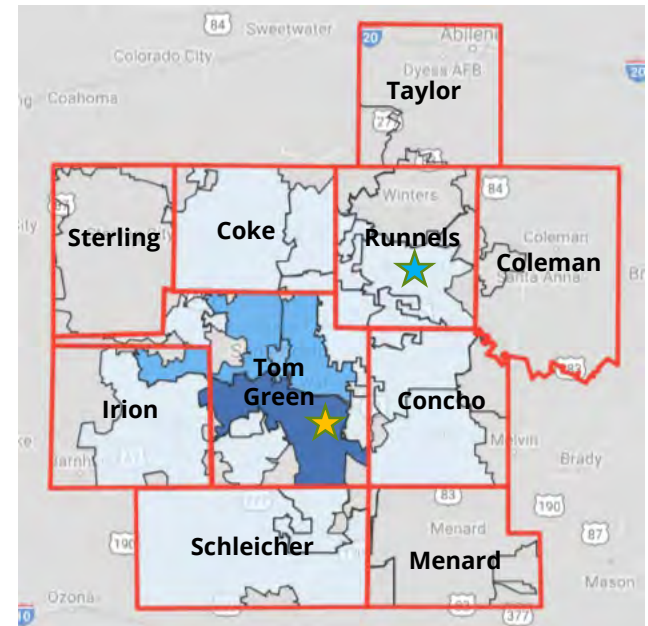
Specialty Care Services:

- N/A

Secondary Geography for Evaluation:

Specialty Care Services:

- Runnels



Drive time boundary is the county that encompasses zip codes within drive time radius from MTF



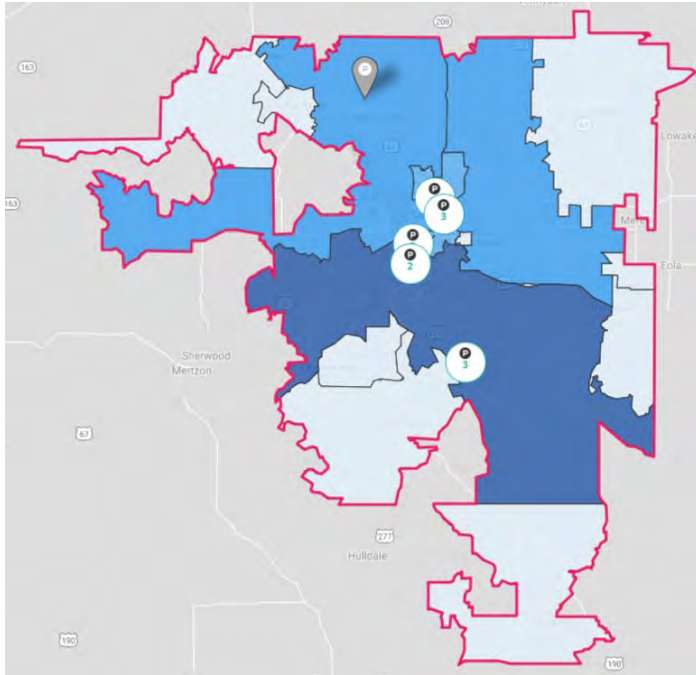
Primary Network Adequacy Evaluation



Secondary Network Adequacy Evaluation

Goodfellow: Network Adequacy Analysis (1 of 4)

Primary Care



Key

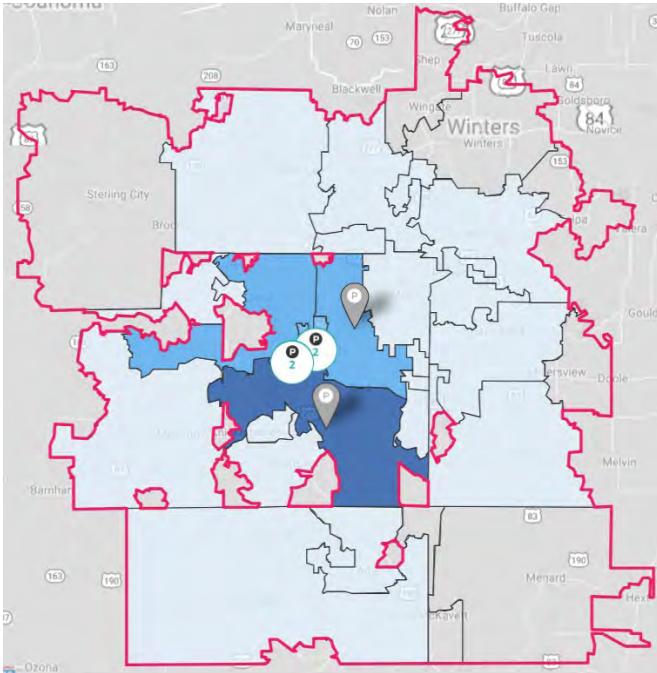
- = 15-mile (30-minute) boundary
- = Density of beneficiaries by zip code

- The above geography represents a 15-mile radius, which was used due to this geography being an **urban area**
- The identified drive time **includes 17 zip codes and four partial counties** (*Runnels, Tom Green, Irion, and Schleicher*)
- **Of the 3,956 impacted primary care beneficiaries** attributed to Goodfellow, **100% are represented within the 15-mile radius boundary around the MTF**

Specialty	Number of Practice Sites	Number of Physicians
Family Practice	4	6
General Practice	1	1
Internal Medicine	10	18
Pediatrics	1	8
Grand Total	16	33

Goodfellow: Network Adequacy Analysis (3 of 4)

Specialty Care



Key

- = 40-mile (60-minute) boundary
- = Density of beneficiaries by zip code

- The above geography represents a 40-mile radius, which was used due to this geography being an **urban area**
- The identified drive time **includes 36 zip codes and 10 partial counties** (*Taylor, Coleman, Runnels, Coke, Sterling, Concho, Tom Green, Irion, Schleicher, Menard*)
- **Of the 8,851 impacted Specialty care beneficiaries** attributed to Goodfellow, **100% are represented within the 40-mile radius boundary around the MTF**

Specialty	Number of Practice Sites	Number of Physicians
Obstetrics/Gynecology	3	2
Psychiatric	3	3
Grand Total	6	5

P4I Measures (1 of 17)

MHS Dashboard - AF-C-17th MEDGRP-GOODFELLOW



Filter

- All
- CI
- PMIS
- TRM
- MY

Export

- PDF
- Excel
- Word
- Grid

View as of

Apply Clear

Layout

- Menu
- Grid
- Home

Go back to: [MHS](#) > [AETC](#)

Readiness- **Medically** Ready Force

Individual Medical Readiness
(IMR)

Current Data Date

Freq of Update

Quarterly



Deployment Limiting Med/Dent Condition to fit

Click documentation Icon for measure details



Percent of Providers Meeting KSAs for General Surgery

Click documentation Icon for measure details



Percent of Providers Meeting KSAs for Orthopedic Surgery

Click documentation Icon for measure details



P4I Measures (2 of 17)

Better Health- **Improve** Well-Being

Health Related
Quality of Life

Current Data Date

Freq of Update

Annually

Obesity Prevalence in Adults

24.4 %



Current Data Date

Sep '18

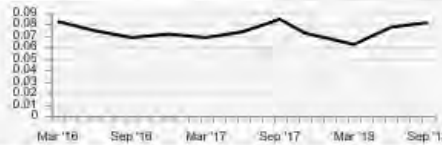
Freq of Update

Quarterly

Lower is better

Obesity Prevalence in Children

8.1 %



Current Data Date

Sep '18

Freq of Update

Quarterly

Lower is better

Overweight Prevalence
in Adults

41.7 %



Current Data Date

Sep '18

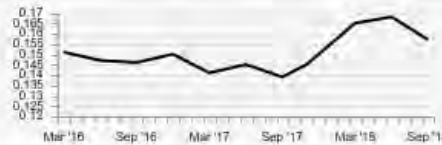
Freq of Update

Quarterly

Lower is better

Overweight Prevalence
in Children

15.7 %



Current Data Date

Sep '18

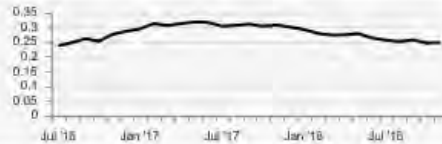
Freq of Update

Quarterly

Lower is better

Cessation Counseling
Amongst Tobacco Users

24.7 %



Current Data Date

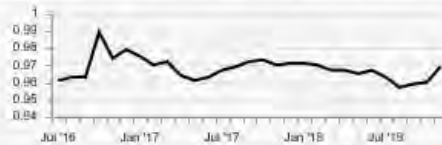
Nov '18

Freq of Update

Monthly

Tobacco Use Assessment

96.9 %



Current Data Date

Nov '18

Freq of Update

Monthly

P4I Measures (3 of 17)

Better Care- **Improve** Clinical Outcomes

Risk Adjusted Mortality
(All Cause)



Current Data Date

Freq of Update
Quarterly

Lower is better

Inpatient: Recommend
Hospital (Satisfaction)



Current Data Date

Freq of Update
Quarterly

Outpatient Provider
Communication

81.54 %



Current Data Date

Jun '18

Freq of Update
Quarterly

P4I Measures (4 of 17)

Better Care- **Improve** Safety

Catheter-Associated

Urinary Tract Infections - SIR



Current Data Date

Freq of Update

Quarterly

Lower is better

Central Line– Associated

Bloodstream Infections - SIR



Current Data Date

Freq of Update

Quarterly

Lower is better

WSS (Wrong Site Surgery)



Current Data Date

Freq of Update

Quarterly

Lower is better

URFO (Unintended

Retained Foreign Objects)



Current Data Date

Freq of Update

Quarterly

Lower is better

NSQIP (30 Day) All Case

Morbidity Index

[Click to view the report](#)

NSQIP (30 Day) All Case

Mortality Index

[Click to view the report](#)

P4I Measures (5 of 17)

Better Care- **Improve** Condition-based Quality Care

Diabetes A1c Testing

93.06 %



Current Data Date

Oct '18

Freq of Update

Monthly

Low Back Pain Imaging Studies

89.04 %



Current Data Date

Oct '18

Freq of Update

Monthly

Children with Pharyngitis

Appropriate Testing

100.00 %



Current Data Date

Oct '18

Freq of Update

Monthly

HEDIS Breast Cancer
Screening

78.74 %



Current Data Date

Oct '18

Freq of Update

Monthly

HEDIS Cervical Cancer
Screening

78.66 %



Current Data Date

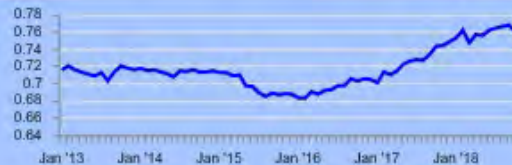
Oct '18

Freq of Update

Monthly

HEDIS Colon Cancer
Screening

76.06 %



Current Data Date

Oct '18

Freq of Update

Monthly

P4I Measures (6 of 17)

7-Day Mental
Health Follow-Up

74.29 %



Current Data Date
Oct '18

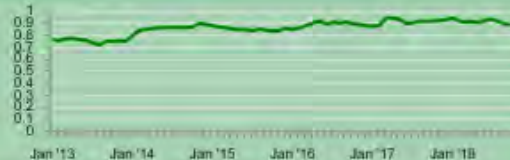
Freq of Update
Monthly

HEDIS All Cause
Readmissions

No data is currently available

Well Child

88.37 %



Current Data Date
Oct '18

Freq of Update
Monthly

IQI #33 Primary Cesarean Section

No data is currently available

Postpartum Hemorrhage

No data is currently available

Unexpected Newborn
Complication #716

No data is currently available

P4I Measures (7 of 17)

Better Care- **Improve** Comprehensive Primary Care

Days to Third Next Available

24 Hour Appointment

0.88



Current Data Date

Jan '19

Freq of Update

Monthly

Lower is better

Days to Third Next Available

Future Appointment

7.58



Current Data Date

Jan '19

Freq of Update

Monthly

Lower is better

Potentially Recapturable

PC Leakage to the Network

25.33 %



Current Data Date

Oct '18

Freq of Update

Monthly

Lower is better

PCM Continuity

52.73 %



Current Data Date

Dec '18

Freq of Update

Monthly

P4I Measures (8 of 17)

Better Care- Optimize & Standardize Access

Percent of Direct Care Enrollees
with Secure Messaging

79.05 %



Current Data Date
Jan '19

Freq of Update
Monthly

SM Response Time
One Business Day

78.41 %



Current Data Date
Jan '19

Freq of Update
Monthly

Satisfaction with
Getting Care When Needed

79.01 %

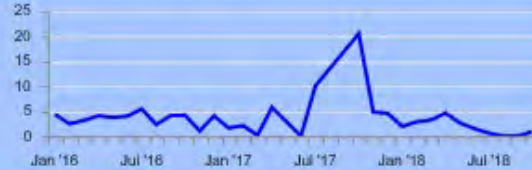


Current Data Date
Sep '18

Freq of Update
Quarterly

Specialty Care:
Referral Order to Book

0.89



Current Data Date
Oct '18

Freq of Update
Monthly

Lower is better

Specialty Care:
Booked to Actual Appt

12.40



Current Data Date
Oct '18

Freq of Update
Monthly

Lower is better

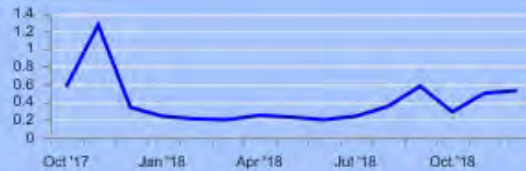
P4I Measures (9 of 17)

Ambulatory Specialty Care Leakage

No data is currently available

Active Duty Days to Primary Care Appointments

0.53



Current Data Date

Dec '18

Lower is better

Freq of Update

Monthly

Active Duty Days to Specialty Care Appointments

12.75



Current Data Date

Dec '18

Lower is better

Freq of Update

Monthly

MEB Stage Timeliness

Click documentation icon for measure details



P4I Measures (10 of 17)

Better Care - **Improve** Regulatory Compliance

American Council for Graduate Medical Education (ACGME) Accreditation Status

Click documentation Icon for measure details



Accreditation for DoD Clinical Laboratories

Click documentation Icon for measure details



Joint Commission Accreditation

Click documentation Icon for measure details



P4I Measures (11 of 17)

Lower Cost - **Improve** Stewardship

Per Member Per Month

2.93 %



Current Data Date

Sep '18

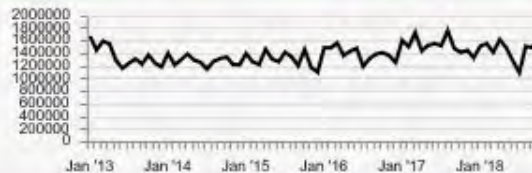
Freq of Update

Monthly

Lower is better

Total Purchased Care Cost

N/A



Current Data Date

Oct '18

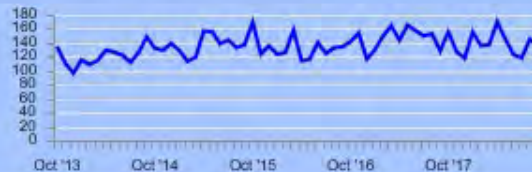
Freq of Update

Monthly

Lower is better

Private Sector Care Cost
per Prime Enrollee

-4.97 %



Current Data Date

Sep '18

Freq of Update

Monthly

Lower is better

Total Empanelment

0.1 %



Current Data Date

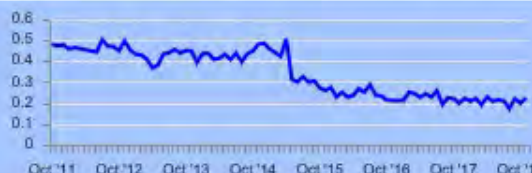
Nov '18

Freq of Update

Monthly

Pharmacy Percent Retail Spend

20.9 %



Current Data Date

Nov '18

Freq of Update

Monthly

Lower is better

P4I Measures (12 of 17)

AD: Spec Prov Efficiency

No data is currently available

Overall Occupancy Rate (US)

No data is currently available

ICU Occupancy Rate (US)

No data is currently available

Enterprise Support Activity (ESA) Net Benefit

Click documentation icon for measure details



P4I Measures (13 of 17)

MHS Dashboard - AF-C-17th MEDGRP-GOODFELLOW

All CI RMG TRN MY
 Filter

Export

View as of

Apply Clear

Layout

Go back to: [MHS](#) > [AETC](#)

∨	= decrease in current value from prior
∧	= increase in current value from prior
>	= no change in current value from prior
Trend – the number of data periods corresponding to the performance trend direction	

Readiness- **Medically** Ready Force

Measure	Data As Of	Next Refresh	Red	Yellow	Green	Blue	AF-C-17th MEDGRP-GOODFELLOW	
							Current	Prior
IMR	-	4/2019	-	-	-	-	-	-
Deployment Limiting Med/Dent Condition	-	4/2019	-	-	-	-	-	-
Percent Meeting KSAs General Surgery	-	2/2019	-	-	-	-	-	-
Percent Meeting KSAs Orthopedic Surgery	-	2/2019	-	-	-	-	-	-

P4I Measures (14 of 17)

Better Health- Improve Well-Being

Measure	Data As Of	Next Refresh	Red	Yellow	Green	Blue	AF-C-17th MEDGRP- GOODFELLOW
HRQOL	-	9/2019	-	-	-	-	Current - Prior - Performance Trend
Obesity in Adults <small>Lower is better</small>	9/2018	3/2019	-	-	-	-	Current Prior 24.4 % 24.7 % Performance Trend ∨ 3
Obesity in Children <small>Lower is better</small>	9/2018	3/2019	-	-	-	-	Current Prior 8.1 % 7.7 % Performance Trend ∧ 2
Overweight in Adults <small>Lower is better</small>	9/2018	3/2019	-	-	-	-	Current Prior 41.7 % 41.2 % Performance Trend ∧ 1
Overweight in Children <small>Lower is better</small>	9/2018	3/2019	-	-	-	-	Current Prior 15.7 % 16.8 % Performance Trend ∨ 1
Tobacco Counseling	11/2018	2/2019	-	-	-	-	Current Prior 24.7 % 24.5 % Performance Trend ∧ 1
Tobacco Use Assessment	11/2018	2/2019	-	-	-	-	Current Prior 96.9 % 96.0 % Performance Trend ∧ 3

Better Care- Improve Clinical Outcomes

Measure	Data As Of	Next Refresh	Red	Yellow	Green	Blue	AF-C-17th MEDGRP- GOODFELLOW
Risk Adjusted Mortality <small>Lower is better</small>	-	3/2019	-	-	-	-	Current - Prior - Performance Trend
Recommend Hospital	-	2/2019	-	-	-	-	Current - Prior - Performance Trend
Provider Communication	6/2018	2/2019	< 85%	>= 85%	>= 88%	>= 91%	Current Prior 81.54 % 93.13 % Performance Trend ∨ 1

Better Care- Improve Safety

Measure	Data As Of	Next Refresh	Red	Yellow	Green	Blue	AF-C-17th MEDGRP- GOODFELLOW
CAUTI - SIR <small>Lower is better</small>	-	4/2019	-	-	-	-	Current - Prior - Performance Trend
CLABSI - SIR <small>Lower is better</small>	-	4/2019	-	-	-	-	Current - Prior - Performance Trend
WSS <small>Lower is better</small>	-	4/2019	-	-	-	-	Current - Prior - Performance Trend
URFO <small>Lower is better</small>	-	4/2019	-	-	-	-	Current - Prior - Performance Trend

P4I Measures (15 of 17)

Better Care-**Improve** Condition-based Quality Care

Measure	Data As Of	Next Refresh	Red	Yellow	Green	Blue	AF-C-17th MEDGRP- GOODFELLOW								
Diabetes A1c Testing	10/2018	2/2019	< 90.54%	>= 90.54%	>= 93.37%	>= 94.89%	<table border="1"> <tr><td>Current</td><td>Prior</td></tr> <tr><td>93.06 %</td><td>93.02 %</td></tr> <tr><td>Performance</td><td>Trend</td></tr> <tr><td>^</td><td>3</td></tr> </table>	Current	Prior	93.06 %	93.02 %	Performance	Trend	^	3
Current	Prior														
93.06 %	93.02 %														
Performance	Trend														
^	3														
Low Back Pain	10/2018	2/2019	< 73.91%	>= 73.91%	>= 78.57%	>= 82.98%	<table border="1"> <tr><td>Current</td><td>Prior</td></tr> <tr><td>89.04 %</td><td>89.19 %</td></tr> <tr><td>Performance</td><td>Trend</td></tr> <tr><td>v</td><td>1</td></tr> </table>	Current	Prior	89.04 %	89.19 %	Performance	Trend	v	1
Current	Prior														
89.04 %	89.19 %														
Performance	Trend														
v	1														
Children w/Pharyngitis	10/2018	2/2019	< 86.86%	>= 86.86%	>= 90.61%	>= 94.12%	<table border="1"> <tr><td>Current</td><td>Prior</td></tr> <tr><td>100.00 %</td><td>100.00 %</td></tr> <tr><td>Performance</td><td>Trend</td></tr> <tr><td>></td><td>8</td></tr> </table>	Current	Prior	100.00 %	100.00 %	Performance	Trend	>	8
Current	Prior														
100.00 %	100.00 %														
Performance	Trend														
>	8														
Breast Cancer Screening	10/2018	2/2019	< 73.55%	>= 73.55%	>= 77.49%	>= 81.04%	<table border="1"> <tr><td>Current</td><td>Prior</td></tr> <tr><td>78.74 %</td><td>78.15 %</td></tr> <tr><td>Performance</td><td>Trend</td></tr> <tr><td>^</td><td>5</td></tr> </table>	Current	Prior	78.74 %	78.15 %	Performance	Trend	^	5
Current	Prior														
78.74 %	78.15 %														
Performance	Trend														
^	5														
Cervical Cancer Screening	10/2018	2/2019	< 75.91%	>= 75.91%	>= 79.02%	>= 82.48%	<table border="1"> <tr><td>Current</td><td>Prior</td></tr> <tr><td>78.66 %</td><td>78.59 %</td></tr> <tr><td>Performance</td><td>Trend</td></tr> <tr><td>^</td><td>1</td></tr> </table>	Current	Prior	78.66 %	78.59 %	Performance	Trend	^	1
Current	Prior														
78.66 %	78.59 %														
Performance	Trend														
^	1														
Colon Cancer Screening	10/2018	2/2019	< 63.34%	>= 63.34%	>= 70.21%	>= 74.7%	<table border="1"> <tr><td>Current</td><td>Prior</td></tr> <tr><td>76.06 %</td><td>76.76 %</td></tr> <tr><td>Performance</td><td>Trend</td></tr> <tr><td>v</td><td>1</td></tr> </table>	Current	Prior	76.06 %	76.76 %	Performance	Trend	v	1
Current	Prior														
76.06 %	76.76 %														
Performance	Trend														
v	1														

Measure	Data As Of	Next Refresh	Red	Yellow	Green	Blue	Current	Prior
7-Day Mental Health	10/2018	2/2019	< 51.72%	>= 51.72%	>= 62.9%	>= 69.68%	74.29 %	77.27 %
All Cause Readmissions	-	2/2019	-	-	-	-	-	-
Well Child	10/2018	2/2019	< 81.9%	>= 81.9%	>= 86.59%	>= 89.81%	88.37 %	88.37 %
IQI #33 Primary Cesarean Section	-	4/2019	-	-	-	-	-	-
Postpartum Hemorrhage	-	4/2019	-	-	-	-	-	-
Unexpected Newborn Complication #716	-	4/2019	-	-	-	-	-	-

P4I Measures (16 of 17)

Better Care- Improve Comprehensive Primary Care

Measure	Data As Of	Next Refresh	Red	Yellow	Green	Blue	AF-C-17th MEDGRP- GOODFELLOW
24 Hour Appts <small>Lower is better</small>	1/2019	3/2019	>1.50 Days	<=1.5 Days	<=1 Days	<=0.83 Days	Current: 0.88, Prior: 1.45 Performance: 2, Trend: 2
Future Appts <small>Lower is better</small>	1/2019	3/2019	>8 Days	<=8 Days	<=7 Days	<=2.3 Days	Current: 7.58, Prior: 12.45 Performance: 1, Trend: 1
PC Leakage (Recap) <small>Lower is better</small>	10/2018	3/2019	>= 12.00%	< 12.00%	<= 8.00%	<= 3.00%	Current: 25.33%, Prior: 31.87% Performance: 1, Trend: 1
PCM Continuity	12/2018	2/2019	< 55%	>= 55%	>= 65%	>= 75%	Current: 52.73%, Prior: 41.60% Performance: 1, Trend: 1

Better Care- Optimize & Standardize Access

Measure	Data As Of	Next Refresh	Red	Yellow	Green	Blue	AF-C-17th MEDGRP- GOODFELLOW
SM Enrollment	1/2019	3/2019	<37%	>=37%	>=50%	>=75%	Current: 79.05%, Prior: 78.16% Performance: 2, Trend: 2
SM Response Time 1 Day	1/2019	3/2019	<70%	>=70%	>=80%	>=87%	Current: 78.41%, Prior: 72.38% Performance: 2, Trend: 2

Getting Care When Needed	9/2018	2/2019	<81.20%	>=81.20%	>=84.40%	>=87.20%	Current: 79.01%, Prior: 77.83% Performance: 1, Trend: 1
Specialty: Referral to Book <small>Lower is better</small>	10/2018	2/2019	>4 Days	<=4 Days	<=3 Days	<=1 Day	Current: 0.89, Prior: 0 Performance: 1, Trend: 1
Specialty: Booked to Appt <small>Lower is better</small>	10/2018	2/2019	>24 Days	<=24 Days	<=15 Days	<=7.5 Days	Current: 12.40, Prior: 33.99 Performance: 1, Trend: 1
Amb Specialty Care Leakage <small>Lower is better</small>	-	2/2019	-	-	-	-	Current: -, Prior: - Performance: -, Trend: -
AD: Days To Primary Care <small>Lower is better</small>	12/2018	2/2019	>1.5 Days	<=1.5 Days	<=1 Days	<=0.83 Days	Current: 0.53, Prior: 0.50 Performance: 2, Trend: 2
AD: Days To Specialty Care <small>Lower is better</small>	12/2018	2/2019	>24 Days	<=24 Days	<=15 Days	<=7.5 Days	Current: 12.75, Prior: 14.83 Performance: 1, Trend: 1
MEB Stage Timeliness	-	3/2019	-	-	-	-	Current: -, Prior: - Performance: -, Trend: -

P4I Measures (17 of 17)

Better Care - Improve Regulatory Compliance

Measure	Data As Of	Next Refresh	Red	Yellow	Green	Blue	AF-C-17th MEDGRP- GOODFELLOW	Current	Prior
ACGME Accreditation Status	-	9/2019	-	-	-	-	Performance	Trend	-
Accreditation for DoD Clinical Laboratories	-	1/2019	-	-	-	-	Current	Prior	-
Joint Commission Accreditation	-	1/2019	-	-	-	-	Performance	Trend	-

Lower Cost - Improve Stewardship

Measure	Data As Of	Next Refresh	Red	Yellow	Green	Blue	AF-C-17th MEDGRP- GOODFELLOW	Current	Prior
PMPM Lower is better	9/2018	5/2019	> 3.20%	-	<= 3.20%	<= 0.00%	Performance	Trend	2.93 % 1.99 %
Total Purchased Care Cost Lower is better	10/2018	3/2019	> FY Target	-	<= FY Target	<= Next FY Target	Current	Prior	\$1.61M \$1.48M
Private Sector Care Cost Lower is better	9/2018	5/2019	> 3.20%	-	<= 3.20%	<= 0.00%	Performance	Trend	-4.97 % -5.95 %

Total Empanelment	11/2018	2/2019	< 0.00%	-	< 5.00% but >= 0.00%	>= 5.00%	Current	Prior	0.1 % 0.0 %
Pharmacy Percent Retail Lower is better	11/2018	2/2019	> 30%	-	<= 30%	<=25%	Current	Prior	20.9 % 20.9 %
AD: Spec Prov Efficiency	-	4/2019	-	-	-	-	Performance	Trend	-
Overall Occ Rate (US)	-	2/2019	-	-	-	-	Current	Prior	-
ICU Occ Rate (US)	-	2/2019	-	-	-	-	Performance	Trend	-
ESA Benefit	-	3/2019	-	-	-	-	Current	Prior	-



17th Medical Group



Welcomes You!

Readiness and Trusted Care Every day



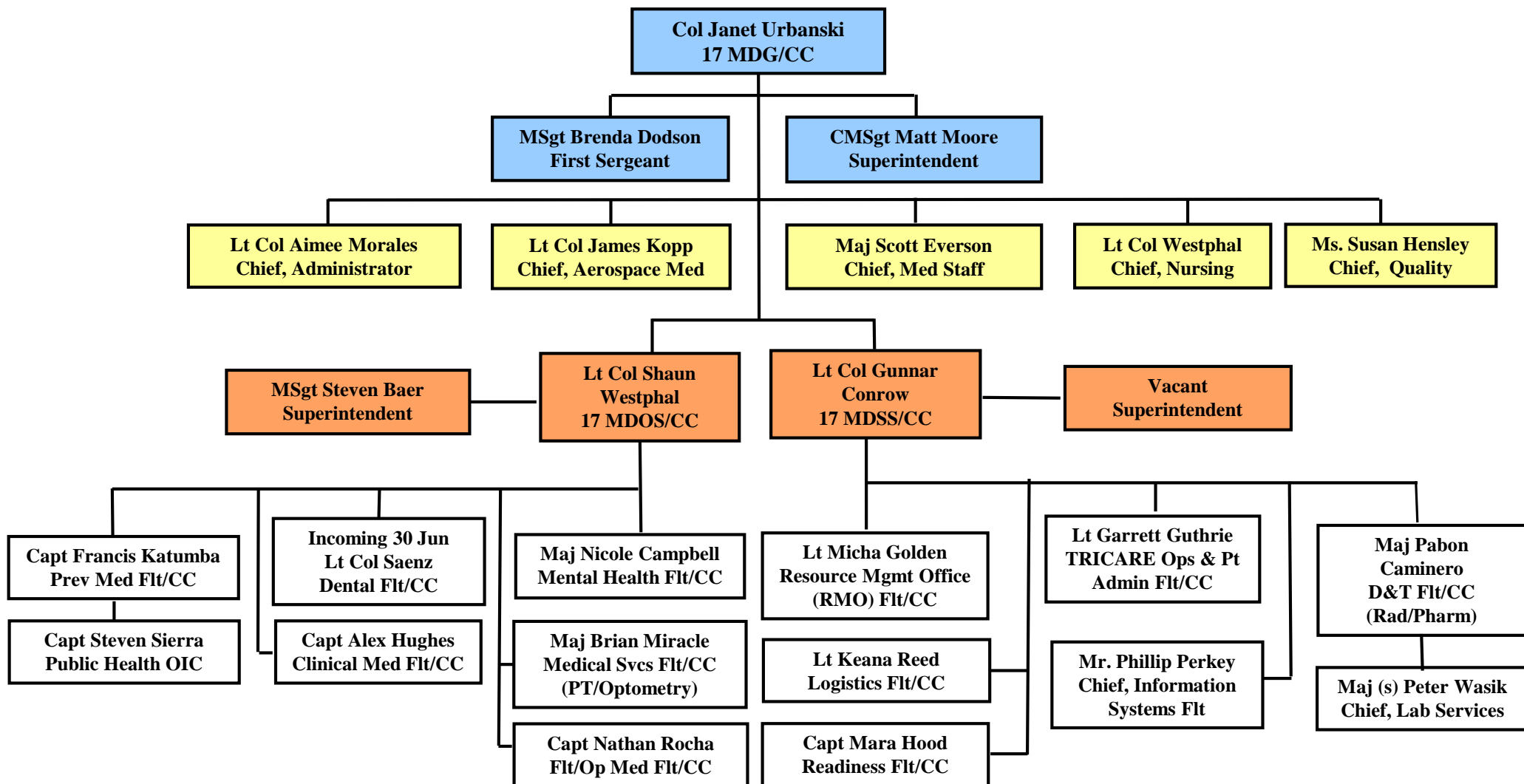
Ross Clinic Heritage



- Colonel Ross earned a BS in Pharmacy in 1967
- Enlisted as Amn Basic in 1968
- Received his commission in 1969
- 1st pharmacist to attend Armed Forces Staff College
- 1st pharmacist selected for MDG/CC in 1992
- Known for his integrity, service, excellence, and loyalty: “Now go out and make a difference!”



17 MDG Leadership



Readiness and Trusted Care Every day



Mission: Readiness and Trusted Care Every Day



Vision: An Engaged Team Committed to a Healthy Population

17th Medical Group Goals

Maximize Readiness

Encourage Healthy Behaviors

Champion Better Care, Quality and a Safe Environment

Proactively Manage Resources and Lower Cost

Minimize Student Lost Training Time

Train and Develop Our People

Care For Our Families

Quadruple Aim Performance Process Initiatives

Individual Medical Readiness Optimization

Increase Clinical Data Timeliness

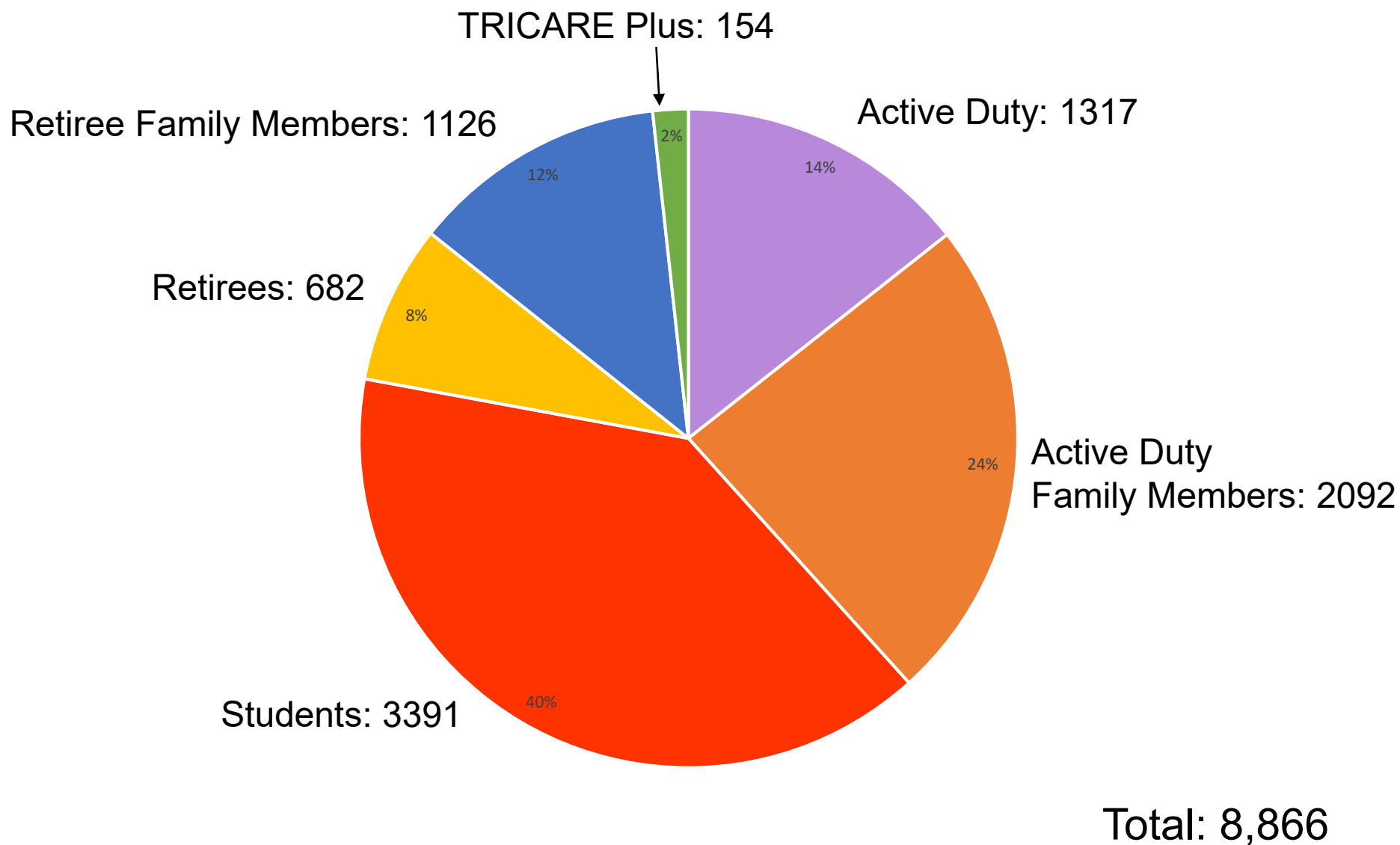
Improve Overall Access

Improve Workload Reporting Accuracy

Readiness and Trusted Care Every day



Patient Population





Services Provided



Medical Operations Squadron

- Family Medicine
- Flight Medicine
- Student Clinic
- Pediatrics
- Women's Health
- Mental Health
- Dental Clinic
- Physical Therapy
- Optometry
- Allergy/Immunizations
- Bioenvironmental
- Public Health

Medical Support Squadron

- Radiology
- Laboratory
- Pharmacy
- Patient Administration
 - Referral Management
 - Medical Records
 - TRICARE benefits assistance
- Resource Management
- Logistics
- Facility Management
- Readiness
- Information Systems

Referral Hospitals

- Community Medical Ctr (171 beds, Level III Trauma Ctr, Specialty Svcs)
- Shannon Medical Ctr (400 beds, Level III Trauma Ctr, Specialty Svcs)



By the Numbers



Average Annual Production

Primary Care visits	23,400
Mental Health visits	2,800
Dental Clinic visits	6,100
Laboratory tests	70,000
Pharmacy prescriptions	110,000
Diagnostic images	5,800
Referrals to other facilities	7,800

Staff

Officers
Enlisted
GS
Contract
Total

Assigned/ Authorized

35/45
99/97
40/45
19/29
193/216

Facilities

Main Clinic	54,366
Mental Health Clinic	4,415
Bioenvironmental/Resource Mgmt	1,879
Warehouse	1,500

Sq ft

54,366
4,415
1,879
1,500

Readiness and Trusted Care Every day



Successes



- **2018 UEI “Highly Effective”**
- **Innovation**
 - (1) green belt and (4) green belts in training; sets the standard for the Wg
 - Easy to use CPI (COBRA) suggestion forms reviewed by COBRA Pit Working Gp
 - Incorporate suggestions from Patient Engagement Council
- **Patient Engagement – 2018/2019 DoD Patient Engagement Award Winner**
 - Patient and Family Engagement Advisory Council
 - “Text Me Now” option to provide customer feedback
 - Amplified efforts to reach out to joint service partners, spouses & students
 - New tailored in-processing packets and student cards
 - Facebook Live events hugely successful
 - Health Fair: coalesced 15 on/off base organizations, 2k in-person/virtual attendees
- **Partnerships:** 8 agreements expand training **opportunities** and capabilities
- **Medical Readiness Focus:** base PMC rate is 2.4%, FMC is 82.6%, IDES processing #4 in AF, DHRA timeliness top three in AF



Challenges



- **Space Constraints**
 - HFO visit in 2018 made recommendations for expansion/renovation
 - Right size & remodel lab, expand Bioenvironmental and Education and Training, expand and remodel Mental Health, improve privacy and patient safety of front desk area
 - Optimistic project will be funded in FY2020
- **Staffing**
 - Small departments can experience service gaps with loss of one person
 - Recruiting clinical professionals to come to San Angelo can be difficult
 - Lack of flexibility in civilian and GS hiring systems
 - Enlisted members often here too long; skills deteriorate, become bored
- **Expectation Management in supporting 17 TRW functions/events**
- **Developing Ready Medics:** allocating time for staff to use TAAs
- **Meeting needs of sister services:** different processes/paperwork/systems
- **IT:** EMR/network outages, transition to MEDCOI
- **EFMP:** staffing, sister services/517 TRG challenges, new requirements???
- **Churn:** DHA/QPP/sq reorg/703/4684...



Questions?

17TH MEDICAL GROUP – GOODFELLOW

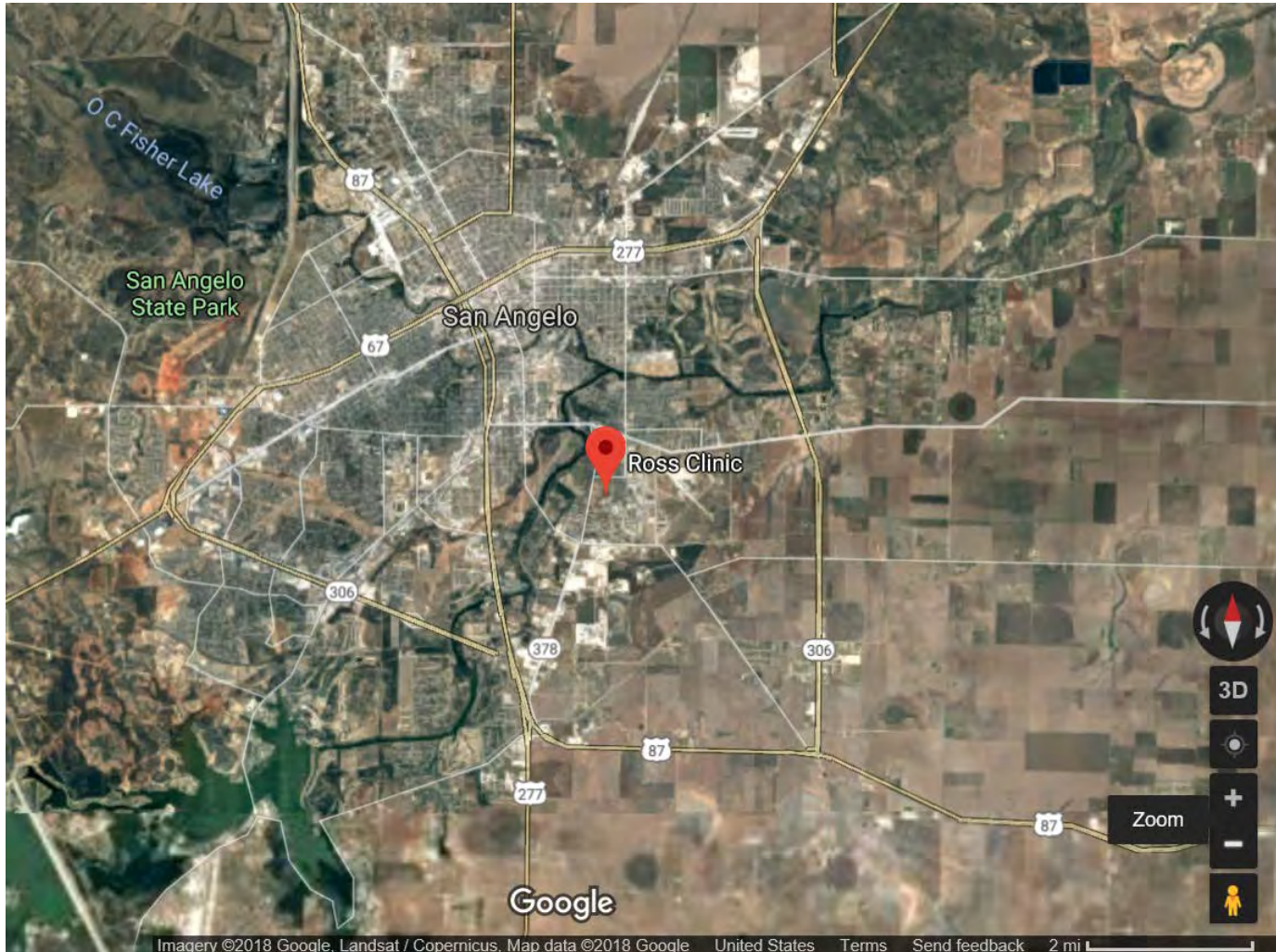


Table of Contents

<u>3</u>
<u>4</u>
<u>7</u>
<u>21</u>
<u>28</u>
<u>33</u>
<u>38</u>
<u>43</u>

Goodfellow – Overview

❑ # of Buildings and Age¹: 3, 6 / 41

❑ Avg # of Encounters per day²:

Tmt DMIS ID	Tmt DMIS ID Name	2014	2015	2016	2017	2018
0364	AF-C-17th MEDGRP-GOODFELLOW	270	269	273	258	266

❑ ER or Immediate Care³: No

¹ Source: DHA / Facilities Management Division

² Source: M2 CAPER, MEPRS B only, ER (BIA) and Immediate Care (BHI) omitted, Monday-Friday only

³ Source: M2 CAPER, ER (BIA) or Immediate Care (BHI) coded

Inpatient Care

Goodfellow – Prime/Plus Enrollment Inpatient Care¹

0364 AF-C-17th MEDGRP-GOODFELLOW Prime/Plus Enrollees Treated in Direct Care										
Product Line	Tmt DMIS ID Name	FY 2016			FY 2017			FY 2018		
		DC Disps	DC CMI	DC Cost per RWP ³	DC Disps	DC CMI	DC Cost per RWP ³	DC Disps	DC CMI	DC Cost per RWP ³
MED	AMC BAMC-FSH	10	0.7587	\$ 12,155	6	0.5837	\$ 8,800	6	0.7967	\$ 9,610
	AMC EISENHOWER-GORDON	2	0.6097	\$ 8,794	5	0.8057	\$ 15,875	3	0.6732	\$ 9,539
	NH CAMP PENDLETON	3	0.5714	\$ 10,694						
SURG	AF-MC-60th MEDGRP-TRAVIS							2	2.2504	\$ 12,045
	AMC BAMC-FSH	12	1.8365	\$ 12,475	18	2.0420	\$ 10,824	16	1.8568	\$ 9,385
OB	AMC TRIPLER-SHAFTER				2	0.4049	\$ 10,593			
MH	AMC DARNALL-HOOD	1	0.7173	\$ 9,054	3	0.4946	\$ 38,322	1	0.5379	\$ 19,883
	AMC EISENHOWER-GORDON	2	0.6197	\$ 44,046	5	0.7285	\$ 32,288	5	0.4030	\$ 26,540
	NMC SAN DIEGO	3	0.6940	\$ 13,452	2	0.7126	\$ 11,866	3	0.5557	\$ 10,561
Total/Overall		42	1.1235	\$ 13,183	53	1.1403	\$ 14,031	49	1.0823	\$ 11,654

0364 AF-C-17th MEDGRP-GOODFELLOW Prime/Plus Enrollees Treated in Purchased Care									
Product Line	FY 2016			FY 2017			FY 2018		
	PC Adms	PC CMI	PC Paid per RWP ²	PC Adms	PC CMI	PC Paid per RWP ²	PC Adms	PC CMI	PC Paid per RWP ²
MED	58	0.8302	\$ 7,611	106	0.8928	\$ 8,365	81	0.8646	\$ 10,438
SURG	75	2.5799	\$ 8,816	71	2.5499	\$ 7,975	68	2.5007	\$ 9,622
OB	110	0.5402	\$ 9,009	140	0.5513	\$ 9,038	99	0.5955	\$ 8,567
NEWBORN	107	0.3373	\$ 7,651	134	0.6007	\$ 9,024	85	0.2445	\$ 8,915
MH	3	0.6619	\$ 7,426	8	0.4764	\$ 8,076	2	0.5258	\$ 7,309
Total/Overall	353	0.9608	\$ 8,547	459	0.9524	\$ 8,441	335	0.9579	\$ 9,553

Goodfellow – Prime/Plus Enrollment Inpatient Care¹ – AD Only

0364 AF-C-17th MEDGRP-GOODFELLOW Prime/Plus Enrollees Treated in Direct Care - AD ONLY										
Product Line	Tmt DMIS ID Name	FY 2016			FY 2017			FY 2018		
		DC Disps	DC CMI	DC Cost per RWP ³	DC Disps	DC CMI	DC Cost per RWP ³	DC Disps	DC CMI	DC Cost per RWP ³
MED	AMC BAMC-FSH	4	0.7159	\$ 14,841	4	0.6216	\$ 7,302	3	1.1001	\$ 7,580
	AMC EISENHOWER-GORDON	2	0.6097	\$ 8,794	5	0.8057	\$ 15,875	3	0.6732	\$ 9,539
	NH CAMP PENDLETON	3	0.5714	\$ 10,694						
SURG	AF-MC-60th MEDGRP-TRAVIS							2	2.2504	\$ 12,045
	AMC BAMC-FSH	6	1.7062	\$ 12,166	11	2.1154	\$ 10,846	14	1.9303	\$ 8,922
OB	AMC TRIPLER-SHAFTER				2	0.4049	\$ 10,593			
MH	AMC DARNALL-HOOD	1	0.7173	\$ 9,054	3	0.4946	\$ 38,322	1	0.5379	\$ 19,883
	AMC EISENHOWER-GORDON	2	0.6197	\$ 44,046	5	0.7285	\$ 32,288	5	0.4030	\$ 26,540
	NMC SAN DIEGO	3	0.6940	\$ 13,452	2	0.7126	\$ 11,866	3	0.5557	\$ 10,561
Total/Overall		27	1.1048	\$ 13,747	39	1.1110	\$ 15,237	36	1.2793	\$ 10,382

0364 AF-C-17th MEDGRP-GOODFELLOW Prime/Plus Enrollees Treated in Purchased Care - AD ONLY									
Product Line	FY 2016			FY 2017			FY 2018		
	PC Adms	PC CMI	PC Paid per RWP ²	PC Adms	PC CMI	PC Paid per RWP ²	PC Adms	PC CMI	PC Paid per RWP ²
MED	15	0.8702	\$ 7,598	20	0.8797	\$ 7,910	22	0.7853	\$ 7,408
SURG	25	2.1476	\$ 8,913	12	3.1269	\$ 9,136	18	2.7188	\$ 8,684
OB	24	0.5716	\$ 8,987	21	0.6332	\$ 8,975	20	0.5786	\$ 8,778
MH	1	0.7175	\$ 7,487	2	0.4950	\$ 9,020	0	0.0000	\$ 0
Total/Overall	65	1.2489	\$ 8,702	55	1.2619	\$ 8,792	60	1.2965	\$ 8,415

Ambulatory Care

Goodfellow – Direct Care Appointments by Appointment Status¹

Appointment Status	0364 - AF-C-17th MEDGRP-GOODFELLOW					
	2016 - # Appts	2016 - % Total	2017 - # Appts	2017 - % Total	2018 - # Appts	2018 - % Total
1 Pending			3	0%	14	0%
2 Kept	33,829	41%	28,918	38%	27,204	35%
3 Canceled	9,570	12%	8,534	11%	8,501	11%
4 No Show	2,382	3%	1,931	3%	2,204	3%
5 Walk In	7,027	9%	4,234	6%	8,776	11%
6 Sick Call	565	1%	1,649	2%	4,175	5%
7 Telcon	27,852	34%	30,563	40%	27,060	35%
8 LWOBS	184	0%	107	0%	135	0%
10 Occ-Svc	117	0%	303	0%	246	0%
Grand Total	81,526		76,242		78,315	

Goodfellow – Direct Care Appointments by Appointment Type¹

Appt Type Group	0364 - AF-C-17th MEDGRP-GOODFELLOW					
	2016 - # Appts	2016 - % Total	2017 - # Appts	2017 - % Total	2018 - # Appts	2018 - % Total
24HR	7,270	9%	5,076	7%	6,644	8%
ACUTE	431	1%	3,948	5%	9,261	12%
FTR	37,728	46%	28,280	37%	25,359	32%
GRP	1,785	2%	1,532	2%	1,791	2%
PCM	5	0%	1	0%	4	0%
PROC	1,610	2%	1,624	2%	1,540	2%
ROUT	779	1%	1,612	2%	649	1%
SPEC	1,391	2%	871	1%	3,363	4%
T-CON*	28,931	35%	32,047	42%	28,181	36%
WELL	1,596	2%	1,251	2%	1,523	2%
Grand Total	81,526		76,242		78,315	

Goodfellow – FY18 Direct Care Ambulatory Encounters¹

PRODUCT	0364 - AF-C-17th MEDGRP-GOODFELLOW			
LINE	Seen	Telcon	Total	% of Total
MH	7,104	2,747	9,851	14.61%
OBGYN	2,147	2,451	4,598	6.82%
OPTOM	1,594	31	1,625	2.41%
ORTHO	3,233	150	3,383	5.02%
OTHER	275	0	275	0.41%
PC	25,959	21,719	47,678	70.73%
TOTAL	40,312	27,098	67,410	

Goodfellow – Direct Care Ambulatory Surgery¹

This facility did not report any workload coded Same Day Surgery.

Goodfellow – FY18 Direct Care Ambulatory Surgery¹

Top 20 Procedure Codes

Goodfellow – Ambulatory Workload and Cost¹

	Product Line	Encounters/Services		Average RVU		Cost/Paid per RVU	
		DC	PC	DC	PC	DC	PC ²
		Encounters	Services	RVU / Encounters	RVU / Services	Full Cost / RVU	Amount Paid / RVU
FY 2018 ³	PC	47,678	32,327	1.17	1.12	\$ 148	\$ 45
	OBGYN	4,598	4,869	1.39	0.96	\$ 115	\$ 60
	MH	9,851	6,726	1.74	1.80	\$ 149	\$ 40
	OTHER	5,283	79,423	3.44	0.92	\$ 59	\$ 50
	TOTAL	67,410	123,345	1.45	1.02	\$ 129	\$ 48
FY 2017 ³	PC	48,971	31,875	1.12	1.06	\$ 150	\$ 46
	OBGYN	4,746	7,415	1.50	1.02	\$ 110	\$ 54
	MH	7,376	9,934	1.74	1.17	\$ 133	\$ 58
	OTHER	4,525	82,593	2.88	0.92	\$ 58	\$ 52
	TOTAL	65,618	131,817	1.34	0.98	\$ 131	\$ 51
FY 2016 ³	PC	52,402	24,503	1.32	1.14	\$ 125	\$ 49
	OBGYN	4,412	7,588	1.68	1.02	\$ 115	\$ 65
	MH	6,224	3,962	1.35	2.19	\$ 212	\$ 44
	OTHER	6,266	73,999	3.08	0.95	\$ 53	\$ 56
	TOTAL	69,304	110,052	1.51	1.04	\$ 118	\$ 54

Goodfellow – FY18 Direct and Purchased Care Ambulatory Workload by Enrollment Category¹

AF-C-17th MEDGRP-GOODFELLOW - FY 2018 DIRECT CARE AMBULATORY WORKLOAD																					
Product Line	Prime-Site			Reliant			Prime-Other			Plus			TFL			Not Enrolled			Total		
	Encs	Avg RVU	Cost/RVU	Encs	Avg RVU	Cost/RVU	Encs	Avg RVU	Cost/RVU	Encs	Avg RVU	Cost/RVU	Encs	Avg RVU	Cost/RVU	Encs	Avg RVU	Cost/RVU	Encs	Avg RVU	Cost/RVU
PC	43,983	1.17	\$ 150	1,220	1.39	\$ 101	841	1.16	\$ 116	1	1.99	\$ 149	1,027	0.95	\$ 178	606	1.36	\$ 92	47,678	1.17	\$ 148
OBGYN	4,388	1.39	\$ 115	39	1.86	\$ 119	72	1.44	\$ 120	0	0.00	\$ 0	54	1.15	\$ 110	45	1.09	\$ 116	4,598	1.39	\$ 115
MH	9,028	1.74	\$ 147	276	1.99	\$ 157	350	1.60	\$ 164	0	0.00	\$ 0	0	0.00	\$ 0	197	1.51	\$ 183	9,851	1.74	\$ 149
OTHER	4,891	3.41	\$ 59	150	3.61	\$ 57	108	4.57	\$ 59	0	0.00	\$ 0	47	5.65	\$ 60	87	2.31	\$ 46	5,283	3.44	\$ 59
TOTAL	62,290	1.44	\$ 130	1,685	1.70	\$ 104	1,371	1.56	\$ 115	1	1.99	\$ 149	1,128	1.15	\$ 151	935	1.47	\$ 106	67,410	1.45	\$ 129

↑
21% AMC MADIGAN-LEWIS; 15% MCSC

Work performed by a provider within Goodfellow’s PRISM (parent)²:

AF-C-17th MEDGRP-GOODFELLOW - FY 2018 PURCHASED CARE AMBULATORY WORKLOAD																					
Product Line	Prime-Site			Reliant			Prime-Other			Plus			TFL			Not Enrolled			Total		
	Svcs	Avg RVU	Paid/RVU	Svcs	Avg RVU	Paid/RVU	Svcs	Avg RVU	Paid/RVU	Svcs	Avg RVU	Paid/RVU	Svcs	Avg RVU	Paid/RVU	Svcs	Avg RVU	Paid/RVU	Svcs	Avg RVU	Paid/RVU
PC	14,459	1.23	\$ 47	107	1.11	\$ 48	4,143	1.09	\$ 50	0	0.00	\$ 0	1,292	1.27	\$ 46	12,326	1.00	\$ 42	32,327	1.12	\$ 45
OBGYN	3,346	1.00	\$ 61	1	0.13	\$ 57	210	1.40	\$ 56	0	0.00	\$ 0	18	2.38	\$ 36	1,294	0.79	\$ 59	4,869	0.96	\$ 60
MH	4,989	1.84	\$ 39	4	2.65	\$ 35	1,012	1.02	\$ 79	0	0.00	\$ 0	38	1.39	\$ 29	683	2.67	\$ 24	6,726	1.80	\$ 40
OTHER	52,990	1.05	\$ 50	211	1.60	\$ 50	6,200	1.03	\$ 53	0	0.00	\$ 0	3,448	0.48	\$ 48	16,574	0.55	\$ 45	79,423	0.92	\$ 50
TOTAL	75,784	1.13	\$ 49	323	1.45	\$ 49	11,565	1.06	\$ 54	0	0.00	\$ 0	4,796	0.71	\$ 47	30,877	0.79	\$ 42	123,345	1.02	\$ 48

↑
84% MCSC

¹ Source: DC = M2 CAPER; PC = MDR TED Non-Institutional (using “ambulatory” defined by eMSM workgroup; drug costs included; OHI omitted). Includes all beneficiaries. Use caution when making comparisons between DC and PC. Encounters and Services are not comparable. They are provided to give a sense of volume.

² Purchased Care includes 13% increase for overhead burdening.

³ Direct Care costs based on FY17 MEPRS expenses, adjusted for inflation.

Goodfellow – FY17 Direct and Purchased Care Ambulatory Workload by Enrollment Category¹

AF-C-17th MEDGRP-GOODFELLOW - FY 2017 DIRECT CARE AMBULATORY WORKLOAD																					
Product Line	Prime-Site			Reliant			Prime-Other			Plus			TFL			Not Enrolled			Total		
	Encs	Avg RVU	Cost/RVU	Encs	Avg RVU	Cost/RVU	Encs	Avg RVU	Cost/RVU	Encs	Avg RVU	Cost/RVU	Encs	Avg RVU	Cost/RVU	Encs	Avg RVU	Cost/RVU	Encs	Avg RVU	Cost/RVU
PC	45,333	1.13	\$ 151	1,143	1.19	\$ 129	597	1.18	\$ 132	5	1.79	\$ 77	1,201	0.95	\$ 173	692	1.20	\$ 159	48,971	1.12	\$ 150
OBGYN	4,501	1.51	\$ 110	53	2.31	\$ 114	59	1.17	\$ 111	0	0.00	\$ 0	56	0.78	\$ 102	77	1.30	\$ 109	4,746	1.50	\$ 110
MH	6,685	1.76	\$ 132	280	1.66	\$ 139	234	1.42	\$ 162	0	0.00	\$ 0	0	0.00	\$ 0	177	1.19	\$ 167	7,376	1.74	\$ 133
OTHER	4,204	2.91	\$ 58	113	2.70	\$ 58	90	2.93	\$ 55	2	4.80	\$ 60	54	2.22	\$ 48	62	1.62	\$ 48	4,525	2.88	\$ 58
TOTAL	60,723	1.35	\$ 131	1,589	1.42	\$ 121	980	1.40	\$ 123	7	2.65	\$ 68	1,311	1.00	\$ 159	1,008	1.23	\$ 147	65,618	1.34	\$ 131

↑
22% AMC MADIGAN-LEWIS

Work performed by a provider within Goodfellow's PRISM (parent)²:

AF-C-17th MEDGRP-GOODFELLOW - FY 2017 PURCHASED CARE AMBULATORY WORKLOAD																					
Product Line	Prime-Site			Reliant			Prime-Other			Plus			TFL			Not Enrolled			Total		
	Svcs	Avg RVU	Paid/RVU	Svcs	Avg RVU	Paid/RVU	Svcs	Avg RVU	Paid/RVU	Svcs	Avg RVU	Paid/RVU	Svcs	Avg RVU	Paid/RVU	Svcs	Avg RVU	Paid/RVU	Svcs	Avg RVU	Paid/RVU
PC	12,483	1.14	\$ 46	74	1.51	\$ 47	3,330	1.08	\$ 49	4	1.69	\$ 0	3,270	1.11	\$ 47	12,714	0.95	\$ 44	31,875	1.06	\$ 46
OBGYN	5,109	1.16	\$ 55	0	0.00	\$ 0	321	1.18	\$ 42	0	0.00	\$ 0	24	2.06	\$ 47	1,961	0.64	\$ 54	7,415	1.02	\$ 54
MH	8,562	1.05	\$ 63	11	2.34	\$ 54	277	2.90	\$ 35	0	0.00	\$ 0	132	0.73	\$ 25	952	1.82	\$ 42	9,934	1.17	\$ 58
OTHER	57,047	1.02	\$ 52	370	1.13	\$ 52	6,252	0.86	\$ 73	3	0.71	\$ 53	1,777	1.27	\$ 49	17,144	0.59	\$ 45	82,593	0.92	\$ 52
TOTAL	83,201	1.05	\$ 52	455	1.22	\$ 51	10,180	1.00	\$ 60	7	1.27	\$ 13	5,203	1.16	\$ 47	32,771	0.77	\$ 45	131,817	0.98	\$ 51

↑
85% MCSC

¹ Source: DC = M2 CAPER; PC = MDR TED Non-Institutional (using "ambulatory" defined by eMSM workgroup; drug costs included; OHI omitted). Includes all beneficiaries. Use caution when making comparisons between DC and PC. Encounters and Services are not comparable. They are provided to give a sense of volume.

² Purchased Care includes 13% increase for overhead burdening.

³ Direct Care costs based on FY17 MEPRS expenses.

Goodfellow – Prime Enrollment Ambulatory Care¹ – DIRECT CARE

Tmt Parent Goodfellow?	Product Line	Tmt Parent DMIS ID Name	2017					2018				
			Encounters	Enh Total RVU	Full Cost ²	Avg RVU	Cost ² /RVU	Encounters	Enh Total RVU	Full Cost ²	Avg RVU	Cost ² /RVU
YES	PC	AF-C-17th MEDGRP-GOODFELLOW	45,333	51,003.96	\$ 7,678,595	1.13	\$ 151	43,983	51,360.47	\$ 7,707,436	1.17	\$ 150
	OBGYN	AF-C-17th MEDGRP-GOODFELLOW	4,501	6,801.11	\$ 745,346	1.51	\$ 110	4,388	6,103.19	\$ 703,506	1.39	\$ 115
	MH	AF-C-17th MEDGRP-GOODFELLOW	6,685	11,792.91	\$ 1,550,879	1.76	\$ 132	9,028	15,722.22	\$ 2,312,603	1.74	\$ 147
	OTHER	AF-C-17th MEDGRP-GOODFELLOW	4,204	12,213.28	\$ 710,485	2.91	\$ 58	4,891	16,697.75	\$ 980,188	3.41	\$ 59
Yes Total			60,723	81,811.26	\$ 10,685,304	1.35	\$ 131	62,290	89,883.63	\$ 11,703,733	1.44	\$ 130
NO	PC	AMC EISENHOWER-GORDON	1,574	3,042.71	\$ 270,518	1.93	\$ 89	1,590	3,032.68	\$ 273,080	1.91	\$ 90
	PC	AF-ASU-59th MDW-WHASC-LACKLAND	241	435.89	\$ 43,784	1.81	\$ 100	525	776.41	\$ 89,065	1.48	\$ 115
	PC	AMC BAMC-FSH	152	359.71	\$ 51,824	2.37	\$ 144	238	440.67	\$ 48,367	1.85	\$ 110
	PC	AF-H-633rd MEDGRP JBLE-LANGLEY	49	28.07	\$ 4,078	0.57	\$ 145	189	94.05	\$ 19,699	0.50	\$ 209
	PC	NH CAMP PENDLETON	126	241.91	\$ 27,027	1.92	\$ 112	146	224.66	\$ 25,378	1.54	\$ 113
	PC	AMC WOMACK-BRAGG	104	196.45	\$ 13,797	1.89	\$ 70	132	256.94	\$ 21,752	1.95	\$ 85
	PC	AF-C-9th MEDGRP-BEALE	7	2.36	\$ 411	0.34	\$ 174	130	96.76	\$ 13,535	0.74	\$ 140
	PC	AF-C-27th SPCLOPS MDGRP-CANNON	89	162.83	\$ 18,965	1.83	\$ 116	107	172.33	\$ 23,904	1.61	\$ 139
	PC	AF-C-55th MEDGRP-OFFUTT	30	82.41	\$ 12,672	2.75	\$ 154	100	119.44	\$ 17,495	1.19	\$ 146
	OBGYN	AMC BAMC-FSH	68	248.25	\$ 26,203	3.65	\$ 106	115	507.78	\$ 92,982	4.42	\$ 183
	MH	AMC EISENHOWER-GORDON	339	578.17	\$ 59,732	1.71	\$ 103	586	1,523.50	\$ 179,105	2.60	\$ 118
	MH	NH CAMP PENDLETON	111	263.87	\$ 30,593	2.38	\$ 116	407	508.10	\$ 53,871	1.25	\$ 106
	MH	AF-ASU-59th MDW-WHASC-LACKLAND	49	114.17	\$ 13,898	2.33	\$ 122	116	318.95	\$ 39,892	2.75	\$ 125
	OTHER	AMC EISENHOWER-GORDON	1,593	3,668.51	\$ 401,369	2.30	\$ 109	1,230	3,118.34	\$ 318,376	2.54	\$ 102
	OTHER	AF-ASU-59th MDW-WHASC-LACKLAND	326	1,507.06	\$ 118,356	4.62	\$ 79	891	3,229.72	\$ 328,823	3.62	\$ 102
	OTHER	NH CAMP PENDLETON	281	584.11	\$ 53,796	2.08	\$ 92	724	1,582.46	\$ 116,440	2.19	\$ 74
	OTHER	AMC BAMC-FSH	545	1,843.66	\$ 405,481	3.38	\$ 220	594	1,541.29	\$ 280,614	2.59	\$ 182
	OTHER	NMC CAMP LEJEUNE	60	158.84	\$ 11,978	2.65	\$ 75	168	395.93	\$ 51,387	2.36	\$ 130
	OTHER	KIMBROUGH AMB CAR CEN-MEADE	56	138.78	\$ 3,449	2.48	\$ 25	109	286.25	\$ 7,583	2.63	\$ 26
	OTHER	NHC CHERRY POINT	90	138.45	\$ 12,791	1.54	\$ 92	100	207.95	\$ 22,187	2.08	\$ 107
No Total			9,540	21,753.27	\$ 2,478,516	2.28	\$ 114	12,512	27,620.14	\$ 3,071,241	2.21	\$ 111
Total/Overall			70,263	103,564.53	\$ 13,163,820	1.47	\$ 127	74,802	117,503.77	\$ 14,774,974	1.57	\$ 126

Goodfellow – Prime Enrollment Ambulatory Care¹ – PURCHASED CARE

Product Line	2017					2018				
	# Svcs	Enh Total RVU	Amt Paid ²	Avg RVU	Paid ² / RVU	# Svcs	Enh Total RVU	Amt Paid ²	Avg RVU	Paid ² / RVU
PC	13,660	16,149.13	\$ 932,438	1.18	\$ 58	15,895	20,458.20	\$ 1,003,919	1.29	\$ 49
OBGYN	5,219	6,179.25	\$ 354,899	1.18	\$ 57	3,392	3,412.86	\$ 216,949	1.01	\$ 64
MH	8,836	9,551.09	\$ 617,329	1.08	\$ 65	13,758	9,628.93	\$ 770,571	0.70	\$ 80
OTHER	59,920	62,913.82	\$ 3,375,714	1.05	\$ 54	58,527	63,165.29	\$ 3,329,866	1.08	\$ 53
TOTAL	87,635	94,793.29	\$ 5,280,379	1.08	\$ 56	91,572	96,665.28	\$ 5,321,305	1.06	\$ 55

Goodfellow – Direct Care ER/Immed. Care (MEPRS BIA/BHI)¹

This facility did not report any workload in BIA or BHI.

Goodfellow – Direct Care ER/IC Disposition Code²

This facility did not report any workload in BIA or BHI.

Goodfellow – Direct Care ER/IC Top 15 Diagnosis Codes¹ (Reason for being seen)

This facility did not report any workload in BIA or BHI.

Pharmacy

Goodfellow – Direct Care Pharmacy¹ by Enrollment Group

PARENT 0364 AF-C-17th MEDGRP-GOODFELLOW										
Enr Group	2017					2018				
	# Scripts	Days Supply	Full Cost	Cost / Script	Cost / Day	# Scripts	Days Supply	Full Cost	Cost / Script	Cost / Day
Prime-MTF	56,281	2,393,986	\$ 1,796,055	\$ 32	\$ 0.75	56,071	2,329,511	\$ 1,781,331	\$ 32	\$ 0.76
Prime-MCSC	1,966	106,866	\$ 83,911	\$ 43	\$ 0.79	2,578	140,697	\$ 112,605	\$ 44	\$ 0.80
Reliant	1,033	24,476	\$ 18,525	\$ 18	\$ 0.76	1,120	21,300	\$ 20,806	\$ 19	\$ 0.98
Plus	4,494	293,064	\$ 149,537	\$ 33	\$ 0.51	4,343	296,334	\$ 189,020	\$ 44	\$ 0.64
Overseas Prime	1	84	\$ 65	\$ 65	\$ 0.77	6	211	\$ 178	\$ 30	\$ 0.84
Other	39,793	2,645,109	\$ 1,551,297	\$ 39	\$ 0.59	39,240	2,593,539	\$ 1,517,088	\$ 39	\$ 0.58
Grand Total	103,568	5,463,585	\$ 3,599,389	\$ 35	\$ 0.66	103,358	5,381,592	\$ 3,621,028	\$ 35	\$ 0.67

Goodfellow – Direct Care Pharmacy¹ by Enrollment Group

0364 AF-C-17th MEDGRP-GOODFELLOW										
Enr Group	2017					2018				
	# Scripts	Days Supply	Full Cost	Cost / Script	Cost / Day	# Scripts	Days Supply	Full Cost	Cost / Script	Cost / Day
Prime-MTF	56,281	2,393,986	\$ 1,796,055	\$ 32	\$ 0.75	56,071	2,329,511	\$ 1,781,331	\$ 32	\$ 0.76
Prime-MCSC	1,966	106,866	\$ 83,911	\$ 43	\$ 0.79	2,578	140,697	\$ 112,605	\$ 44	\$ 0.80
Reliant	1,033	24,476	\$ 18,525	\$ 18	\$ 0.76	1,120	21,300	\$ 20,806	\$ 19	\$ 0.98
Plus	4,494	293,064	\$ 149,537	\$ 33	\$ 0.51	4,343	296,334	\$ 189,020	\$ 44	\$ 0.64
Overseas Prime	1	84	\$ 65	\$ 65	\$ 0.77	6	211	\$ 178	\$ 30	\$ 0.84
Other	39,793	2,645,109	\$ 1,551,297	\$ 39	\$ 0.59	39,240	2,593,539	\$ 1,517,088	\$ 39	\$ 0.58
Grand Total	103,568	5,463,585	\$ 3,599,389	\$ 35	\$ 0.66	103,358	5,381,592	\$ 3,621,028	\$ 35	\$ 0.67

Goodfellow – FY18 Direct Care Pharmacy

Top 20 Products Dispensed¹ by # of Scripts and Cost/Day

0364 AF-C-17th MEDGRP-GOODFELLOW					
TOP 20 BASED ON VOLUME					
Product Name	Number of Scripts	Days Supply	Full Cost	Cost / script	Cost / Day
IBUPROFEN	3,182	46,612	\$ 37,529	\$ 12	\$ 0.81
CETIRIZINE HCL	2,914	199,236	\$ 36,991	\$ 13	\$ 0.19
SYNTHROID	2,148	176,028	\$ 36,950	\$ 17	\$ 0.21
FLUTICASONE PROPIONATE	2,054	112,549	\$ 33,893	\$ 17	\$ 0.30
LISINOPRIL	1,917	162,618	\$ 22,779	\$ 12	\$ 0.14
ATORVASTATIN CALCIUM	1,762	148,546	\$ 27,105	\$ 15	\$ 0.18
OMEPRAZOLE	1,544	124,256	\$ 26,028	\$ 17	\$ 0.21
MONTELUKAST SODIUM	1,518	128,461	\$ 32,234	\$ 21	\$ 0.25
SORE THROAT LOZENGE	1,471	4,421	\$ 16,972	\$ 12	\$ 3.84
SIMVASTATIN	1,439	124,223	\$ 20,143	\$ 14	\$ 0.16
MAPAP	1,434	10,425	\$ 15,261	\$ 11	\$ 1.46
SUDOGEST	1,375	6,882	\$ 14,082	\$ 10	\$ 2.05
ASPIRIN EC	1,311	114,684	\$ 14,018	\$ 11	\$ 0.12
ONDANSETRON ODT	1,267	7,266	\$ 21,738	\$ 17	\$ 2.99
TRAMADOL HCL	1,259	23,056	\$ 16,813	\$ 13	\$ 0.73
GABAPENTIN	1,217	74,434	\$ 27,101	\$ 22	\$ 0.36
PANTOPRAZOLE SODIUM	994	79,661	\$ 20,787	\$ 21	\$ 0.26
LORATADINE	993	63,251	\$ 12,011	\$ 12	\$ 0.19
FEXOFENADINE HCL	932	62,244	\$ 22,607	\$ 24	\$ 0.36
MUCINEX	924	15,053	\$ 14,835	\$ 16	\$ 0.99

0364 AF-C-17th MEDGRP-GOODFELLOW					
TOP 20 BASED ON COST PER DAY					
Product Name	Number of Scripts	Days Supply	Full Cost	Cost / script	Cost / Day
STELARA	6	286	\$ 39,218	\$ 6,536	\$ 137.13
TECFIDERA	2	60	\$ 8,106	\$ 4,053	\$ 135.10
ESBRIET	10	303	\$ 39,507	\$ 3,951	\$ 130.39
AVONEX PEN	8	240	\$ 27,715	\$ 3,464	\$ 115.48
SYMAX-SL	3	75	\$ 7,912	\$ 2,637	\$ 105.49
SYNAGIS	4	120	\$ 6,885	\$ 1,721	\$ 57.37
ALBENDAZOLE	4	17	\$ 877	\$ 219	\$ 51.58
TRIUMEQ	4	360	\$ 16,613	\$ 4,153	\$ 46.15
GENVOYA	1	90	\$ 4,107	\$ 4,107	\$ 45.64
XIFAXAN	13	374	\$ 12,269	\$ 944	\$ 32.80
CIMZIA	1	90	\$ 2,775	\$ 2,775	\$ 30.83
TRUVADA	23	930	\$ 27,414	\$ 1,192	\$ 29.48
PLAN B ONE-STEP	17	17	\$ 416	\$ 24	\$ 24.49
NORDITROPIN FLEXPRO	1	45	\$ 904	\$ 904	\$ 20.08
TAMIFLU	286	1,733	\$ 34,291	\$ 120	\$ 19.79
ALBENZA	34	585	\$ 11,119	\$ 327	\$ 19.01
OSELTAMIVIR PHOSPHATE	13	105	\$ 1,804	\$ 139	\$ 17.18
XELODA	1	90	\$ 1,482	\$ 1,482	\$ 16.47
PENTASA	1	90	\$ 1,464	\$ 1,464	\$ 16.27
ENBREL	34	1,020	\$ 16,414	\$ 483	\$ 16.09

Goodfellow – Purchased Care Pharmacy¹ based on “Parent” PRISM Area ID by Enrollment Group

PARENT PRISM 0364 AF-C-17th MEDGRP-GOODFELLOW											
Source System	Enrollment Group	2017					2018				
		# Scripts	Days Supply	Paid by TRICARE	Paid / Script	Paid / Day	# Scripts	Days Supply	Paid by TRICARE	Paid / Script	Paid / Day
MCSC (Retail)	Prime-MTF	8,463	176,702	\$ 702,596	\$ 83	\$ 3.98	9,142	188,469	\$ 720,405	\$ 79	\$ 3.82
	Prime-MCSC	1,636	44,610	\$ 99,248	\$ 61	\$ 2.22	1,865	49,433	\$ 214,566	\$ 115	\$ 4.34
	Reliant	34	700	\$ 872	\$ 26	\$ 1.25	41	638	\$ 1,082	\$ 26	\$ 1.70
	Plus	914	26,186	\$ 27,727	\$ 30	\$ 1.06	740	21,020	\$ 25,007	\$ 34	\$ 1.19
	Other	24,195	721,588	\$ 1,746,923	\$ 72	\$ 2.42	23,192	706,926	\$ 1,301,739	\$ 56	\$ 1.84
MCSC Total		35,242	969,786	\$ 2,577,366	\$ 73	\$ 2.66	34,980	966,486	\$ 2,262,798	\$ 65	\$ 2.34
Mail Order	Prime-MTF	1,198	94,276	\$ 426,267	\$ 356	\$ 4.52	1,140	91,414	\$ 424,375	\$ 372	\$ 4.64
	Prime-MCSC	648	55,670	\$ 79,353	\$ 122	\$ 1.43	556	44,826	\$ 103,974	\$ 187	\$ 2.32
	Plus	326	26,399	\$ 49,915	\$ 153	\$ 1.89	267	21,920	\$ 85,872	\$ 322	\$ 3.92
	Other	14,264	1,211,070	\$ 2,150,084	\$ 151	\$ 1.78	13,220	1,105,305	\$ 2,055,710	\$ 156	\$ 1.86
Mail Order Total		16,436	1,387,415	\$ 2,705,619	\$ 165	\$ 1.95	15,183	1,263,465	\$ 2,669,931	\$ 176	\$ 2.11
Grand Total		51,678	2,357,201	\$ 5,282,985	\$ 102	\$ 2.24	50,163	2,229,951	\$ 4,932,730	\$ 98	\$ 2.21

Goodfellow – Purchased Care Pharmacy¹ based on PRISM Area ID by Enrollment Group

0364 AF-C-17th MEDGRP-GOODFELLOW											
Source System	Enrollment Group	2017					2018				
		# Scripts	Days Supply	Paid by TRICARE	Paid / Script	Paid / Day	# Scripts	Days Supply	Paid by TRICARE	Paid / Script	Paid / Day
MCSC (Retail)	Prime-MTF	8,463	176,702	\$ 702,596	\$ 83	\$ 3.98	9,142	188,469	\$ 720,405	\$ 79	\$ 3.82
	Prime-MCSC	1,636	44,610	\$ 99,248	\$ 61	\$ 2.22	1,865	49,433	\$ 214,566	\$ 115	\$ 4.34
	Reliant	34	700	\$ 872	\$ 26	\$ 1.25	41	638	\$ 1,082	\$ 26	\$ 1.70
	Plus	914	26,186	\$ 27,727	\$ 30	\$ 1.06	740	21,020	\$ 25,007	\$ 34	\$ 1.19
	Other	24,195	721,588	\$ 1,746,923	\$ 72	\$ 2.42	23,192	706,926	\$ 1,301,739	\$ 56	\$ 1.84
MCSC Total		35,242	969,786	\$ 2,577,366	\$ 73	\$ 2.66	34,980	966,486	\$ 2,262,798	\$ 65	\$ 2.34
Mail Order	Prime-MTF	1,198	94,276	\$ 426,267	\$ 356	\$ 4.52	1,140	91,414	\$ 424,375	\$ 372	\$ 4.64
	Prime-MCSC	648	55,670	\$ 79,353	\$ 122	\$ 1.43	556	44,826	\$ 103,974	\$ 187	\$ 2.32
	Plus	326	26,399	\$ 49,915	\$ 153	\$ 1.89	267	21,920	\$ 85,872	\$ 322	\$ 3.92
	Other	14,264	1,211,070	\$ 2,150,084	\$ 151	\$ 1.78	13,220	1,105,305	\$ 2,055,710	\$ 156	\$ 1.86
Mail Order Total		16,436	1,387,415	\$ 2,705,619	\$ 165	\$ 1.95	15,183	1,263,465	\$ 2,669,931	\$ 176	\$ 2.11
Grand Total		51,678	2,357,201	\$ 5,282,985	\$ 102	\$ 2.24	50,163	2,229,951	\$ 4,932,730	\$ 98	\$ 2.21

Goodfellow – FY18 Purchased Care Pharmacy¹

Top 20 Products Dispensed by # of Scripts and Cost/Day

0364 AF-C-17th MEDGRP-GOODFELLOW					
TOP 20 BASED ON VOLUME					
Product Name	Number of Scripts	Days Supply	Paid by TRICARE	Paid / Script	Paid / Day
LEVOTHYROXINE SODIUM	1,256	78,837	\$ 5,423	\$ 4	\$ 0.07
HYDROCODONE-ACETAMINOPHEN	1,117	19,623	\$ 14,167	\$ 13	\$ 0.72
ATORVASTATIN CALCIUM	960	68,737	\$ 62,415	\$ 65	\$ 0.91
LISINOPRIL	887	57,519	\$ 732	\$ 1	\$ 0.01
AMOXICILLIN	868	7,812	\$ 290	\$ 0	\$ 0.04
TRAMADOL HCL	787	15,411	\$ 10,622	\$ 13	\$ 0.69
ACETAMINOPHEN-CODEINE	706	7,290	\$ 3,227	\$ 5	\$ 0.44
GABAPENTIN	676	34,770	\$ 21,808	\$ 32	\$ 0.63
PREDNISONE	670	13,197	\$ 667	\$ 1	\$ 0.05
FUROSEMIDE	651	39,675	\$ 7,797	\$ 12	\$ 0.20
MONTELUKAST SODIUM	632	39,305	\$ 3,925	\$ 6	\$ 0.10
AZITHROMYCIN	617	3,019	\$ 947	\$ 2	\$ 0.31
OMEPRAZOLE	608	42,206	\$ 9,421	\$ 15	\$ 0.22
AMLODIPINE BESYLATE	567	37,464	\$ 10,200	\$ 18	\$ 0.27
PANTOPRAZOLE SODIUM	535	34,463	\$ 55,344	\$ 103	\$ 1.61
AMOXICILLIN-CLAVULANATE POT	489	4,511	\$ 1,946	\$ 4	\$ 0.43
CARVEDILOL	480	30,646	\$ 7,179	\$ 15	\$ 0.23
SERTRALINE HCL	465	24,508	\$ 823	\$ 2	\$ 0.03
SIMVASTATIN	435	33,196	\$ 25,791	\$ 59	\$ 0.78
OSELTAMIVIR PHOSPHATE	397	2,329	\$ 24,705	\$ 62	\$ 10.61

0364 AF-C-17th MEDGRP-GOODFELLOW					
TOP 20 BASED ON COST PER DAY					
Product Name	Number of Scripts	Days Supply	Paid by TRICARE	Paid / Script	Paid / Day
JAKAFI	5	150	\$ 59,278	\$ 11,856	\$ 395.19
IBRANCE	8	238	\$ 90,830	\$ 11,354	\$ 381.64
IMBRUVICA	1	30	\$ 11,168	\$ 11,168	\$ 372.26
TRACLEER	5	150	\$ 52,191	\$ 10,438	\$ 347.94
STIVARGA	4	112	\$ 38,363	\$ 9,591	\$ 342.53
SKLICE	3	3	\$ 998	\$ 333	\$ 332.74
LETAIRIS	12	360	\$ 110,013	\$ 9,168	\$ 305.59
THALOMID	24	672	\$ 184,036	\$ 7,668	\$ 273.86
ZYTIGA	29	915	\$ 236,775	\$ 8,165	\$ 258.77
ERIVEDGE	3	84	\$ 20,677	\$ 6,892	\$ 246.15
DIFICID	3	30	\$ 6,700	\$ 2,233	\$ 223.34
ZOSTAVAX	3	3	\$ 593	\$ 198	\$ 197.57
VOTRIENT	2	60	\$ 11,297	\$ 5,649	\$ 188.29
GARDASIL 9	1	1	\$ 186	\$ 186	\$ 186.17
XTANDI	30	930	\$ 171,945	\$ 5,731	\$ 184.89
HARVONI	6	168	\$ 31,000	\$ 5,167	\$ 184.53
SPRYCEL	11	495	\$ 90,105	\$ 8,191	\$ 182.03
METHERGINE	1	2	\$ 343	\$ 343	\$ 171.50
XERMELO	13	308	\$ 50,136	\$ 3,857	\$ 162.78
MENOPUR	1	2	\$ 321	\$ 321	\$ 160.68

Radiology

Goodfellow – Direct Care Radiology¹ Services by Ordering Product Line and Enrollment Category

0364 AF-C-17th MEDGRP-GOODFELLOW							
FY 2017 RADIOLOGY SERVICES							
Ordering Product Line	Prime - Site	Reliant	Prime - Other	Plus	TFL	Not Enrolled	Total
Special Programs	2					8	10
Optometry	6	2					8
Orthopedics	34						34
Primary Care	3,516	194	76	2	52	54	3,894
Other	12		2			2	16
Total	3,570	196	78	2	52	64	3,962

0364 AF-C-17th MEDGRP-GOODFELLOW							
FY 2018 RADIOLOGY SERVICES							
Ordering Product Line	Prime - Site	Reliant	Prime - Other	Plus	TFL	Not Enrolled	Total
Ancillary						2	2
Special Programs	8				2		10
Optometry	4						4
Orthopedics	36						36
Primary Care	3,194	180	64	2	28	54	3,522
Other	94	2	2			4	102
Total	3,336	182	66	2	30	60	3,676

Goodfellow – FY18 Direct Care Top 20 Radiology Procedures¹ by Number of Services and Cost/Svc

0364 AF-C-17th MEDGRP-GOODFELLOW						
TOP 20 RADIOLOGY PROCEDURES BY VOLUME						
Procedure Code	Description	FY 2018				
		# of Svcs	Total RVU	Full Cost	Avg RVU	Cost / Svc
71046	RADIOLOGIC EXAM,CHEST;2 VIEWS	482	202.44	\$ 27,884	0.42	\$ 57.85
71020	RAD EXM,CHEST,2,FRONTAL & LAT;	420	161.70	\$ 22,273	0.39	\$ 53.03
73630	RAD EXM,FOOT;COMP, MIN 3 VIEWS	348	140.57	\$ 19,362	0.40	\$ 55.64
73610	RAD EXAM,ANK;COMP,MIN 3 VIEWS	286	124.41	\$ 17,137	0.44	\$ 59.92
73562	RADIOLOGIC EXAM, KNEE; 3 VIEWS	272	134.64	\$ 18,546	0.50	\$ 68.19
73560	RADIOLOGIC EXAM,KNEE;1/2 VIEWS	208	89.23	\$ 12,291	0.43	\$ 59.09
73130	RAD EXAM, HAND; MIN OF 3 VIEWS	174	75.72	\$ 10,431	0.44	\$ 59.95
73110	RAD EXM,WRIST;COMP,MIN 3 VIEWS	172	83.66	\$ 11,524	0.49	\$ 67.00
73590	RAD EXM;TIBIA & FIBULA,2 VIEWS	168	66.36	\$ 9,141	0.40	\$ 54.41
73030	RAD EXM,SHLDR;COMP,MIN 2 VIEW	128	51.63	\$ 7,112	0.40	\$ 55.56
73140	RAD EXAM,FINGER(S),MIN 2 VIEWS	96	42.46	\$ 5,849	0.44	\$ 60.92
73502	RAD EXAM,HIP,UNILAT;2-3 VIEWS	70	40.25	\$ 5,544	0.58	\$ 79.21
74018	RADIOLOG EXAM,ABDOMEN;1 VIEW	70	26.25	\$ 3,616	0.38	\$ 51.66
72070	RAD EXM,SPINE;THORACIC,2 VIEWS	68	31.96	\$ 4,402	0.47	\$ 64.74
72040	RADLOG EXM,SPIN,CERV;2/3 VIEWS	66	30.29	\$ 4,172	0.46	\$ 63.22
73660	RAD EXM;TOE(S),MIN OF 2 VIEWS	66	25.61	\$ 3,528	0.39	\$ 53.45
73080	RAD EXM,ELBOW;COMP,MIN 3 VIEWS	62	26.90	\$ 3,705	0.43	\$ 59.76
74000	X-RAY EXAM OF ABDOMEN	56	18.20	\$ 2,507	0.33	\$ 44.77
72050	RAD EXAM,SPINE,CERV; 4/5 VIEWS	52	32.50	\$ 4,477	0.63	\$ 86.09
72110	RAD EXM,SPINE,LUMBO;MIN 4 VIEW	44	29.70	\$ 4,091	0.68	\$ 92.98

0364 AF-C-17th MEDGRP-GOODFELLOW						
TOP 20 RADIOLOGY PROCEDURES BY COST/SVC						
Procedure Code	Description	FY 2018				
		# of Svcs	Total RVU	Full Cost	Avg RVU	Cost / Svc
72110	RAD EXM,SPINE,LUMBO;MIN 4 VIEW	44	29.70	\$ 4,091	0.68	\$ 92.98
70330	X-RAY EXAM OF JAW JOINTS	6	3.93	\$ 541	0.66	\$ 90.23
71111	RAD EXM,RIB,BILAT;POSTER,MIN 4	12	7.83	\$ 1,079	0.65	\$ 89.88
70260	RAD EXM,SKULL;COMP,MIN 4 VIEWS	4	2.52	\$ 347	0.63	\$ 86.78
72050	RAD EXAM,SPINE,CERV; 4/5 VIEWS	52	32.50	\$ 4,477	0.63	\$ 86.09
74022	RADIO EXAM ABDM,SNGL VIEW CHST	10	6.15	\$ 847	0.62	\$ 84.72
70200	RAD EXM;ORBITS,COMP,MIN 4 VIEW	2	1.18	\$ 163	0.59	\$ 81.27
71048	RADIOLOG EXAM,CHEST;4/+ VIEWS	2	1.16	\$ 160	0.58	\$ 79.90
70150	RAD EXM,FACE BONES;COMP, MIN 3	2	1.15	\$ 158	0.58	\$ 79.21
71030	RAD EXM,CHEST,COMP,MIN 4 VIEWS	2	1.15	\$ 158	0.58	\$ 79.21
73502	RAD EXAM,HIP,UNILAT;2-3 VIEWS	70	40.25	\$ 5,544	0.58	\$ 79.21
73564	RAD EXAM, KNEE; COMP, 4+ VIEWS	8	4.40	\$ 606	0.55	\$ 75.76
70110	RAD EXM,MANDIB;COMP,MIN 4 VIEW	2	1.05	\$ 145	0.53	\$ 72.32
70220	RAD EXM,SIN,PARANAS,COMP,MIN 3	2	1.04	\$ 143	0.52	\$ 71.63
73521	RAD EXAM,HIPS,BILAT;2 VIEWS	42	21.84	\$ 3,008	0.52	\$ 71.63
71101	RAD EXM,RIB,UNIL;POSTERO,MIN 3	42	21.65	\$ 2,982	0.52	\$ 71.01
74020	X-RAY EXAM OF ABDOMEN	22	11.33	\$ 1,561	0.52	\$ 70.94
70250	RADIOLOGIC EXM,SKULL;< 4 VIEWS	2	1.00	\$ 138	0.50	\$ 68.88
73562	RADIOLOGIC EXAM, KNEE; 3 VIEWS	272	134.64	\$ 18,546	0.50	\$ 68.19
73050	X-RAY EXAM OF SHOULDERS	8	3.94	\$ 543	0.49	\$ 67.84

Goodfellow – Purchased Care Radiology¹ Services by Product Line² and Enrollment Category

0364 AF-C-17th MEDGRP-GOODFELLOW PARENT PRISM AREA							
FY 2017 RADIOLOGY SERVICES							
Product Line	Prime - Site	Reliant	Prime - Other	Plus	TFL	Not Enrolled	Total
Inpatient	420	1	65		1,372	164	2,022
Anesth	45		3		36	15	99
ENT	2		1		33	2	38
ER	1,851	29	189	2	1,909	359	4,339
Facility	1,806	7	120		1,004	201	3,138
Home	5		1			4	10
IMSub	100		4		160	16	280
MH	49	1	1		10	13	74
OBGYN	637		18		12	86	753
Optom	14		1		98	3	116
Ortho	342	2	28		411	86	869
PC	330	4	60		1,940	129	2,463
Rad	3,408	13	231		1,986	680	6,318
Surg	2				3		5
SurgSub	69	1	8		378	13	469
Other	8		1		34		43
None	163		4		41	8	216
Total	9,251	58	735	2	9,427	1,779	21,252

0364 AF-C-17th MEDGRP-GOODFELLOW PARENT PRISM AREA							
FY 2018 RADIOLOGY SERVICES							
Product Line	Prime - Site	Reliant	Prime - Other	Plus	TFL	Not Enrolled	Total
Inpatient	315	1	127		1,135	104	1,682
Anesth	39		4		13	3	59
Derm					2		2
ENT	1				12	2	15
ER	1,888	43	243		1,808	380	4,362
Facility	1,974	7	181		1,330	332	3,824
Home	30		1				31
IMSub	77		14		183	22	296
MH	43		5		7	19	74
OBGYN	133		12		12	19	176
Optom	10		3		47	2	62
Ortho	248		33		345	49	675
PC	250		48		1,466	126	1,890
Path	27		5		133	4	169
Rad	3,293	16	355		2,294	697	6,655
Surg	14		2		12	1	29
SurgSub	211		17		274	50	552
Other	7				1		8
None	87		1		33		121
Total	8,647	67	1,051	0	9,107	1,810	20,682

Goodfellow – FY18 Purchased Care Top 20 Radiology Procedures¹ by Number of Services and Paid/Svc

0364 AF-C-17th MEDGRP-GOODFELLOW PARENT PRISM AREA						
TOP 20 RADIOLOGY PROCEDURES BY VOLUME						
Procedure Code	Description	FY 2018				
		Number of Services	Enhanced Total RVU	Amount Paid ²	Avg RVU	Paid ² / Svc
71045	RADIOLOG EXM,CHEST;SINGLE VIEW	1,338	298.90	\$ 17,461	0.22	\$ 13.05
71046	RADIOLOGIC EXAM,CHEST;2 VIEWS	1,219	537.48	\$ 21,605	0.44	\$ 17.72
70450	CT HEAD/BRAIN W/O CONTST MATRL	1,049	1,234.04	\$ 55,984	1.18	\$ 53.37
77067	SCRN MAMMOG,BILAT,CAD WHN PERF	664	1,292.09	\$ 47,412	1.95	\$ 71.40
74177	CT,ABDOM & PELV;W CONTRAST MAT	631	1,793.91	\$ 86,647	2.84	\$ 137.32
73721	MRI,JNT,LOW EXT;WO CNTRST MAT	487	733.63	\$ 66,018	1.51	\$ 135.56
71020	RAD EXM,CHEST,2,FRONTAL & LAT;	476	172.08	\$ 7,994	0.36	\$ 16.79
71010	CHEST X-RAY	474	112.35	\$ 5,553	0.24	\$ 11.72
72148	MAGNETIC IMAGE, LUMBAR SPINE	433	878.72	\$ 45,739	2.03	\$ 105.63
73630	RAD EXM,FOOT;COMP, MIN 3 VIEWS	429	294.62	\$ 8,182	0.69	\$ 19.07
74176	CT,ABDOM & PELV;WO CONTRAS MAT	391	826.89	\$ 41,255	2.11	\$ 105.51
73030	RAD EXM,SHLDR;COMP,MIN 2 VIEW	366	231.95	\$ 5,792	0.63	\$ 15.82
76830	US EXAM, TRANSVAGINAL	320	470.77	\$ 28,065	1.47	\$ 87.70
76700	US,ABDM,REAL TME W IMG DOC;CMP	316	352.83	\$ 17,666	1.12	\$ 55.90
73560	RADIOLOGIC EXAM,KNEE;1/2 VIEWS	302	202.81	\$ 4,360	0.67	\$ 14.44
73221	MRI,JOINT,UP EXTRM;WO CONT MAT	297	511.24	\$ 36,309	1.72	\$ 122.25
74018	RADIOLOG EXAM,ABDOMEN;1 VIEW	297	99.00	\$ 3,245	0.33	\$ 10.92
76536	US,SOFT TISS HEAD/NCK	284	319.53	\$ 17,907	1.13	\$ 63.05
76705	US,ABDM,REAL TME W IMG DOC;LTD	274	214.39	\$ 14,966	0.78	\$ 54.62
72100	RAD EXM,SPINE,LUMBO; 2/3 VIEWS	273	176.56	\$ 5,340	0.65	\$ 19.56

0364 AF-C-17th MEDGRP-GOODFELLOW PARENT PRISM AREA						
TOP 20 RADIOLOGY PROCEDURES BY PAID/SVC						
Procedure Code	Description	FY 2018				
		Number of Services	Enhanced Total RVU	Amount Paid ²	Avg RVU	Paid ² / Svc
77385	IMRT DELIVERY,GUID&TRAC;SIMPLE	15	148.80	\$ 21,824	9.92	\$ 1,454.95
77386	IMRT DELIVER,GUID&TRAC;COMPLEX	21	165.07	\$ 26,439	7.86	\$ 1,258.99
76498	UNLIST MAGNET RESONACE PROC	1	2.53	\$ 483	2.53	\$ 482.82
70546	MAG RES ANG,HEAD;WO,W CONT MAT	1	13.59	\$ 482	13.59	\$ 481.73
72270	MYELOG,2+ REG,RAD SUPVIS & INT	1	0.00	\$ 467	0.00	\$ 466.88
78816	PET W CONCUR ACQ CT;WHOLE BODY	4	30.59	\$ 1,803	7.65	\$ 450.73
77301	RADIOTHERAPY DOS PLAN, IMRT	29	744.46	\$ 11,232	25.67	\$ 387.31
73722	MAG RES IMG,ANY JT,LW EXT;W CM	2	2.23	\$ 770	1.12	\$ 385.01
72157	MAGNETIC IMAGE, CHEST SPINE	15	61.26	\$ 5,456	4.08	\$ 363.73
73220	MRI UPRR EXTREMITY W/O&W DYE	5	14.02	\$ 1,765	2.80	\$ 353.05
78099	ENDOCRINE NUCLEAR PROCEDURE	1	0.00	\$ 347	0.00	\$ 347.41
72156	MAGNETIC IMAGE, NECK SPINE	17	67.50	\$ 5,626	3.97	\$ 330.94
73222	MRI JOINT UPR EXTREM W/ DYE	20	47.53	\$ 6,414	2.38	\$ 320.71
75561	CARD MRI WO CONT,FOL CONT& SEQ	2	3.53	\$ 636	1.77	\$ 317.83
76825	ECHO EXAM OF FETAL HEART	4	31.24	\$ 1,193	7.81	\$ 298.27
77373	STEREOTACTIC RAD TRMT DELIVERY	8	307.60	\$ 2,328	38.45	\$ 291.03
73223	MRI JOINT UPR EXTR W/O&W DYE	64	104.43	\$ 17,808	1.63	\$ 278.25
70543	MRI/ORB/FCE/NCK;WO CONT,FL SEQ	30	137.06	\$ 8,274	4.57	\$ 275.79
73723	MAG RES IM,ANY JT,LW EXT;WO CM	27	61.56	\$ 7,084	2.28	\$ 262.37
78018	THYROID MET IMAGING, BODY	6	3.40	\$ 1,482	0.57	\$ 247.08

Laboratory

Goodfellow – Direct Care Laboratory¹ Services by Ordering Product Line and Enrollment Category

0364 AF-C-17th MEDGRP-GOODFELLOW							
FY 2017 LABORATORY SERVICES							
Ordering Product Line	Prime - Site	Reliant	Prime - Other	Plus	TFL	Not Enrolled	Total
Dental	36						36
Ancillary	6					8	14
Special Programs	1,592	76	60		117	39	1,884
Mental Health	66		1				67
OB/GYN	5,213	73	64		17	56	5,423
Optometry	230	10	4				244
Orthopedics	215	2	2				219
Primary Care	24,039	748	272	5	1,470	479	27,013
Other	88		1			3	264
TOTAL	31,485	909	404	5	1,607	754	35,164

0364 AF-C-17th MEDGRP-GOODFELLOW							
FY 2018 LABORATORY SERVICES							
Ordering Product Line	Prime - Site	Reliant	Prime - Other	Plus	TFL	Not Enrolled	Total
Dental	21						21
Ancillary						230	230
Special Programs	1,013	8	61		56	26	1,164
Mental Health	55	5	11				71
OB/GYN	4,779	88	100		44	41	5,052
Optometry	135	5	1				141
Orthopedics	72	2					74
Primary Care	23,471	945	398		1,244	543	26,601
Other	490	4	9		14	462	979
TOTAL	30,036	1,057	580	0	1,358	1,302	34,333

Goodfellow – FY18 Direct Care Top 20 Laboratory Procedures¹ by Number of Services and Cost/Svc

0364 AF-C-17th MEDGRP-GOODFELLOW						
TOP 20 LABORATORY PROCEDURES BY VOLUME						
Procedure Code	Description	FY 2018				
		# of Svcs	Total RVU	Full Cost	Avg RVU	Cost / Svc
85025	COMPLETE CBC W/AUTO DIFF WBC	2,096	668.29	\$ 52,732	0.32	\$ 25.16
80053	COMPREHENSIVE METABOLIC PANEL	1,837	3,078.59	\$ 242,909	1.68	\$ 132.23
80061	LIPID PANEL	1,704	1,648.08	\$ 130,035	0.97	\$ 76.31
87389	INF ANT;HIV-1,HIV-1&2 AB,SNGL	1,533	76.65	\$ 6,040	0.05	\$ 3.94
83037	HGB;GLYCOSYLAT,HOME USE	1,501	75.05	\$ 5,914	0.05	\$ 3.94
84443	ASSAY THYROID STIM HORMONE	1,427	71.35	\$ 5,622	0.05	\$ 3.94
84703	CHORIONIC GONADOTROPIN ASSAY	1,065	283.74	\$ 22,384	0.27	\$ 21.02
81001	URINALYSIS, AUTO W/SCOPE	1,024	115.76	\$ 9,135	0.11	\$ 8.92
82306	VITAMIN D, 25 HYDROXY	997	49.85	\$ 3,928	0.05	\$ 3.94
83721	LIPOPROT,DRCT MEAS;LDL CHLSTRL	953	314.49	\$ 24,816	0.33	\$ 26.04
87491	CHYLM D TRACH, DNA, AMP PROBE	847	42.35	\$ 3,337	0.05	\$ 3.94
87591	N.GONORRHOEAE, DNA, AMP PROB	847	42.35	\$ 3,337	0.05	\$ 3.94
87880	STREP A ASSAY W/OPTIC	805	370.30	\$ 29,213	0.46	\$ 36.29
84439	ASSAY OF FREE THYROXINE	740	37.00	\$ 2,916	0.05	\$ 3.94
81003	URINALYSIS, AUTO, W/O SCOPE	700	57.36	\$ 4,524	0.08	\$ 6.46
87070	CULT,BACT;SOURC EXC URIN/BLD	698	213.90	\$ 16,877	0.31	\$ 24.18
82607	VITAMIN B-12	668	33.40	\$ 2,632	0.05	\$ 3.94
82746	BLOOD FOLIC ACID SERUM	668	33.40	\$ 2,632	0.05	\$ 3.94
87804	INFLUENZA ASSAY W/OPTIC	639	293.94	\$ 23,189	0.46	\$ 36.29
87086	CULT,BACT;QUANTIT COLONY COUNT	557	160.46	\$ 12,660	0.29	\$ 22.73

0364 AF-C-17th MEDGRP-GOODFELLOW						
TOP 20 LABORATORY PROCEDURES BY COST/SVC						
Procedure Code	Description	FY 2018				
		# of Svcs	Total RVU	Full Cost	Avg RVU	Cost / Svc
80053	COMPREHENSIVE METABOLIC PANEL	1,837	3,078.59	\$ 242,909	1.68	\$ 132.23
80069	RENAL FUNCTION PANEL	27	31.10	\$ 2,454	1.15	\$ 90.88
80061	LIPID PANEL	1,704	1,648.08	\$ 130,035	0.97	\$ 76.31
80048	BASIC METABOL PANEL (CA,TOTAL)	385	363.29	\$ 28,663	0.94	\$ 74.45
80076	HEPATIC FUNCTION PANEL	272	247.14	\$ 19,498	0.91	\$ 71.69
80320	ALCOHOLS	40	26.98	\$ 2,129	0.67	\$ 53.22
80051	ELECTROLYTE PANEL	3	1.65	\$ 130	0.55	\$ 43.39
82552	ASSAY OF CPK IN BLOOD	100	46.03	\$ 3,631	0.46	\$ 36.31
87804	INFLUENZA ASSAY W/OPTIC	639	293.94	\$ 23,189	0.46	\$ 36.29
87880	STREP A ASSAY W/OPTIC	805	370.30	\$ 29,213	0.46	\$ 36.29
83718	ASSAY OF LIPOPROTEIN	2	0.92	\$ 73	0.46	\$ 36.29
87177	OVA AND PARASITES SMEARS	1	0.34	\$ 27	0.34	\$ 26.83
83721	LIPOPROT,DRCT MEAS;LDL CHLSTRL	953	314.49	\$ 24,816	0.33	\$ 26.04
84478	ASSAY OF TRIGLYCERIDES	1	0.33	\$ 26	0.33	\$ 26.04
85025	COMPLETE CBC W/AUTO DIFF WBC	2,096	668.29	\$ 52,732	0.32	\$ 25.16
87186	MICROBE SUSCEPTIBLE, MIC	97	29.73	\$ 2,346	0.31	\$ 24.18
87070	CULT,BACT;SOURC EXC URIN/BLD	698	213.90	\$ 16,877	0.31	\$ 24.18
87086	CULT,BACT;QUANTIT COLONY COUNT	557	160.46	\$ 12,660	0.29	\$ 22.73
87077	CULT,BAC;AEROBIC,ADD ID,EA ISO	48	13.44	\$ 1,060	0.28	\$ 22.09
84703	CHORIONIC GONADOTROPIN ASSAY	1,065	283.74	\$ 22,384	0.27	\$ 21.02

Goodfellow – Purchased Care Laboratory¹ Services by Product Line² and Enrollment Category

0364 AF-C-17th MEDGRP-GOODFELLOW PARENT PRISM AREA							
FY 2017 LABORATORY SERVICES							
Product Line	Prime - Site	Reliant	Prime - Other	Plus	TFL	Not Enrolled	Total
Inpatient	106		2		197	32	337
Anesth	3		7		1	3	14
Derm	118		1		25	32	176
ENT	526		1			97	624
ER	179	2	28		126	92	427
Facility	2,965	8	655		342	1,516	5,486
Home	9		2			15	26
IMSub	5,538	187	259		138	1,490	7,612
MH	272	7	5		6	44	334
OBGYN	1,661		10		24	408	2,103
Optom					9	2	11
Ortho	76	7			4	14	101
PC	2,506	5	539	1	1,578	2,466	7,095
Path	1,599	7	92		1,400	374	3,472
Surg	266		75		9	4	354
SurgSub	614	6	40		594	181	1,435
Other	2						2
None	726		169		352	513	1,760
Total	17,166	229	1,885	1	4,805	7,283	31,369

0364 AF-C-17th MEDGRP-GOODFELLOW PARENT PRISM AREA							
FY 2018 LABORATORY SERVICES							
Product Line	Prime - Site	Reliant	Prime - Other	Plus	TFL	Not Enrolled	Total
Inpatient	1,440	8	358		169	781	2,756
Anesth	2		9			4	15
Derm	153				38	64	255
ENT	540		52		9	102	703
ER	2,428	51	208		108	425	3,220
Facility	1,819	2	904		519	1,114	4,358
Home	106		3			6	115
IMSub	3,453		358		258	1,313	5,382
MH	117		23		8	57	205
OBGYN	1,235	1	78		25	381	1,720
Optom	84		51		2	47	184
Ortho	93		7		5	24	129
PC	3,425	11	825		2,136	2,916	9,313
Path	1,935	4	206		1,691	412	4,248
Rad	3						3
Surg	454		52		20	16	542
SurgSub	519	1	70		699	192	1,481
Other	2						2
None	2,377	2	157		104	829	3,469
Total	20,185	80	3,361	0	5,791	8,683	38,100

Goodfellow – FY18 Purchased Care Top 20 Laboratory Procedures¹ by Number of Services and Paid/Svc

0364 AF-C-17th MEDGRP-GOODFELLOW PARENT PRISM AREA						
TOP 20 LABORATORY PROCEDURES BY VOLUME						
Procedure Code	Description	FY 2018				
		Number of Services	Enhanced Total RVU	Amount Paid ²	Avg RVU	Paid ² / Svc
88305	LEV IV-SRG PATH,GROS&MICRO EXM	2,144	2,873.14	\$ 62,229	1.34	\$ 29.02
86003	ALLERG SPEC IGE;QUANT/SEMI,EA	2,044	377.20	\$ 14,338	0.18	\$ 7.01
87804	INFLUENZA ASSAY W/OPTIC	2,015	926.90	\$ 31,691	0.46	\$ 15.73
80053	COMPREHENSIVE METABOLIC PANEL	1,846	675.12	\$ 25,055	0.37	\$ 13.57
85025	COMPLETE CBC W/AUTO DIFF WBC	1,704	465.45	\$ 17,758	0.27	\$ 10.42
87880	STREP A ASSAY W/OPTIC	1,134	520.72	\$ 18,917	0.46	\$ 16.68
80061	LIPID PANEL	1,007	539.08	\$ 15,008	0.54	\$ 14.90
81000	URINALYSIS, NONAUTO W/SCOPE	984	110.76	\$ 1,384	0.11	\$ 1.41
84443	ASSAY THYROID STIM HORMONE	781	461.00	\$ 15,985	0.59	\$ 20.47
81001	URINALYSIS, AUTO W/SCOPE	738	82.94	\$ 3,140	0.11	\$ 4.25
83036	HEMOGLOBIN; GLYCOSYLATED (A1C)	721	243.59	\$ 7,981	0.34	\$ 11.07
87086	CULT,BACT;QUANTIT COLONY COUNT	634	181.96	\$ 5,887	0.29	\$ 9.29
85027	COMPLETE CBC, AUTOMATED	612	137.97	\$ 5,036	0.23	\$ 8.23
84439	ASSAY OF FREE THYROXINE	608	192.00	\$ 6,611	0.32	\$ 10.87
85610	PROTHROMBIN TIME	596	80.21	\$ 1,947	0.13	\$ 3.27
82962	GLUCOSE BLOOD TEST	581	52.29	\$ 2,101	0.09	\$ 3.62
82306	VITAMIN D, 25 HYDROXY	497	516.59	\$ 17,457	1.04	\$ 35.12
80050	GENERAL HEALTH PANEL	460	604.53	\$ 22,213	1.31	\$ 48.29
83735	ASSAY OF MAGNESIUM	399	94.17	\$ 3,697	0.24	\$ 9.26
80048	BASIC METABOL PANEL (CA,TOTAL)	397	118.40	\$ 4,645	0.30	\$ 11.70

0364 AF-C-17th MEDGRP-GOODFELLOW PARENT PRISM AREA						
TOP 20 LABORATORY PROCEDURES BY PAID/SVC						
Procedure Code	Description	FY 2018				
		Number of Services	Enhanced Total RVU	Amount Paid ²	Avg RVU	Paid ² / Svc
81229	CYTO CON MICROAR ANAL;COPY&SNP	3	64.44	\$ 10,918	21.48	\$ 3,639.42
81408	MOLECULAR PATHOLOGY PROC, LV 9	1	55.56	\$ 2,444	55.56	\$ 2,444.25
81211	BRCA1,2 GEN ANAL;FUL,COM,BRCA1	4	260.82	\$ 7,483	65.21	\$ 1,870.80
81406	MOLECULAR PATHOLOGY PROC,LEV 7	2	15.72	\$ 2,932	7.86	\$ 1,466.18
81405	MOLECULAR PATHOLOGY PROC,LEV 6	2	16.74	\$ 2,192	8.37	\$ 1,096.10
81403	MOLECULAR PATHOLOGY PROC,LEV 4	3	15.42	\$ 2,403	5.14	\$ 801.13
81528	ONC(COLOREC),QUANT,10 DNA MARK	6	84.98	\$ 3,704	14.16	\$ 617.41
87633	INF AGNT DET,NA;RESP,12-25 TAR	2	28.58	\$ 1,219	14.29	\$ 609.34
87507	INF AGNT,DNA/RNA;GI,12-25 TARG	3	44.51	\$ 1,789	14.84	\$ 596.32
81220	CFTR GENE ANAL;COMMON VARIANTS	2	0.00	\$ 1,130	0.00	\$ 565.00
81243	FMR1 GENE ANAL;DET ABN ALLELES	3	3.16	\$ 1,495	1.05	\$ 498.38
81213	BRCA1,2 GEN ANAL;UNCOM DUP/DEL	4	62.41	\$ 1,801	15.60	\$ 450.34
81170	ABL1,GENE ANAL,VAR,KINASE DOM	1	9.25	\$ 430	9.25	\$ 430.43
81401	MOLECULAR PATHOLOGY PROC,LEV 2	3	7.62	\$ 1,243	2.54	\$ 414.33
81301	MICRSAT INSTAB ANAL,MISMAT REP	1	11.07	\$ 412	11.07	\$ 412.19
81402	MOLECULAR PATHOLOGY PROC,LEV 3	1	4.18	\$ 396	4.18	\$ 395.50
86152	CELL ENUM,IMM SEL &ID,FLD SPEC	3	26.25	\$ 1,168	8.75	\$ 389.30
81121	IDH2, COMMON VARIANTS	1	8.22	\$ 362	8.22	\$ 361.75
80055	OBSTETRIC PANEL	6	10.98	\$ 1,787	1.83	\$ 297.77
88356	ANALYSIS, NERVE	2	12.36	\$ 575	6.18	\$ 287.34

Staffing

Goodfellow – Staffing¹

All MEPRS Codes, No Limitation on Skill Type

Assigned FTEs

Tmt Parent DMIS ID	Tmt DMIS ID	Tmt DMIS ID Name	2017					2018				
			CIV	CON	MIL	OTH	TOTAL	CIV	CON	MIL	OTH	TOTAL
0364	0364	AF-C-17th MEDGRP-GOODFELLOW	39.6		106.7		146.3	38.2		101.9		140.1
	7210	AF-D-17th DENTL FLT-GOODFELLOW	1.0		18.7		19.7	0.8		19.4		20.2
0364 Total			40.6	0.0	125.4	0.0	166.0	39.0	0.0	121.3	0.0	160.3

Available FTEs

Tmt Parent DMIS ID	Tmt DMIS ID	Tmt DMIS ID Name	2017					2018				
			CIV	CON	MIL	OTH	TOTAL	CIV	CON	MIL	OTH	TOTAL
0364	0364	AF-C-17th MEDGRP-GOODFELLOW	33.0	21.9	98.2	1.1	154.2	31.9	28.1	98.1	1.1	159.2
	7210	AF-D-17th DENTL FLT-GOODFELLOW	0.8	0.9	13.2		15.0	0.6	0.8	12.7		14.1
0364 Total			33.9	22.8	111.5	1.1	169.2	32.5	28.9	110.7	1.1	173.2

Goodfellow – Staffing (Available FTEs)¹

MEPRS B

0364 AF-C-17th MEDGRP-GOODFELLOW											
Skill Type	Skill Type and Suffix Desc	2017					2018				
		CIV	CON	MIL	OTH	TOTAL	CIV	CON	MIL	OTH	TOTAL
1D	DENTIST			0.0		0.0					0.0
1P	PHYSICIAN	0.7	0.2	3.7		4.6	0.8	0.6	4.4		5.8
1R	RESIDENT-MEDICAL					0.0					0.0
2N	NURSE PRACTITIONER			1.6		1.6			1.7		1.7
2P	PHYSICIAN ASSISTANT		0.1	2.9		3.0		0.9	2.4		3.3
2Z	ALL OTHERS IN SKILL TYPE 2	1.2	0.9	3.2		5.3	2.5	1.7	2.5		6.7
3R	REGISTERED NURSE	2.2	3.3	0.3		5.8	2.2	2.6	0.3		5.2
3Z	ALL OTHERS IN SKILL TYPE 3		0.3			0.3		0.9			0.9
4L	LPN/LVN	0.8				0.8	0.8				0.8
4W	STUDENT-NON GME/GDE			1.2		1.2			1.6		1.6
4Z	ALL OTHERS IN SKILL TYPE 4		2.4	17.2		19.6		1.9	17.3		19.2
5A	ADMINISTRATORS	0.2				0.2					0.0
5C	CLERICAL			0.9		0.9	0.2	0.0	0.4		0.6
5W	STUDENT-NON GME/GDE					0.0					0.0
5Z	ALL OTHERS IN SKILL TYPE 5	0.8		0.6		1.4	0.7	0.6	0.3		1.6
Grand Total		5.9	7.3	31.5	0.0	44.7	7.1	9.3	30.8	0.0	47.3

Goodfellow – Staffing (Available FTEs)¹

All MEPRS

0364 AF-C-17th MEDGRP-GOODFELLOW											
Skill Type	Skill Type and Suffix Desc	2017					2018				
		CIV	CON	MIL	OTH	TOTAL	CIV	CON	MIL	OTH	TOTAL
1D	DENTIST			1.1		1.1			1.5		1.5
1P	PHYSICIAN	0.7	0.2	6.1		7.0	0.9	0.6	5.8		7.2
1R	RESIDENT-MEDICAL					0.0			0.0		0.0
1U	RESIDENT-DENTAL			0.0		0.0			0.1		0.1
2N	NURSE PRACTITIONER			2.3		2.3			2.0		2.0
2P	PHYSICIAN ASSISTANT		0.2	3.2		3.4		0.9	2.6		3.5
2W	STUDENT-NON GME/GDE					0.0			0.0		0.0
2Z	ALL OTHERS IN SKILL TYPE 2	3.2	1.5	8.8		13.5	3.7	2.7	7.7		14.1
3R	REGISTERED NURSE	5.8	4.7	0.8		11.3	4.8	3.0	1.2		9.0
3Z	ALL OTHERS IN SKILL TYPE 3		0.3	1.1		1.4		0.9	1.2		2.1
4A	NURSING ASSISTANT			0.0		0.0					0.0
4L	LPN/LVN	0.8		0.0		0.8	0.8				0.8
4W	STUDENT-NON GME/GDE			1.4		1.4			2.0		2.0
4Z	ALL OTHERS IN SKILL TYPE 4	4.3	2.6	36.0		42.9	3.6	2.3	36.5		42.5
5A	ADMINISTRATORS	2.3	2.7	6.8		11.7	1.6	2.5	6.3		10.4
5C	CLERICAL	3.6	6.7	12.9	1.1	24.3	4.6	8.4	13.2	1.1	27.3
5L	LOGISTICS		2.9	3.2		6.1		6.2	3.3		9.5
5M	MEDICAL RECORD AUDITOR/CODER	0.6				0.6	0.7				0.7
5W	STUDENT-NON GME/GDE			1.5		1.5			1.5		1.5
5Z	ALL OTHERS IN SKILL TYPE 5	11.8		12.9		24.7	11.3	0.6	13.0		24.9
Grand Total		33.0	21.9	98.2	1.1	154.2	31.9	28.1	98.1	1.1	159.2

7210 AF-D-17th DENTL FLT-GOODFELLOW											
Skill Type	Skill Type and Suffix Desc	2017					2018				
		CIV	CON	MIL	OTH	TOTAL	CIV	CON	MIL	OTH	TOTAL
1D	DENTIST			3.0		3.0			1.8		1.8
1U	RESIDENT-DENTAL					0.0			0.7		0.7
4A	NURSING ASSISTANT			0.0		0.0					0.0
4L	LPN/LVN			0.0		0.0					0.0
4W	STUDENT-NON GME/GDE			1.0		1.0			1.6		1.6
4Z	ALL OTHERS IN SKILL TYPE 4	0.8	0.9	9.2		11.0	0.6	0.8	8.6		10.0
Grand Total		0.8	0.9	13.2	0.0	15.0	0.6	0.8	12.7	0.0	14.1

Goodfellow – Skill Type 1P (Physician) by DoD Occupation Code¹ (Available FTEs)

0364 AF-C-17th MEDGRP-GOODFELLOW											
DoD Occ Code		2017					2018				
		CIV	CON	MIL	OTH	TOTAL	CIV	CON	MIL	OTH	TOTAL
260109	GENERAL MEDICINE			0.8		0.8			0.8		0.8
260111	FAMILY PRACTICE	0.7		1.2		1.9	0.8		1.3		2.1
260116	OCCUPATIONAL MEDICINE			0.0		0.0			0.0		0.0
260121	PEDIATRICS, GENERAL			1.0		1.0			0.8		0.8
260151	AVIATION/AEROSPACE MEDICINE, RESIDENCY TRAINED OTH		0.2	0.1		0.4		0.6	0.7		1.3
260152	AVIATION/AEROSPACE MEDICINE NON-RESIDENCY TRAINED			0.6		0.6			0.8		0.8
TOTAL		0.7	0.2	3.7	0.0	4.6	0.8	0.6	4.4	0.0	5.8

¹ Source: M2 MEPRS Personnel Detail. Based on Child DMIS ID.

Eligible Population and Enrollment

Goodfellow – Eligibles and Enrollees¹ by PRISM and Enrollment Site (Child)

PRISM (for Elig) / Enrollment Site (for Enr)		FY	Eligibles					Prime and Plus Enrolled				
			ADFM	RET	OTHER ²	AD	TOTAL	ADFM	RET	OTHER ²	AD	TOTAL
0364	AF-C-17th MEDGRP-GOODFELLOW	2014	2,829	1,960	3,020	3,387	11,196	2,263	864	1,377	4,199	8,703
0364	AF-C-17th MEDGRP-GOODFELLOW	2015	2,624	1,934	2,983	2,982	10,523	2,149	826	1,304	3,687	7,967
0364	AF-C-17th MEDGRP-GOODFELLOW	2016	2,513	1,933	2,955	3,246	10,647	2,131	835	1,284	4,333	8,582
0364	AF-C-17th MEDGRP-GOODFELLOW	2017	2,481	1,901	2,891	3,229	10,501	2,132	822	1,265	4,254	8,473
0364	AF-C-17th MEDGRP-GOODFELLOW	2018	2,501	1,863	2,886	3,318	10,567	2,111	783	1,258	4,611	8,762

Goodfellow – Eligibles¹ by PRISM Area ID

0364 AF-C-17th MEDGRP-GOODFELLOW										
Gender by Age Group										
Gender	FY	0-4	5-14	15-17	18-24	25-34	35-44	45-64	65+	Total
Female	2014	369	579	148	840	773	410	879	1,029	5,028
	2015	343	586	140	747	733	405	844	1,031	4,828
	2016	328	579	125	756	759	386	821	1,027	4,781
	2017	309	568	122	722	776	388	802	1,045	4,731
	2018	341	558	115	800	761	398	780	1,044	4,796
Male	2014	383	659	166	1,679	1,028	462	866	925	6,168
	2015	357	590	168	1,460	935	421	833	932	5,694
	2016	366	570	166	1,669	925	400	830	941	5,866
	2017	371	563	153	1,612	924	409	809	928	5,770
	2018	394	558	131	1,620	944	414	789	922	5,771
Total	2014	752	1,237	314	2,520	1,801	873	1,746	1,954	11,196
	2015	700	1,177	308	2,206	1,667	826	1,677	1,963	10,523
	2016	694	1,149	291	2,425	1,684	786	1,652	1,968	10,647
	2017	681	1,131	275	2,334	1,699	797	1,612	1,973	10,501
	2018	735	1,116	246	2,420	1,705	811	1,569	1,966	10,567

0364 AF-C-17th MEDGRP-GOODFELLOW						
Gender by Ben Cat Common						
Gender	FY	ADFM	RET	OTHER	AD	Total
Female	2014	1,780	124	2,422	702	5,028
	2015	1,688	129	2,386	625	4,828
	2016	1,587	132	2,379	683	4,781
	2017	1,538	141	2,345	708	4,731
	2018	1,565	141	2,323	767	4,796
Male	2014	1,049	1,836	598	2,685	6,168
	2015	935	1,805	597	2,357	5,695
	2016	927	1,801	575	2,563	5,866
	2017	943	1,760	545	2,521	5,770
	2018	936	1,722	563	2,550	5,771
Total	2014	2,829	1,960	3,020	3,387	11,196
	2015	2,624	1,934	2,983	2,982	10,523
	2016	2,513	1,933	2,955	3,246	10,647
	2017	2,481	1,901	2,891	3,229	10,501
	2018	2,501	1,863	2,886	3,318	10,567

Update History

- ❑ Version 1: New portfolio template. Direct Care costs for FY13 are based on FY13 MEPRS expenses; FY14 is based on FY13 MEPRS with inflation factors applied. May 2015.
- ❑ Version 2: Updated FY14 data; added FY15 data; added Pharmacy, Radiology, and Laboratory data; added additional views of eligible data; added Ambulatory Surgery Top 20 Procedures. FY14 Direct Care Costs are based on FY14 MEPRS expenses; FY15 Direct Care Costs are based on FY14 MEPRS with inflation factors applied. March 2016.
- ❑ Version 3: Updated FY15 data; added FY16 data; added Appointment Data. FY15 Direct Care Costs are based on FY15 MEPRS expenses; FY16 Direct Care Costs are based on FY15 MEPRS with inflation factors applied. March 2017.
- ❑ Version 4: Updated FY16 data; added FY17 data. FY16 Direct Care Costs are based on FY16 MEPRS expenses; FY17 Direct Care Costs are based on FY16 MEPRS with inflation factors applied. March 2018.
- ❑ Version 5: Updated FY17 data; added FY18 data. FY17 Direct Care Costs are based on FY17 MEPRS expenses; FY18 Direct Care Costs are based on FY17 MEPRS with inflation factors applied. March 2019.