

The TRICARE®

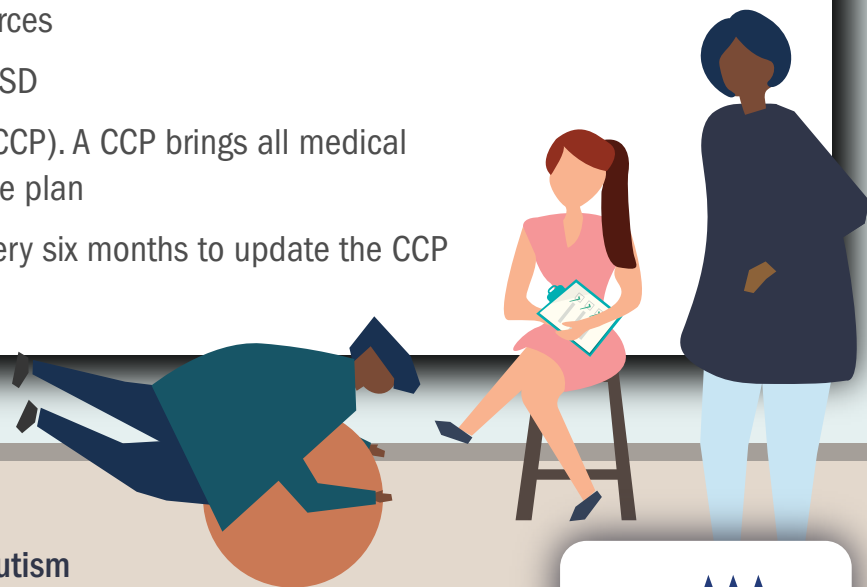
# Autism Care Demonstration

## What is an Autism Service Navigator?

An Autism Service Navigator (ASN) provides care coordination and support to you and your family. The ASN helps link families with both medical and non-medical resources.

### The ASN will:

- Make contact with you once a referral to the Autism Care Demonstration (ACD) or Applied Behavior Analysis (ABA) services has been placed
- Coordinate services like medical, MTF, ECHO, respite, ABA, and parent-mediated programs, etc.
- Ensure all services work in collaboration to achieve successful outcomes
- Coordinate and participate in medical team conferences
- Help with continuity of care if your family moves, retires, or a treating provider is unavailable
- Connect families with local-level resources
- Provide educational resources about ASD
- Develop a Comprehensive Care Plan (CCP). A CCP brings all medical and non-medical services into one care plan
- Connect with families at least once every six months to update the CCP



For more information, visit: [www.TRICARE.mil/Autism](http://www.TRICARE.mil/Autism)

