

USSOCOM Command Surgeon



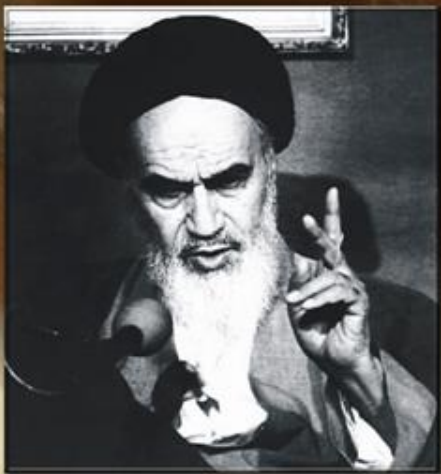
SOF Medicine Overview

UNITED STATES SPECIAL OPERATIONS COMMAND



- History
- Mission
- The SOF Team
- SOF Truths
- SOF Medicine
- Questions

DESERT ONE



“It was risky and we knew it, but it had a good chance of success and America had the courage to try.” (Holloway Report). Eight Airmen and Marines died, eight aircraft were lost and American Hostages spent an additional 244 days in captivity.

National Defense Authorization Act of 1986



Established the U.S. Special Operations Command (USSOCOM) and the Office of the Assistant Secretary of Defense for Special Operations Low Intensity Conflict and Interdependent Capabilities ASD (SOLIC-IC)

UNCLASSIFIED

Unified Commands



SECRETARY OF DEFENSE

CJCS

SERVICE CHIEFS



U.S. STRATEGIC COMMAND



U.S. CYBER COMMAND



U.S. TRANSPORTATION COMMAND



U.S. Special Operations Command

U.S. PACIFIC COMMAND



U.S. NORTHERN COMMAND



U.S. SOUTHERN COMMAND



U.S. EUROPEAN COMMAND



U.S. CENTRAL COMMAND



U.S. AFRICA COMMAND



FUNCTIONAL COMMAND

GEOGRAPHIC COMMAND

A Unique Command



A Combatant Command

- Command of all SOF
- Synchronize planning for global operations against terrorist networks
- Deploy SOF to support GCCs
- As directed, conduct operations globally
- Plan & execute pre-crisis activities

...with legislated Military Department-like authorities

- Organize, train, equip SOF
- Develop SOF strategy, doctrine, and tactics
- Program and budget for SOF
- RDT&E / Procure SOF-peculiar equipment
- Monitor management of SOF personnel
- Ensure interoperability
- Conduct internal audits



SOF Mission and Vision



Mission

Synchronize the planning of special operations and provide SOF to support persistent, networked, and distributed Geographic Combatant Command (GCC) operations to protect and advance our nation's interests.

Vision

SOF provides strategic options for our national leaders and the GCCs we support through a Global Network that fully integrates our military, interagency, and international partners.



SOF Core Activities & Operations

- Counter-proliferation of WMD
- Counterterrorism
- Special Reconnaissance
- Direct Action
- Unconventional Warfare
- Foreign Internal Defense
- Civil Affairs Operations
- Information Operations
- Psychological Operations
- Security Force Assistance
- Counterinsurgency Operations
- Activities Specified by the President or SECDEF



The SOF Team



U.S. Special Operations Command



United States Army Special Operations Command (USASOC)

Naval Special Warfare Command (NAVSPECWARCOM)

Air Force Special Operations Command (AFSOC)

Marine Corps Special Operations Command (MARSOC)

Joint Special Operations Command (JSOC)



FT BRAGG, NC
SPECIAL FORCES RANGERS
 AVIATION
 MISO
 CIVIL AFFAIRS
JFK SPECIAL WARFARE CENTER



NAB CORONADO, CA
 SEAL TEAMS
 SPECIAL BOAT TEAMS
 SEAL DELIVERY VEHICLE TEAMS
NAVAL SPECIAL WARFARE CENTER



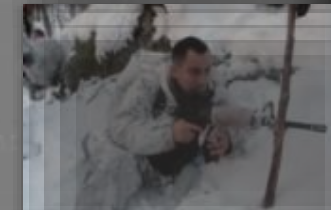
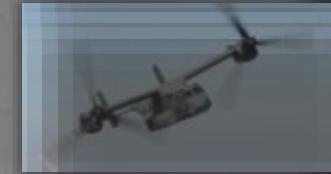
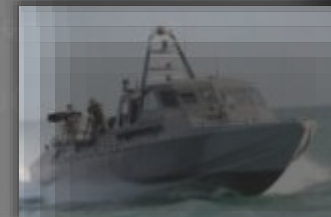
HURLBURT AFB, FL
 AVIATION - FIXED WING & VERTICAL LIFT
 SPECIAL TACTICS
 AVIATION FID
 ISR/PED
AIR FORCE SPECIAL OPERATIONS SCHOOL



CAMP LEJEUNE, NC
MARINE SPECIAL OPERATIONS COMPANIES
MARINE SPECIAL OPERATIONS ADVISORY GROUP
MARINE SPECIAL OPERATIONS SUPPORT GROUP
MARINE SPECIAL OPERATIONS SCHOOL



FT BRAGG, NC
JOINT STANDING DEVELOPMENT, TRAINING AND EXERCISES





Theater Special Operations Commands (TSOCs)



SOF Truths



- Humans are more important than hardware
- Quality is better than quantity
- Special Operations Forces cannot be mass produced
- Competent Special Operations Forces cannot be created after emergencies occur
- **Most SOF operations require non-SOF support**

SOF Priorities

Ensure SOF Readiness

“The right people, skills, and capabilities...now and in the future”

Help Our Nation Win

“Addressing today’s challenges and keeping the Nation Safe”

Continue to Build Relationships

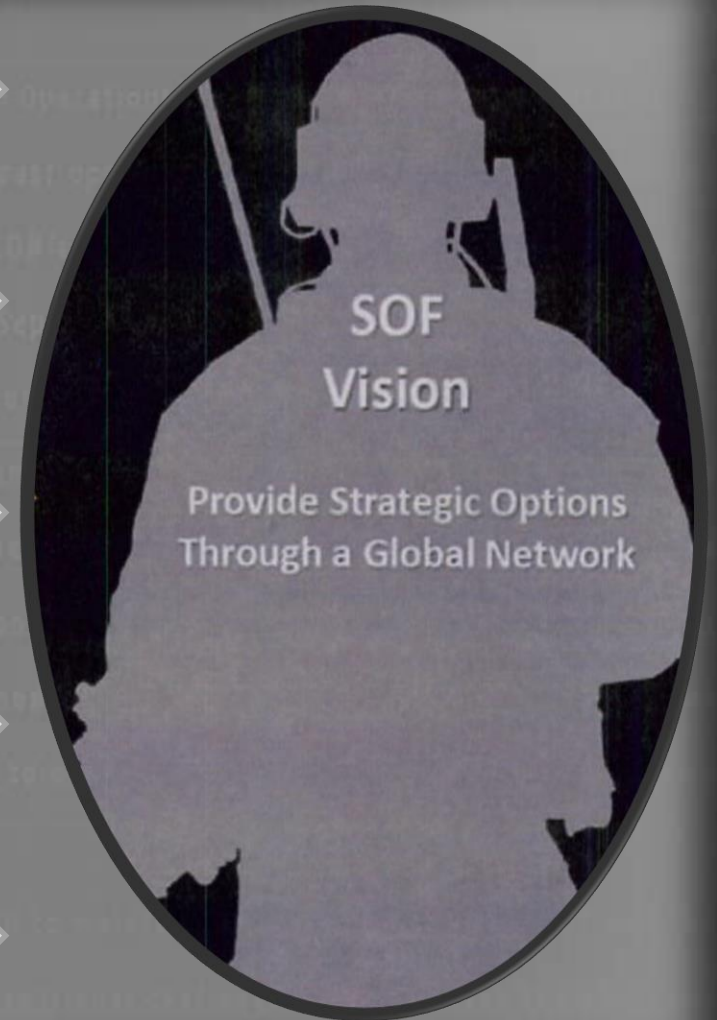
“Global Understanding and awareness that creates options”

Prepare for the Future

“SOF ready to win in an increasing complex world”

Preserve Our Force and Families

“Short and long-term well-being of our SOF Warriors and their Families”



The SOF Operator

12% of our Operators are Minorities

1.6% of our Operators are Women

4 deployments on average

31 is the average Enlisted age

34 is the average Officer age

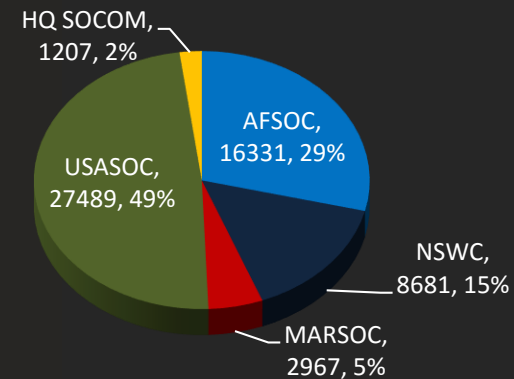
13 year average TIS Officer

11 year average TIS Enlisted

1.3 average dependent

12.7 years of Education Enlisted

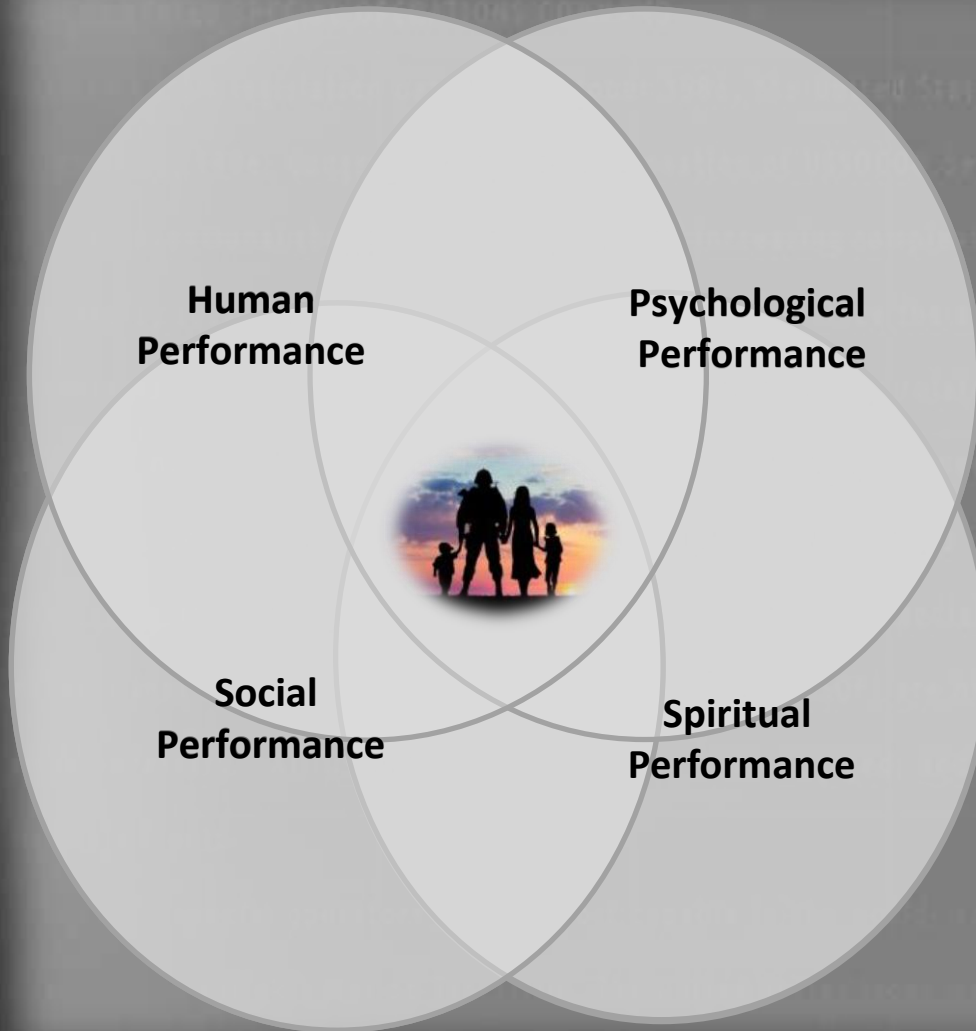
16.5 years of Education Officer



56,675 total military assigned to SOCOM Enterprise



POTFF Lines of Effort



Strength and Conditioning

Advanced Rehabilitation

Sleep Hygiene

Cognitive processing

Assessment & Selection

Post-deployment and periodic assessment

Immediate, proximate care/consultation

Integration of family into all aspects of care

SOF unique family programs

Specialized pastoral teams

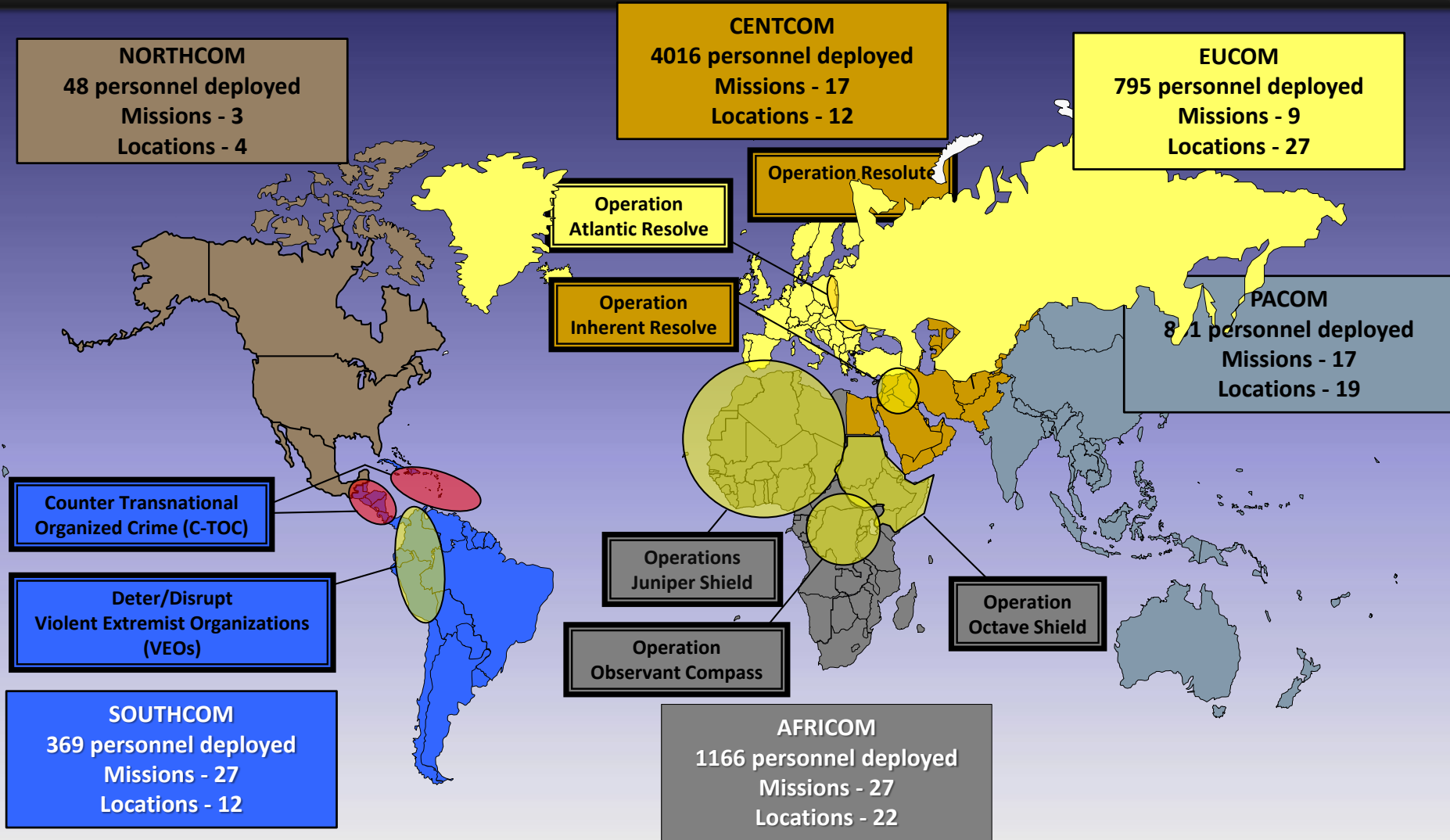
Responsive and knowledgeable staff

Predictability



7245 SOF deployed to 89 countries,
2 territories and 3 locations afloat.

10/30/2015





Command Surgeon

Mission:

Advocate and synchronize Joint Health Service Support and innovation through persistent engagement.

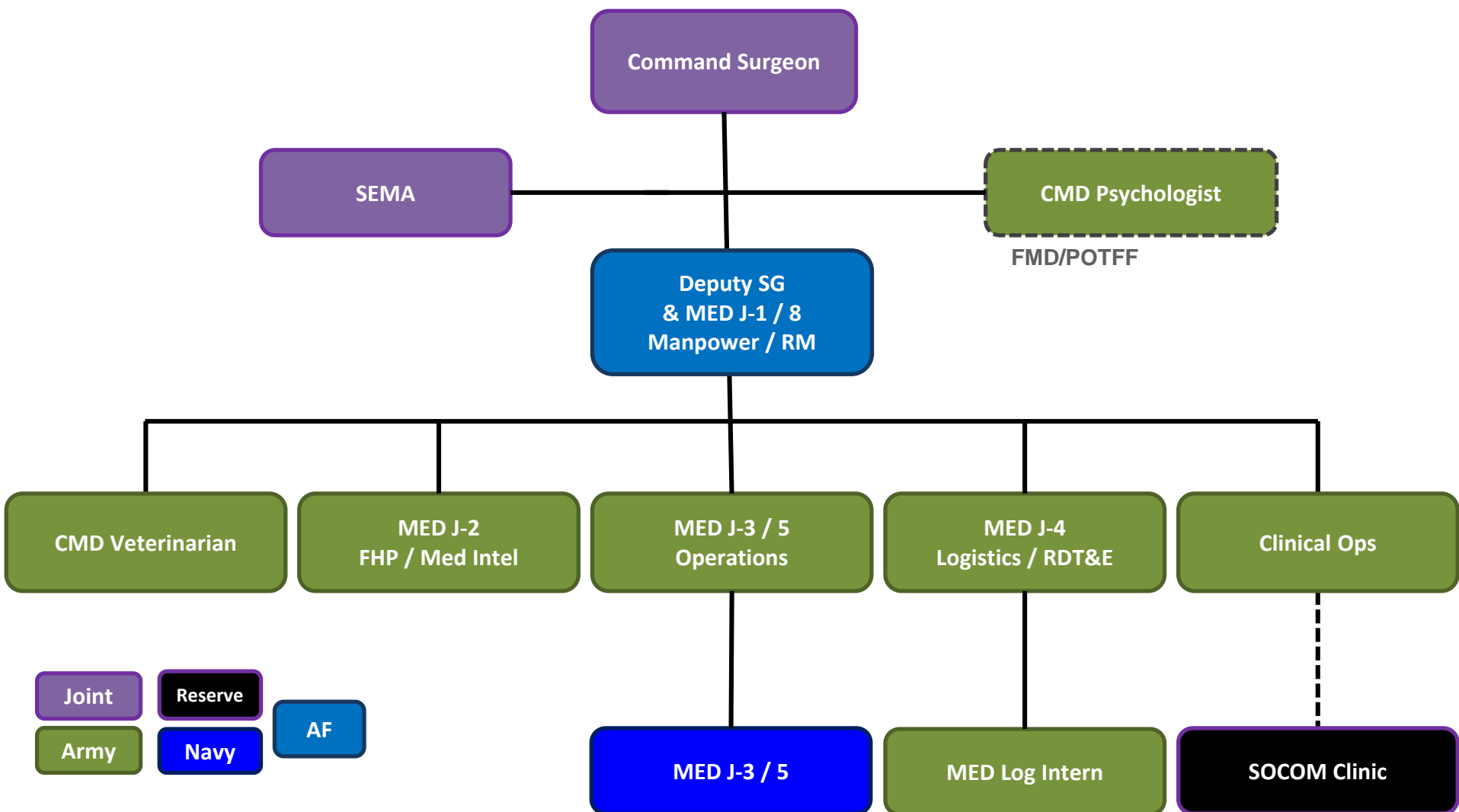
Vision:

Global SOF Network that provides World Class Health Services.





Command Surgeon Organization





SOF Medical Planning Considerations

- **Isolated, austere environments; immature theaters; distributed operations; extended LOCs**
- **Quick strike or protracted missions**
- **Missions may be sensitive & highly classified**
- **Limited organic medical assets (beyond Role 1 care)**
- **Evacuation requirements (Military & Contract)**
- **Host Nation Hospital use (HN vs US standard of care)**
- **Forward surgical capability (right-sized and responsive)**
- **Blood support**
- **Force Health Protection and biosurveillance**
- **Medical logistics challenges**
- **Veterinary support**



USSOCOM Medical Enterprise Challenges

- **Reliance on Service medical structure not optimized to support SOF operations**
- **Extreme distances and austere environments**
- **Application of the “golden hour” standard**
- **Full mission profile medical simulation (MEDSIM) limitations**
- **SOF lacks the ability to perform real-time environmental analysis**
- **Embedded Health Service Support-Needs Standardized Service Acceptance**
- **Service Specific Readiness, Credentialing, and Training Requirements. No Joint Standard.**



USSOCOM Medical Enterprise Opportunities

- **SOF peculiar research focused on TCCC and Prolonged Field Care**
- **Advanced Tactical Paramedic Certification Program of Record**
- **Global Biosurveillance Portal (G-BSP); integration and expansion**
- **MEDSIM and training.**
- **Expand Freeze Dried Plasma availability**
- **DVBIC Collaboration-USSOCOM DVBIC/Intrepid Initiative.**
- **MRT Study: POTFF collaboration now active research protocol for PTS and awaiting final IRB approval for TBI.**
- **Broad Collaboration with DHA, OSD-HA, USUHS, DVBIC, VA, Academia to tackle SOF Specific data collection, surveillance, and data storage.**
- **DARPA collaboration**
- **CNRM/SOF Brain Tissue Repository**



Global SOF Medical Network

Policy

Intra-Agency

International Partnering



Research & Development

Academia

Civilian Medicine

Questions?

