



**Defense Center of Excellence (DCoE)
National Intrepid Center of Excellence (NICoE)
for Psychological Health / Traumatic Brain Injury**

Presentation for the Defense Health Board

COL Angel L. Lugo, FACHE

Chief of Staff

23 April 08



Agenda



- Overview
- DCoE Introduction
 - Vision / Mission
 - Organization
 - Milestones
- NCoE Introduction
 - Vision / Mission
 - Organization
 - Milestones
- Summary/Discussion
- Way Ahead



Overview

Health Affairs (HA)

- PH/TBI strategy, plans, policy and compliance
- Responsible for overall DoD plan for addressing PH/TBI

Defense Center of Excellence (DCoE)

- Coordination/collaboration
- Standards of care
- Full spectrum holistic focus
- Research/telehealth

Military Community and Family Policy

- Responsible for DoD Quality of Life policy and program oversight
- Provides policy and management direction for education programs

National Intrepid Center of Excellence (NICoE)

- Family centered approach
- Evaluation and diagnosis
- Training and education
- Research/clinical partners
- Follow-up and outcomes



Defense Center of Excellence (DCoE) Introduction



- **History:** Various task forces, Presidential, and independent committees proposed over 300 recommendations to address Psychological Health (PH) and Traumatic Brain Injury (TBI) issues in wounded Warriors. Congress provided \$900M to meet requirements for PH/TBI.
- **Purpose:** DCoE was established in response to these recommendations to maintain focus on PH/TBI health issues in Service members and their families.
- **Funding:** DCoE operations will be sustained through FY 2008 and FY 2009 supplemental funding, and FY 2010-15 POM.
- **Staffing:** DCoE staffing will be from the military Services, GS / Contract personnel; and Federal / Civilian partnerships



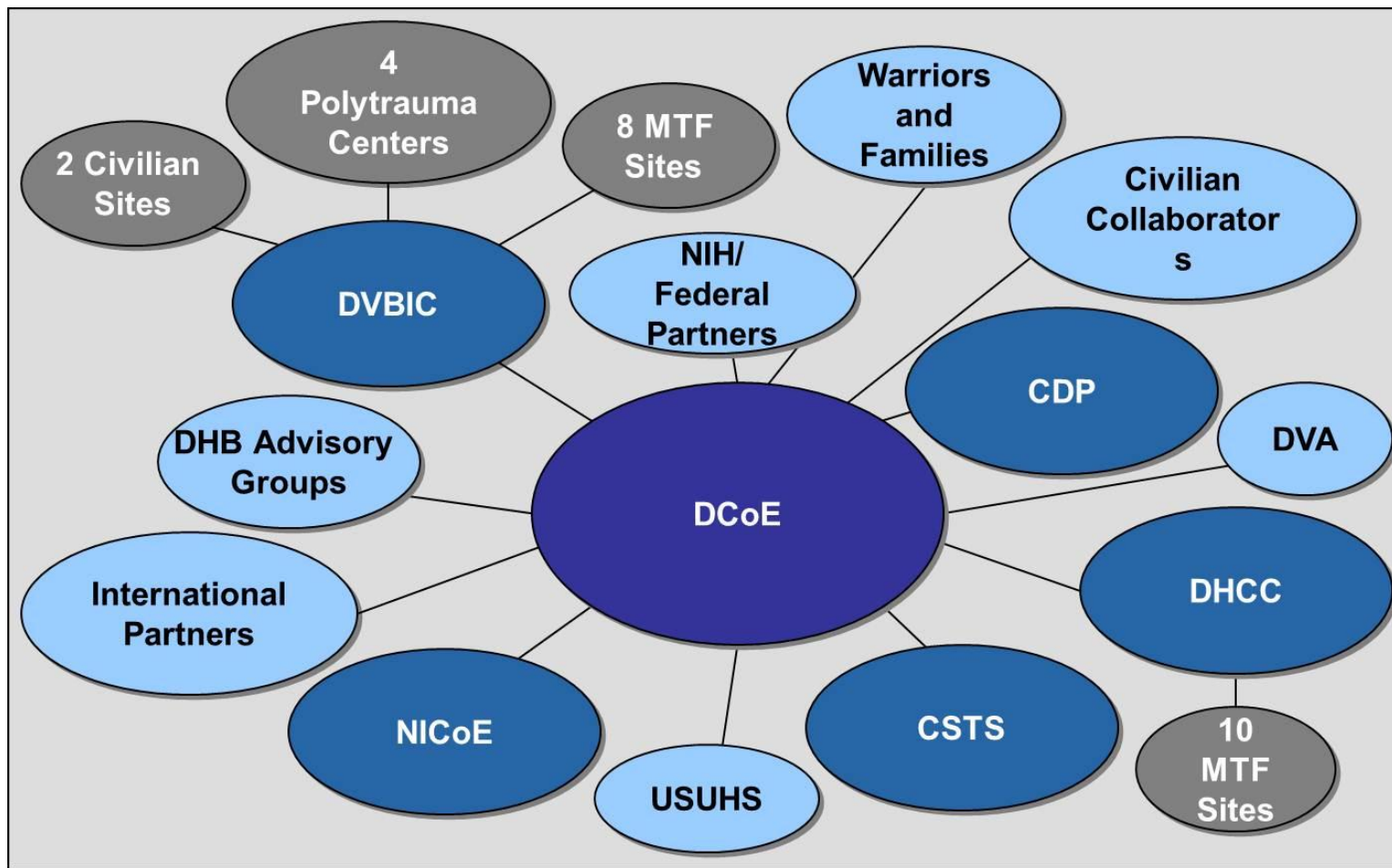
DCoE Vision/Mission



- **Vision:** Keeping the faith with America's Warriors, Families, leaders, and communities
- **Mission:** To maximize opportunities for Warriors and Families to thrive by leading a collaborative global network promoting resilience, recovery, and reintegration for PH and TBI.

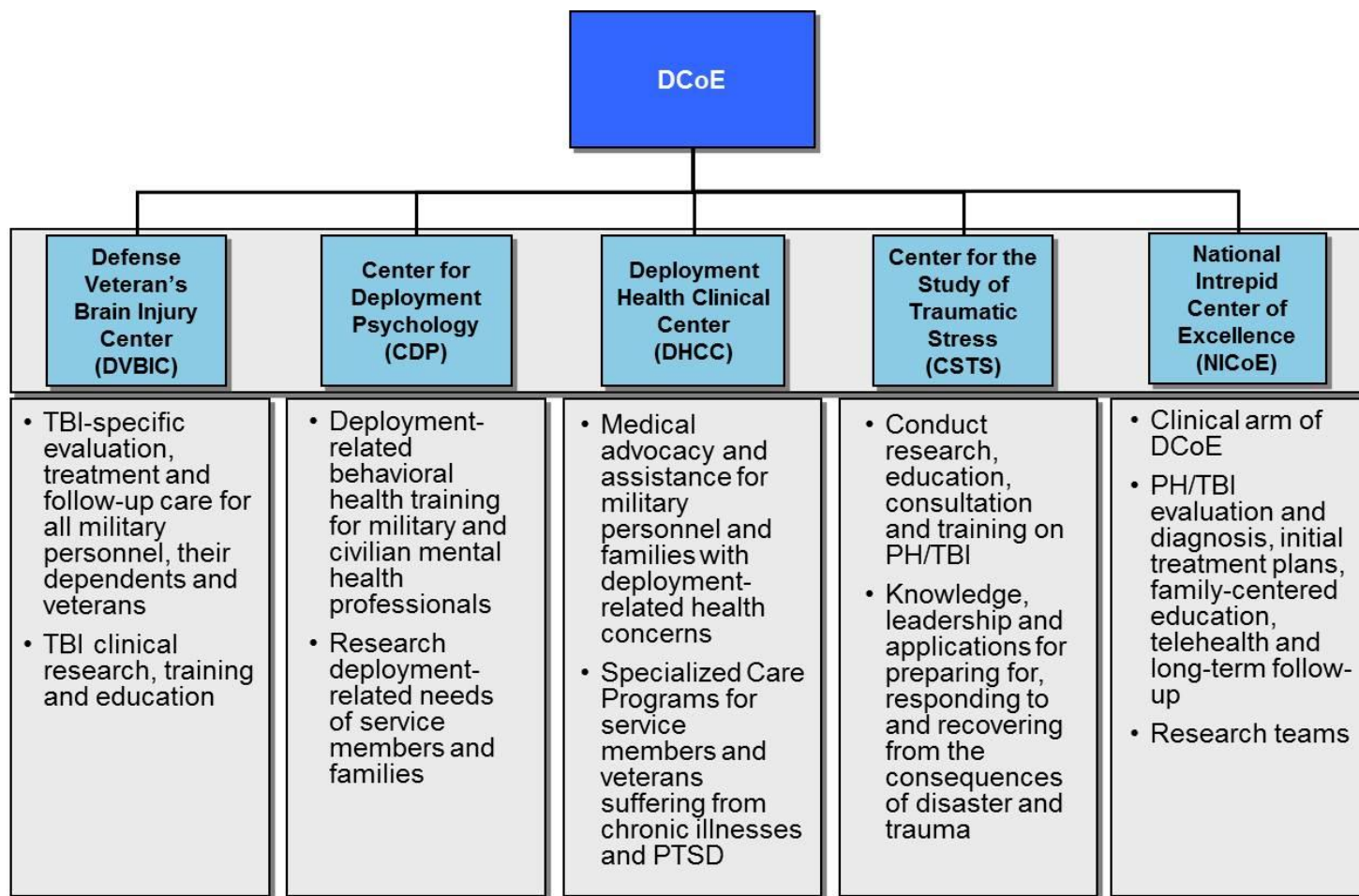


DCoE Global Network



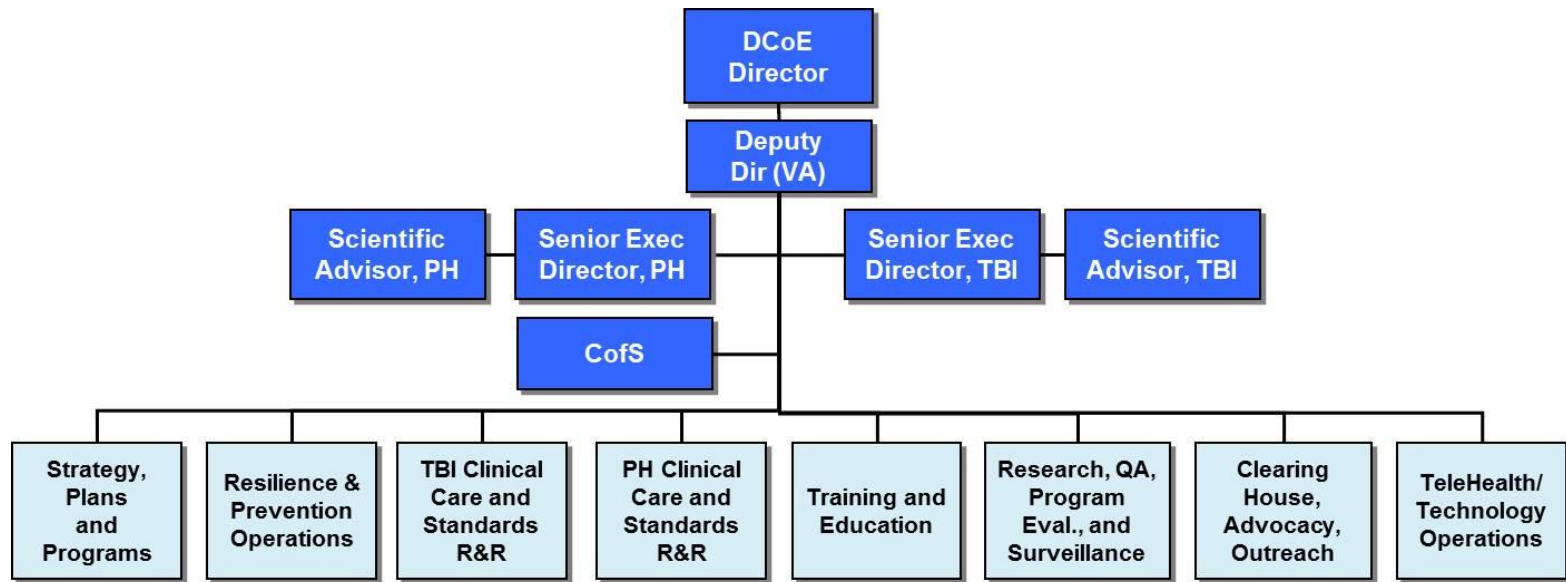


DCoE “Center of Centers”





DCoE Organization

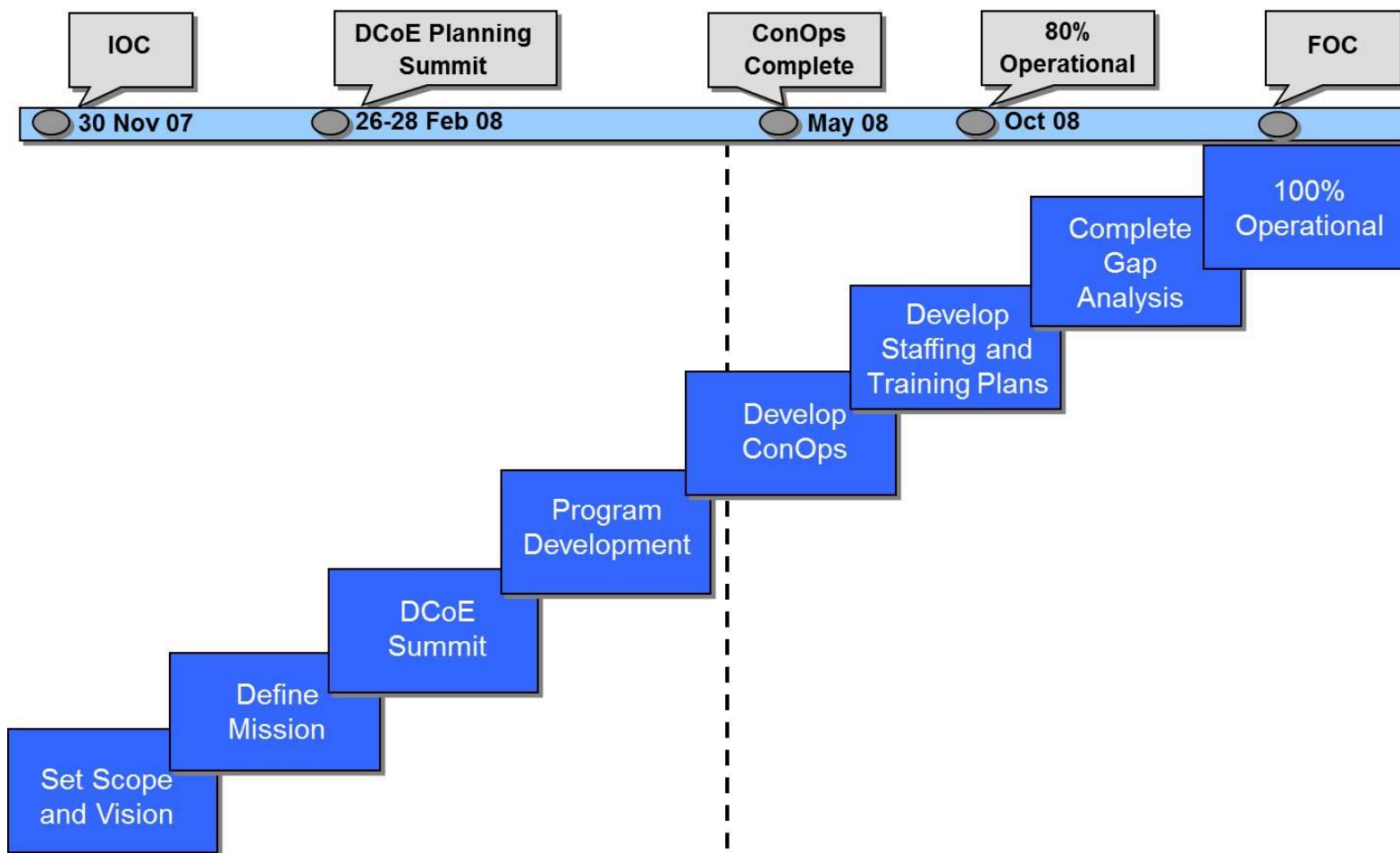


Phase	Date	Operational Capabilities	Staffing
Phase I	Oct 07 – Jul 08	50%	25-30
Phase II	Jul 08 – Oct 09	80%	75-100
Phase III	Oct 09	Fully Functional	TBD

Budget



DCoE Program Development Overview





DCoE in Action



DCoE Highlights: Last 90 Days

- Established DoD/VA PWG on reintegration for Warriors, Veterans and Families
- Coordinated 18 TBI training events
- Briefed UK SG LTG Lillywhite; UK has adopted MACE, furthering global impact of DCoE
- Reviewed 846 research programs; recommended 75 programs for funding
- Developed a 2-week deployment psychology training course; trained 82 primary care providers and 188 PH providers
- Featured in Wall Street Journal article *Pentagon Seeks Battlefield Device to Diagnose Brain Injury*
- Participated in DoD Media Roundtable to discuss the Rand study, *Invisible Wounds of War*



NICoE Overview



History: Various task forces, Presidential, and independent committees proposed over 300 recommendations to address Psychological Health (PH) and Traumatic Brain Injury (TBI) issues in wounded Warriors. Congress provided \$900M to meet requirements for PH/TBI.

Purpose: The NICoE is the clinical arm of the DCoE. It is intended to provide holistic evaluation and diagnosis, initial treatment plans, family-centered education, telehealth and long term follow-up.

Funding: The NICoE will be built and equipped through the generosity of the Intrepid Fallen Heroes Fund and the Fisher family.

Staffing: The NICoE will be staffed by a team of clinicians, subject matter experts, researchers, and support staff all dedicated to the evaluation and diagnosis of PH/TBI conditions.



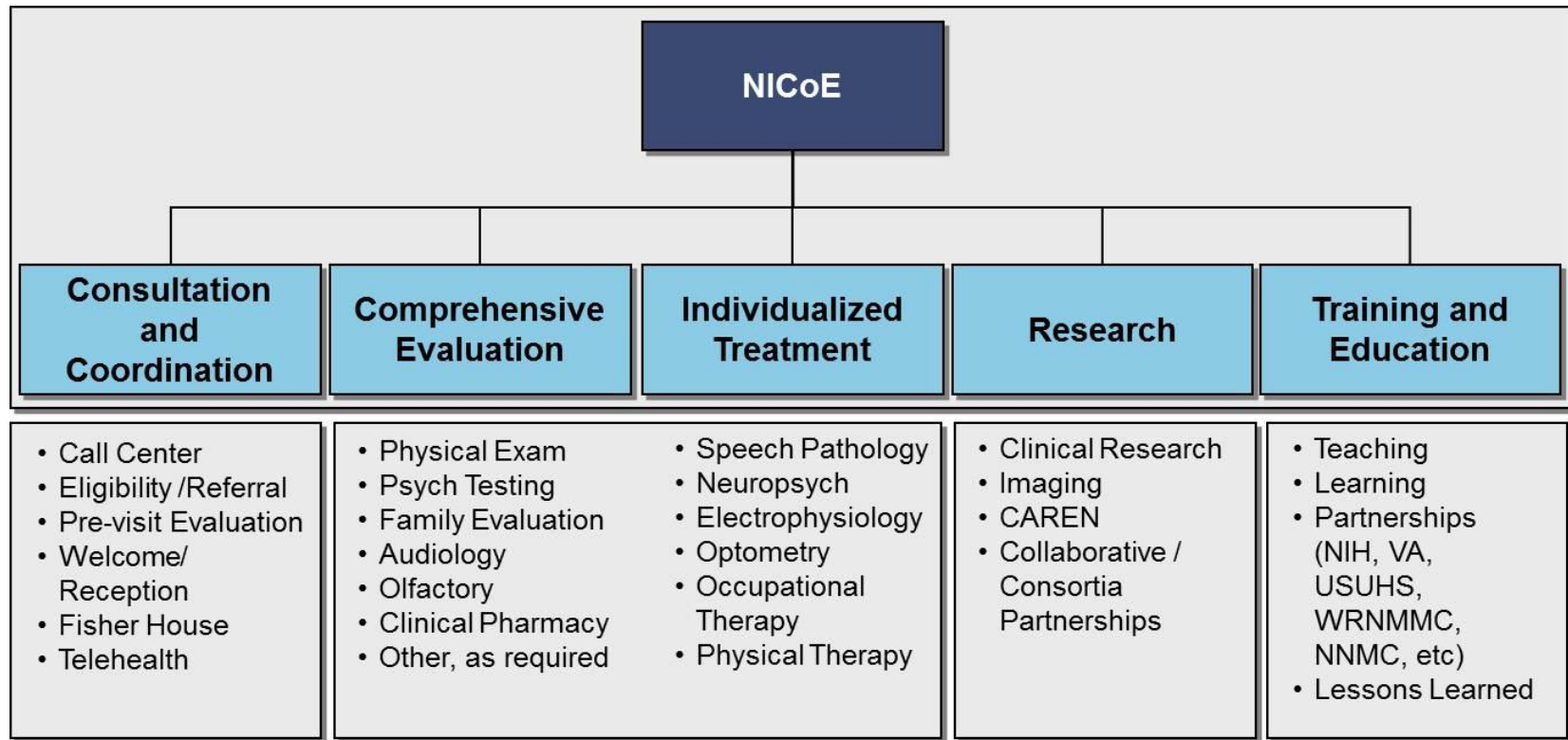
NICoE Vision



The National Intrepid Center of Excellence is a state of the art facility that provides ***intensive outpatient evaluation, advanced diagnostics, initial treatment plans, treatment modalities, and long term follow-up*** for patients suffering from Traumatic Brain Injury and Psychological Health issues. Using cutting edge **evidence-based practice, technology and research tools**, the Center facilitates **maximum recovery** for Warriors and Families and return to **function within their home communities**.



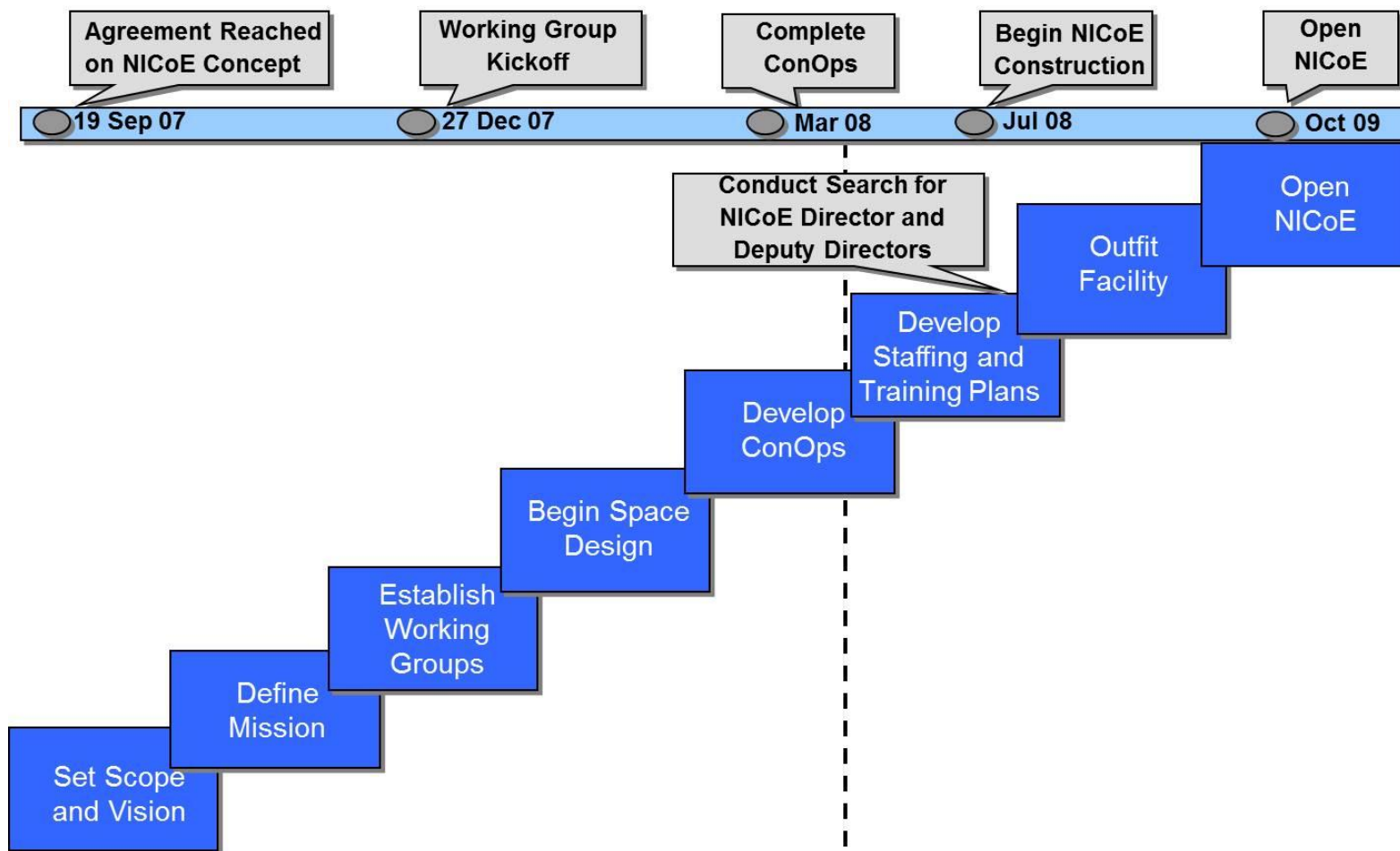
NICoE Functional Organization



FOC	Budget	Staffing
Oct 09		Approx. 88



NICoE Program Development Overview





NICoE Working Group & Process



People

- Family representatives, together with 30 leading clinicians, researchers, and administrators from various agencies, including:

- DoD
- VA
- NIH
- USUHS
- WRAMC
- NNMC
- SmithGroup

**Working
Together
to
Achieve
Results**

Process

- Determine Center specifications (space, equipment, department adjacencies)
- Develop the Concept of Operations including:
 - Consultation and Coordination
 - Comprehensive Evaluation
 - Individualized Treatment
 - Research
 - Training and Education
 - Telehealth/follow-up
- Provide feedback to SmithGroup on space program allocations
- Brief Mr. Fisher and Senior Leadership



NICoE Building Design



Building Characteristics

- Approximately 80,000 Sq Ft
- 2 stories
- Replacing building 12 directly across from the front door of the hospital
- Opens October 09





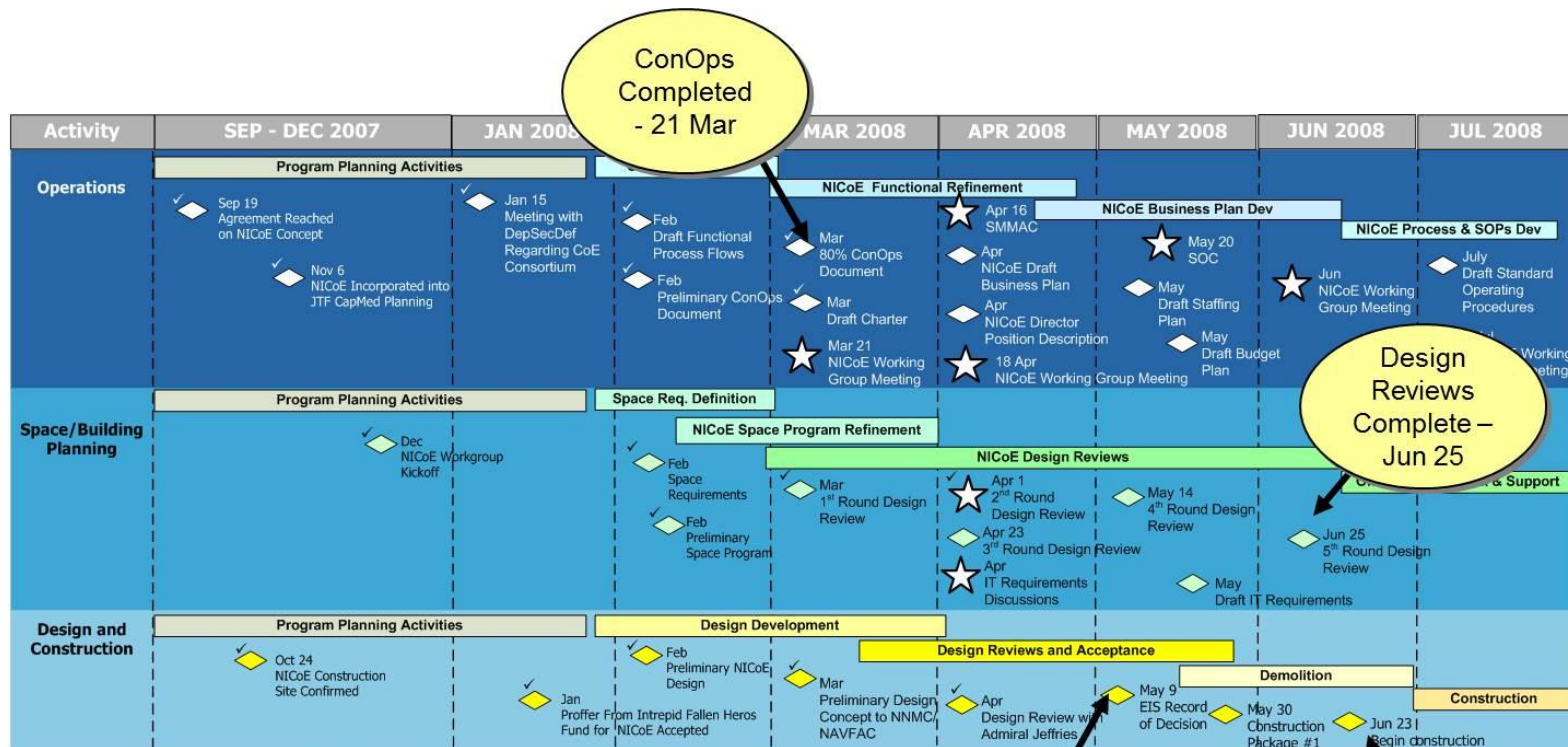
NICoE Fact Sheet



- **Location:** NNMC, Bethesda, MD
- **Lot Size:** Approx. 3 AC
- **Building Size:** 80,000 SF
- **Number of Stories:** 2
- **Number of Personnel:** 88 (estimated)
- **Functions:**
 - Case Management/Telehealth
 - Advanced Neuroimaging
 - Neurology
 - Neuropsychology/Behavioral Health
 - Research
 - Physical Therapy/Occupational Therapy
 - Education and Training
 - Cognitive Therapy
 - Clinical Pharmacy
- **Major Diagnostic / Rehabilitation Equipment:**
 - CAREN (Computer Assisted Rehabilitation Environment) system
 - Positron Emission Tomography with Computed Tomography (PET/CT)
 - Trans-Cranial Doppler Ultrasound
 - Magnetoencephalography (MEG) Scanner
 - Fluoroscopy
- **Evaluation and Treatment Facilities:**
 - Occupational Therapy Gym
 - Gait Lab
 - Outdoor Rehabilitation
 - Vocational Rehabilitation
 - Vehicle Simulator
 - Virtual Reality Lab
 - Activities of Daily Living Lab
 - Speech, Hearing, and Sight
- **Patient & Family Amenities:**
 - Family Lounge
 - Café
 - Activity Center
 - Basketball Court
- **Conference Facilities:**
 - Auditorium
 - Media Digital Imaging, Video Editing (DIVE) Room
- **Electrical System:** Approx. 2,500 KVa system with 1,500 KW Emergency Load
- **Credentials:** LEED Silver certified



NICoE Milestones



LEGEND Space/Building Planning Milestone Design/Construction Milestone Operations Milestone Decision Point

ConOps Completed - 21 Mar

Design Reviews Complete - Jun 25

Site prep begins - May 10

Construction Begins - Jun 23



DCoE/NICoE Program Summary and Discussion



DCoE Summary

- On track to be 80% operational by Oct 08
- Clear understanding of:
 - ✓ How the DCoE program operates
 - ✓ Staffing Requirements
 - ✓ Concept of Operations
 - ✓ Budget

NICoE Summary

- On track to deliver a first-class capability
- Clear understanding of:
 - ✓ NICoE Mission support of PH/TBI Initiatives
 - ✓ The facilities and equipment needed
 - ✓ How the NICoE program will operate
 - ✓ How NICoE will be staffed



Way Ahead



National Intrepid Center of Excellence
Funded by the Intrepid Fallen Heroes Fund, whose patriotic generosity made possible the Center for the Intrepid

REAL WARRIORS.

REAL BATTLES.

REAL STRENGTH.

National Intrepid
Center of Excellence

Resilience. Recovery. Reintegration.